

Installation manual

Content

Chapter 1 Product Description.....	1
1.1 Product Overview.....	1
1.2 Product main function.....	1
Chapter 2 Unpacking check and cable connections.....	3
2.1 Unpacking check.....	3
2.1.1 When you receive the products.....	3
2.1.2 About the front panel, back panel.....	3
2.2 Hard disk installation.....	3
2.3 DVR front schematic.....	4
2.4 DVR Interface Schematic.....	4
2.4.1 DVR Schematic.....	4
2.4.2 POE NVR Schematic.....	5
2.5 Audio and video input and output connections.....	5
2.5.1 Connect the video input.....	5
2.5.2 Select and connect the video output device.....	6
2.5.3 Input audio signal.....	6
2.5.4 Audio output.....	6
2.6 PTZ decoder connected.....	6
2.7 Note that the front-end equipment grounding.....	6
2.8 Alarm、RS485interface.....	6
2.8.1 Alarm Input Port Description.....	6
2.8.2 Alarm Output Port Description.....	7
2.8.3 Dome Connect.....	7
2.8.4 Relay alarm output terminal parameters.....	7
Chapter 3 Basic Operation.....	8
3.1 Boot.....	8
3.2 Preview.....	8
3.3 Power off.....	8
3.4 Login in.....	8
3.6 Desktop shortcut menu.....	9
Chapter IV Main Menu.....	10
4.1 System Settings.....	11
4.1.1 Network Settings.....	11
4.1.2 Video settings.....	12
4.1.3 General Settings.....	13
4.1.4 PTZ settings.....	14
4.1.5 Encoding settings.....	14
4.1.6 Hard disk.....	16
4.2 Playback.....	16
4.3 Remote Device.....	18
4.3.1 Device.....	18
4.3.2 Wifi-setting.....	20
4.4 File Backup.....	21

4.5 PTZ control.....	22
4.6 Advanced Options.....	24
4.6.1 System Upgrade.....	24
4.6.2 Output regulation.....	24
4.6.3 Restore Default.....	25
4.6.4 Local Display.....	27
4.6.5 User Management.....	28
4.6.6 Version Information.....	29
4.7 Alarm.....	30
4.7.1 I / O output alarm.....	30
4.7.2 Motion detection.....	31
4.7.3 Video loss alarm.....	32
4.7.4 Exception Handling.....	33
Chapter V DVR Management Software User Manual.....	35
5.1 Installation.....	35
5.2 Settings, log on locally Management Software.....	35
5.3 Settings, log on remote management software.....	38
5.4 DVR manage software function key introduction.....	42
5.5 Brief introduction of[tools].....	43
5.5.1 Local video playback.....	43
5.5.2 Video control.....	43
5.5.3 Alarming control.....	44
5.6 parameters setting.....	44
5.6.1 Normal setting.....	44
5.6.2 Record setting.....	45
5.6.3 Encode setting.....	45
5.6.4 PTZ Setting.....	46
5.6.5 Network setting.....	47
5.6.6 Alarm setting.....	47
5.6.7 Video Detection.....	48
5.6.8 user management.....	49
Chapter VI App on the phone.....	50
Chapter VII FAQ and maintenance.....	55
7.1 Frequently Asked Questions.....	55
7.2 maintenance.....	58
Appendix 1 Mouse.....	59
Appendix 2 hard disk capacity calculation.....	59

Chapter 1 Product Description

1.1 Product Overview

This equipment of designed for the field of security design of an excellent digit surveillance product. It uses an embedded LINUX operating system to make the system more stable. Used the standard H.264MP video compression algorithms and an unique spatial and temporal filtering algorithm, synchronized audio and video surveillance of high quality and low bit rate; using TCP/IP network technology, with a strong network of data transmission and remote control ability.

The device can local independent work also can be networked to form a powerful network security monitoring, with the professional network video surveillance platform software, which fully reflect its strong networking and remote monitoring capabilities.

This equipment can be used in the field of banking, telecommunications, power, justice, transport, intelligent community, factory, warehouse, resources, water conservancy, facilities and other security department.

1.2 Product main function

Intelligent operation

- ✧ Touch control
- ✧ Mouse operation
- ✧ For the same set menu can be a quick copy-paste operations
- ✧ Real-time monitoring
- ✧ Mobile DVR receiver status information
- ✧ Receive the DVR status info. With mobile phone
- ✧ Make it true to real-time monitor with LCD screen
- ✧ With CVBS output interface and HDMI interface

Storage function

- ✧ Hard disk work management uses the non-working disk hibernation process, heat dissipation and lower power consumption and extend drive life.
- ✧ Store data in a proprietary format, and can not be tampered with data to ensure data security.

Compression Mode

- ✧ Each audio and video signals in real time by an independent hardware compression. voice and image remain stable synchronization.

Backup function

- ✧ Connect the computer through USB interface, get the data and backup directly
- ✧ Backup through USB interface (such as USB flash drive and HD)
- ✧ The client computer through the network to download the files on your hard disk for backup.

Video playback

- ✧ Each can be realized not only the whole of the independent real-time video can be simultaneously retrieve, upside download, etc.
- ✧ Multiple playback mode, multi-Channel Playback, any combination of channels.

Network operating functions

- ✧ Through the network (including mobile phones) for remote real-time monitoring.
- ✧ Remote PTZ control
- ✧ Remote video query and Real-time playback
- ✧ Clients to configure the device parameters
- ✧ Real-time video recording and playback through client

Alarm linkage function

- ✧ Alarm linkage recording, round of the Tour, the screen prompts, beep
- ✧ Relay switch alarm output ,easy to alarm and control lighting
- ✧ Alarm input and alarm output interfaces are protective circuit to ensure that the main equipment from damage

Communication interface

- ✧ With RS485 interface, alarm input, PTZ control
- ✧ With a standard Ethernet interface, and network remote access capabilities

Chapter 2 Unpacking check and cable connections

2.1 Unpacking check

2.1.1 When you receive the products

First of all, Please check the device packaging for any visible. Product packaging selection of protective materials to meet most of the impact of an accident in the course of transportation;

Then, take out the device, remove the plastic protective film of hard disk recorders, check to see if there is a clear sign of injury

2.1.2 About the front panel, back panel

As to the key features of the front panel and a variety of interfaces on the back panel, you can find the detailed instructions in the user manual;

Please carefully check whether the product model on the front panel consistent with what you ordered;

Label affixed to the back panel, on the work of our service is of extremely great significance, please protect. Contact our company's after-sales service, you need provide the model and serial number of products ordered.

2.2 Hard disk installation



picture 2.1

Step1: The hard drive in the hard drive cover with screws;

Step2: Connect the drive power and data lines;

Step3: Close the hard-cover;

2.3 DVR front schematic



picture 2.2

1	Recording Start / Stop	2	Playback stop button	3	Playback play button	4	Playback Pause
5	Put the key back to slow down	6	Playback quick release button	7	Single, multi-window switch button	8	PTZ shortcuts
9	Screen to open the key	10	Exit/Screen calibration key	11	UP ARROW	12	To the left
13	Menu key、Enter key	14	RIGHT	15	Down key	16	MIC、Audio Input
17	HDD LED	18	Power Indicator	19	Power button		

2.4 DVR Interface Schematic

2.4.1 DVR Schematic



picture 2.3

1	12VDC Interface	2	IO Alarm Input, Alarm output and RS485 interface	3	2 USB interface	4	HDMI Interface
5	Preparing VGA or 4-way video extension interface	6	Network Interface	7	4 channel analog video input interface		

2.4.2 POE NVR Schematic



picture 2.4

1	12VDC	2	IO Alarm Input Output and RS485 interface	3	2 USB interface	4	HDMI Interface
5	Preparing VGA	6	RJ-45 Network	7	RJ-45:4 route POE Network input	8	48V/DC interface Network Camera Power

Note: Please check 12V/DC and 48V/DC power before turning on the terminal.

2.5 Audio and video input and output connections

2.5.1 Connect the video input

DVR video input port is BNC, the input signal requirements: PAL / NTSC BNC (1.0VP-P, 75Ω).

Video signal should be consistent with national standards, a higher signal to noise ratio, low distortion, low noise; Image requires clear, invisible change, natural color, and appropriate brightness.

(1) Make sure the signals of camera is steady and reliable

✧ Camera should be installed in a suitable location, avoiding backlighting, low light environment, or use good effect of backlighting compensation cameras, low light camera.

✧ Camera power supply and DVR share GND, Stable and reliable, to ensure camera work normally.

(2) Ensure the stability and reliability of the transmission line:

✧ High quality, good video shielded coaxial, And based on the transmission distance to choose the right model. Should based on the specific circumstances of the use of twisted-pair transmission, add video compensation equipment, optical transmission and other ways to ensure signal quality if the distance is too long

✧ Video signal lines should avoid strong electromagnetic interference to other equipment and lines, In particular should avoid high-voltage current into a string.

(3) Ensure good contact lugs

Signal and shield lines should be firm, well-connected, avoid Weld, lap welding, to avoid oxidation.

2.5.2 Select and connect the video output device

Video output is divided into PAL/NTSC BNC(1.0V_{P-P} , 75Ω)Output, HDMI output and LCD screen output.Choose to use alternative monitor computer monitor should pay attention to the following questions:

- ✧ Not long remain switched on, in order to extend the life of equipment.
- ✧ Regular degaussing, which will help maintain the normal operation of the display.
- ✧ Away from strong electromagnetic interference devices.

Use the TV as a video output device is an alternative to unreliable.It also requires time and minimizing the use of strict control of power, the interference caused by neighboring devices.Inferior TV leakage risks may cause damage to other equipment.

2.5.3 Input audio signal

DVR contains a MIC, audio information can be used directly as an input device.

2.5.4 Audio output

DVR built-in 2W speakers, can be directly used as the output device. Measures in the built-in speakers produce output howling phenomenon to be taken:

- (1) DVR output volume adjustment, making less than the threshold generated whistle..
- (2) Multi-use environment using sound-absorbing materials decoration, reduce reflected sound to improve the acoustic environment.

2.6 PTZ decoder connected

(1) PTZ decoder must be done with DVR common ground, otherwise there may be a common-mode voltage will cause uncontrollable head.

- (2) Recommend the use of shielded twisted pair, which were connected to the shield.
- (3) Prevent high voltage in series, rational layout, good lightning protection measures.
- (4) Need to incorporate remote 120 ohm resistor to reduce reflection and ensure signal quality.
- (5) The 485 AB line of DVR could not be connected with others.
- (6) A B line voltage between the decoder requires less than 5V.

2.7 Note that the front-end equipment grounding

Remark:Note that the front-end equipment grounding, Poor grounding may cause the chip burn.

2.8 Alarm、RS485interface

The machine's alarm output interface is normally open or normally closed.

2.8.1 Alarm Input Port Description

- (1) 2 channel alarm input, there is no limitation of input (Can be normally open or normally closed.
- (2) Alarm detector ground terminal (GND) terminal in parallel with the com (Alarm detector by an external power supply) .
- (3) Ground terminal and the ground terminal DVR alarm detector and then.
- (4) NC end of the alarm detector alarm input of the DVR (ALARM) .

When using an external power supply for the alarm equipment needed common ground with DVR.

2.8.2 Alarm Output Port Description

(1) 1 channel alarm output switch (Normally open contact) , External power supply is required alarm equipment.

(2) To avoid overload and damage the host, refer to relay the connection parameters, see table parameters associated relays.

2.8.3 Dome Connect

(1) Connect the 485 line of dome camera with 485interface of DVR.

(2) Connect the video line of dome camera with the video input of DVR.

(3) Get the dome camera energized.

2.8.4 Relay alarm output terminal parameters

type:JRC-27F		
Contact Material	Silver	
Ratings (Resistive load)	Rated switching capacity	30VDC 2A, 125VAC 1A
	Maximum switching power	125VA 160W
	Maximum switching voltage	250VAC, 220VDC
	Maximum switching current	1A
Insulation	Contacts with the Inter-polar	1000VAC 1min
	Contacts between different polarity	1000VAC 1min
	Between coil and contacts	1000VAC 1min
Surge voltage	Contacts with the Inter-polar	1500VAC (10×160us)
Opening time	3ms max	
Turn-off time	3ms max	
Life	Machinery	50×10 ⁶ MIN (3Hz)
	Electric	200×10 ³ MIN (0.5Hz)
Temperature	-40~+70℃	





Chapter 3 Basic Operation

3.1 Boot

External power supply: Connect the power, boot the DVR. Will hear the buzzer "beep" twice after boot, the default video output mode for the multi-screen output. If the start-up time in the recording setting time, the system will automatically start the timer recording function, corresponding channel recording indicator light, then system work. (In the soft-switching mode off DVR, press the POWER button 2 seconds to start DVR.)

3.2 Preview

After the device normal login directly into the preview screen. Double-click the left mouse button on the screen, you can enter the selection screen. Preview superimposed current date and time, and displays the name and status of each channel, Meaning channel status icons as followed:

1		This symbol is displayed when the video channel on the channel screen	2		Channel video loss occurs, the channel screen display this flag
3		Motion detection occurs when the flag is displayed on the channel screen	4		When an IO alarm occurs, this flag on the channel screen display

3.3 Power off

Turn off the device, there are four ways:

(1) Hold down the left mouse button, move the mouse from the top down or from the bottom up some distance from the continuous slide release the left mouse button, Pop [Exit the System], choose [Shut down the system] then power off, choose [reboot the system] then reboot the system, choose [Current registered users] The time required to re-enter the system menu Login Username.

(2) Press and hold on the touch screen with the touch pen or hand a little, from the top down or bottom-up under continuous sliding some distance, Pop [shown down the System] then power off, choose [reboot the system] then reboot the system, choose [Current registered users] The time required to re-enter the system menu Login Username.

(3) Click the button on the front panel POWER, Pop [Exit the system], choose [shut down the system] then power off, choose [reboot the system] then reboot the system, choose [Current registered users] The time required to re-enter the system menu Login Username.

Explanation:

1. Power recovery

The machine in the video working condition, if the non-normal shutdown occurs. After re-starting, the unit will automatically save video information before shutdown and automatically restored to the state before shutdown.

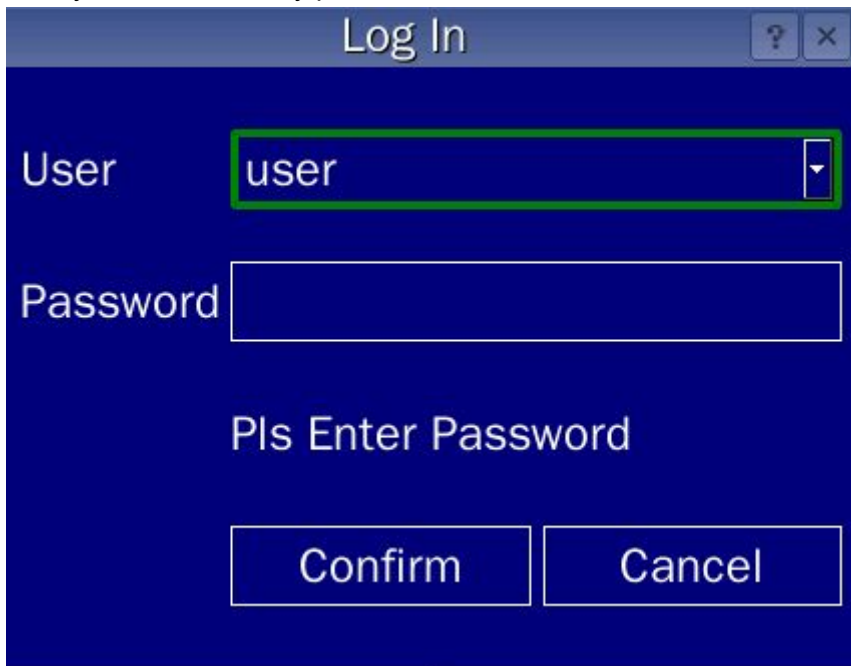
2. Replacing the hard drive

Before replacing the hard drive, you must turn off the power switch on the rear panel.

3.4 Login in

After the normal boot device, before the operation requires login, the system provides the

corresponding functions according to the login user permissions;When the device is shipped with two user presets admin(password:123456)and user(there is no pass word).user is the default login user,Can change the password, you can not modify permissions.



picture 3.1

★Security reasons, the user first logs, please change your password immediately in the "User Management".

3.6 Desktop shortcut menu

Preview mode, there are three ways to pop the desktop shortcut menu.

(1) Right-click the desktop shortcut pop-up menu.

(2) From the right or from right to left after continuous sliding cursor left some distance, the pop-up desktop shortcut menu.



picture 3.2

Shortcut menu includes:Video playback, alarm systems, remote equipment, file backup, ptz control, advanced options and system settings.

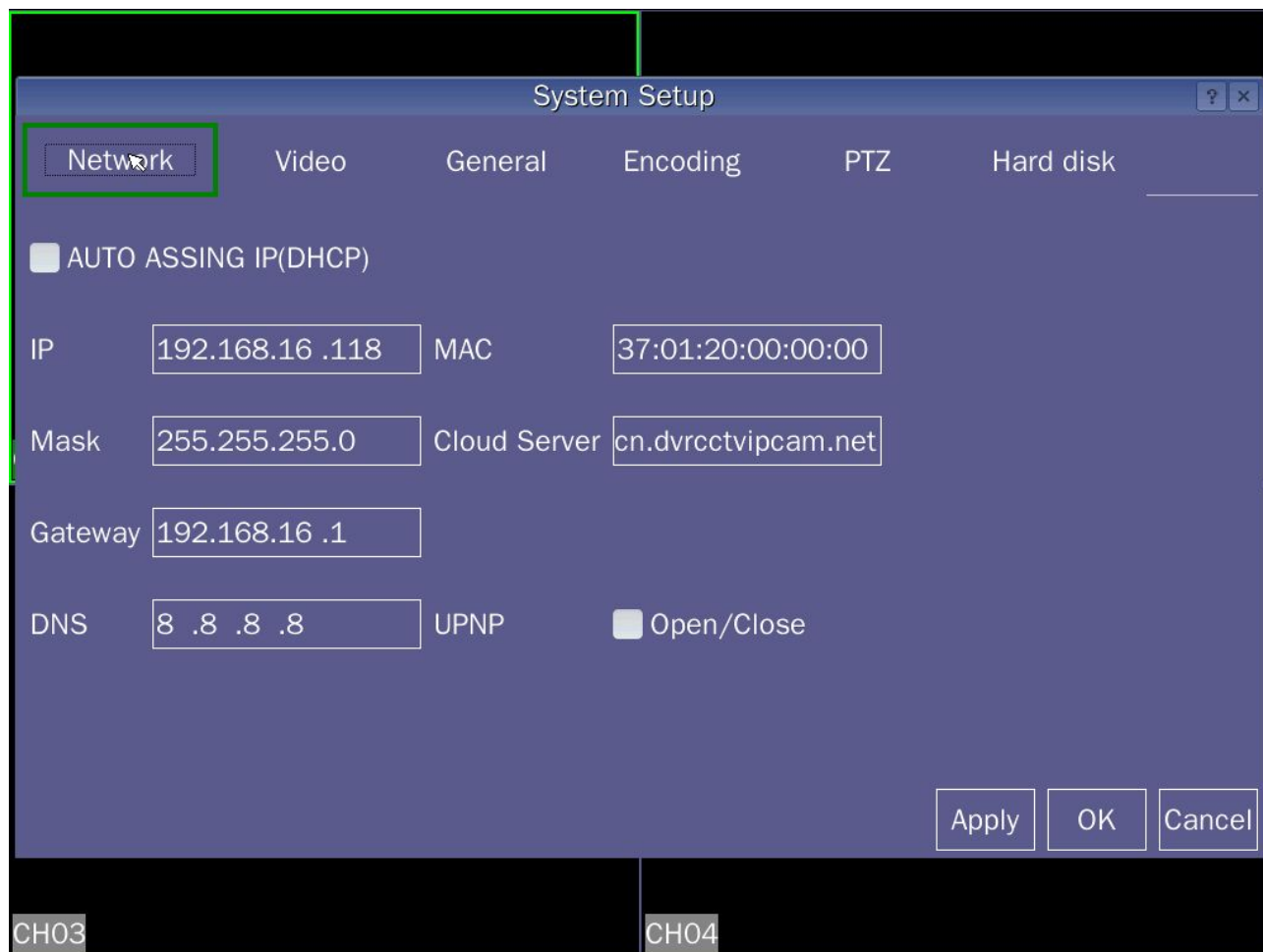
Chapter IV Main Menu

DVR main menu navigation

Main Menu	Sub menu	Features Summary
Playback	Playback	Looking back at the video
Alarm settings	I/O Output alarm	I/O Enable alarm system
	Motion detection alarm	Motion detection alarm
	Video loss alarm	video loss alarm system
	Exception Handling	Abnormal processing system
Remote Device	Remote device management	Management, add network cameras
File Backup	File Backup	File backup and detection of peripheral
Ptz control	Control PTZ	Set the PTZ parameters
Advanced Options	System Upgrade	The system upgrade, scheduled reboot
	Output regulation	Set on display
	Restore Default	Restore Default Settings
	Local Display	Setting of the display screen
	User Management	User names and passwords on the system management
	Version Information	Hardware and software version, serial number
System Settings	Network Settings	Set the network connection parameters
	Video settings	Set on the video channel function
	General Settings	Setting the time, date, machine number
	Encoding settings	Recorded video file attribute set
	PTZ settings	PTZ parameter setting
	Hard disk management	Formatting the hard drive, hard disk status

4.1 System Settings

4.1.1 Network Settings



picture 4.1

[Automatically obtain an IP address] Automatically obtain IP functionality(Not recommended).

Remark:Need to pre-set up a DHCP server.

[IP addresses] Set the IP address, the default IP address: 192.168.1.100.

[Sub net Mask] Sub net mask setting device, the default subnet mask:255.255.255.0.

[Default Gateway] Set the default gateway device, the default default gateway:192.168.1.1.

[DNS Settings] DNS server for the domain name into an IP address,The address is provided by your network provider.After setting the address need to reboot to take effect,default8.8.8.8,May also neednot to change.

[Cloud Servers] Set the device to connect cloud server IP,the default is:cn.dvrctvipcam.net.

[UPNP] After the start in order to connect to the cloud server.

WIFI Function: Built-in WIFI module DVR to normal use,Use WIFI function,No need to connect external cable.

[Open/Close] “√”WIFI function enabled,Such as WIFI connection is successful,Show WIFI connected,Otherwise,WIFI is not connected;

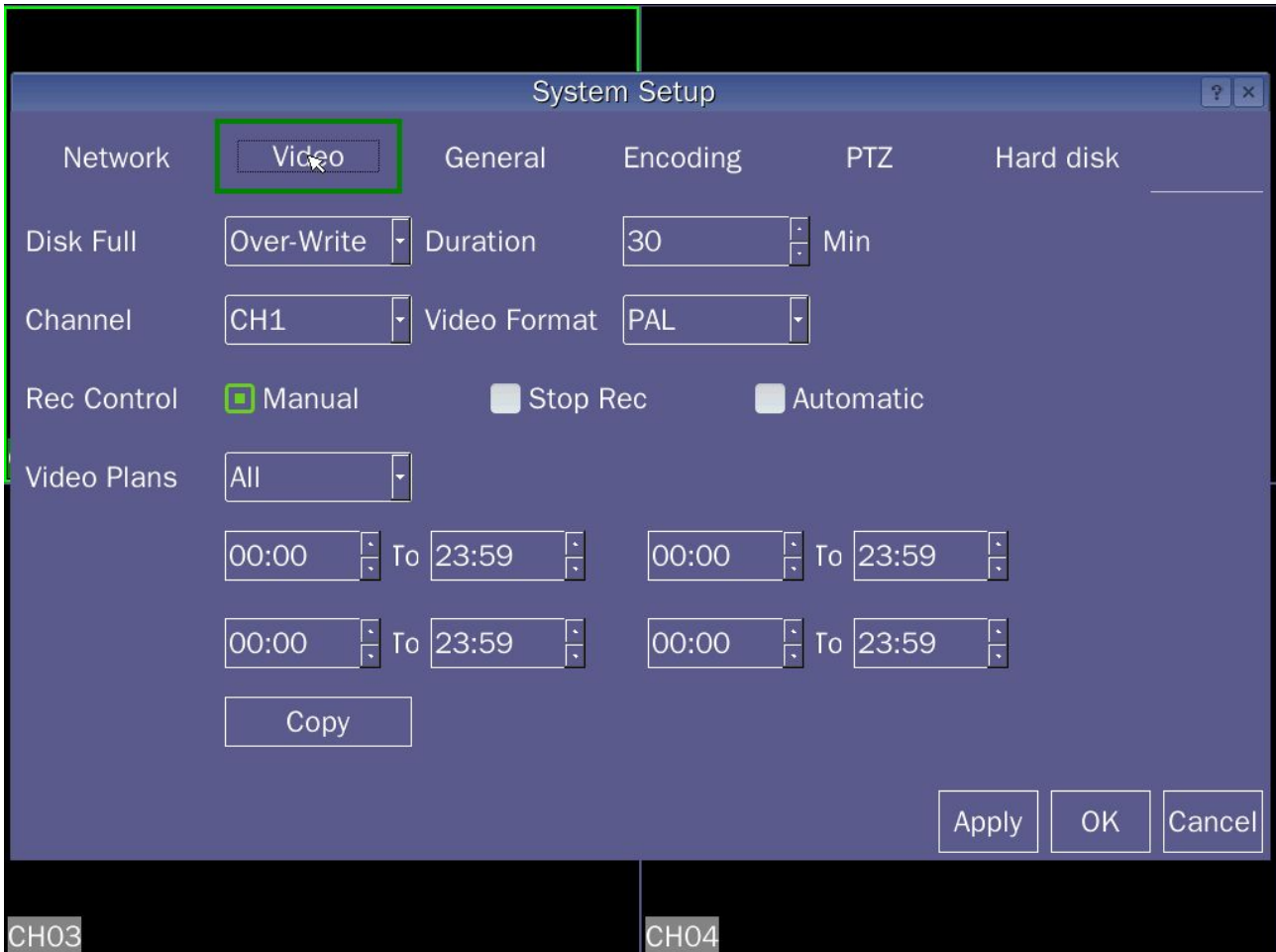
[WIFI mode] Soft AP and Client modes;

Soft AP Mode: Host function as a router, Wireless devices can be connected to the host via WIFI, And access a host of picture;

Client Mode: Host via WIFI function, Connected to a wireless router, Mobile access to the host screen

4.1.2 Video settings

Set the video parameters to monitor channel, At [system setting] > [video setting] Set accordingly.



picture 4.2

[**Hard drive is full**] Can choose to cover and stop video recording type, video is covered or stop when the hard drive is full.

[**Video length**] Set the length of time required for custom video.

[**Channel**] Select the appropriate channel number to set channel.

[**Video System**] To select NTSC, PAL video two kinds of video formats.

[**Video Control**] Setting the video, there are three states: stop recording, automatic and manual:

Stop Recording: No matter the channel in any state, select "Stop Recording" button, the corresponding channel stop recording;

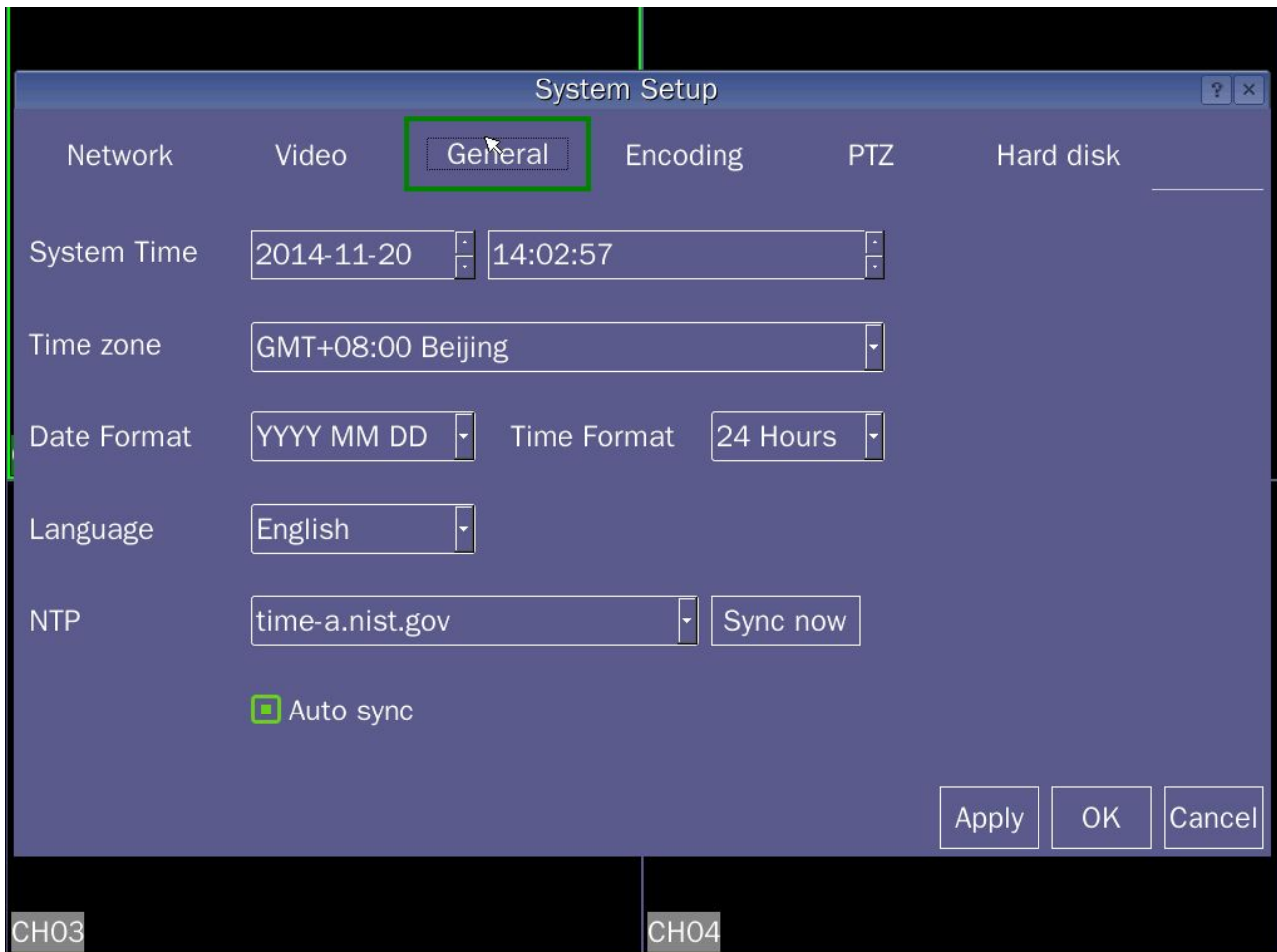
Manual: No matter the channel in any state, select "Manual Recording" button, all the corresponding channel for video;

Auto: No matter the channel in any state, select "Auto Recording" button, the corresponding channel automatic recording.

[**Plan**] To set common video recording time period, within the time frame set will start recording (this operation can only be started in the automatic recording mode).

[Copy] To copy this setup information channel to any other channel.

4.1.3 General Settings



picture 4.3

[**System Time**] Set the DVR system the current system date and time.

[**Time Zone**] Set the time zone for your area based on Greenwich Mean Time (GMT).

[**Date Format**] Select format date display, including:Year Month Day,Month Day Year,Day Month Year.

[**Date separator**] To select the delimiter date format.

[**Time Format**] Select the time format, divided into 24-hour and 12-hour clock.

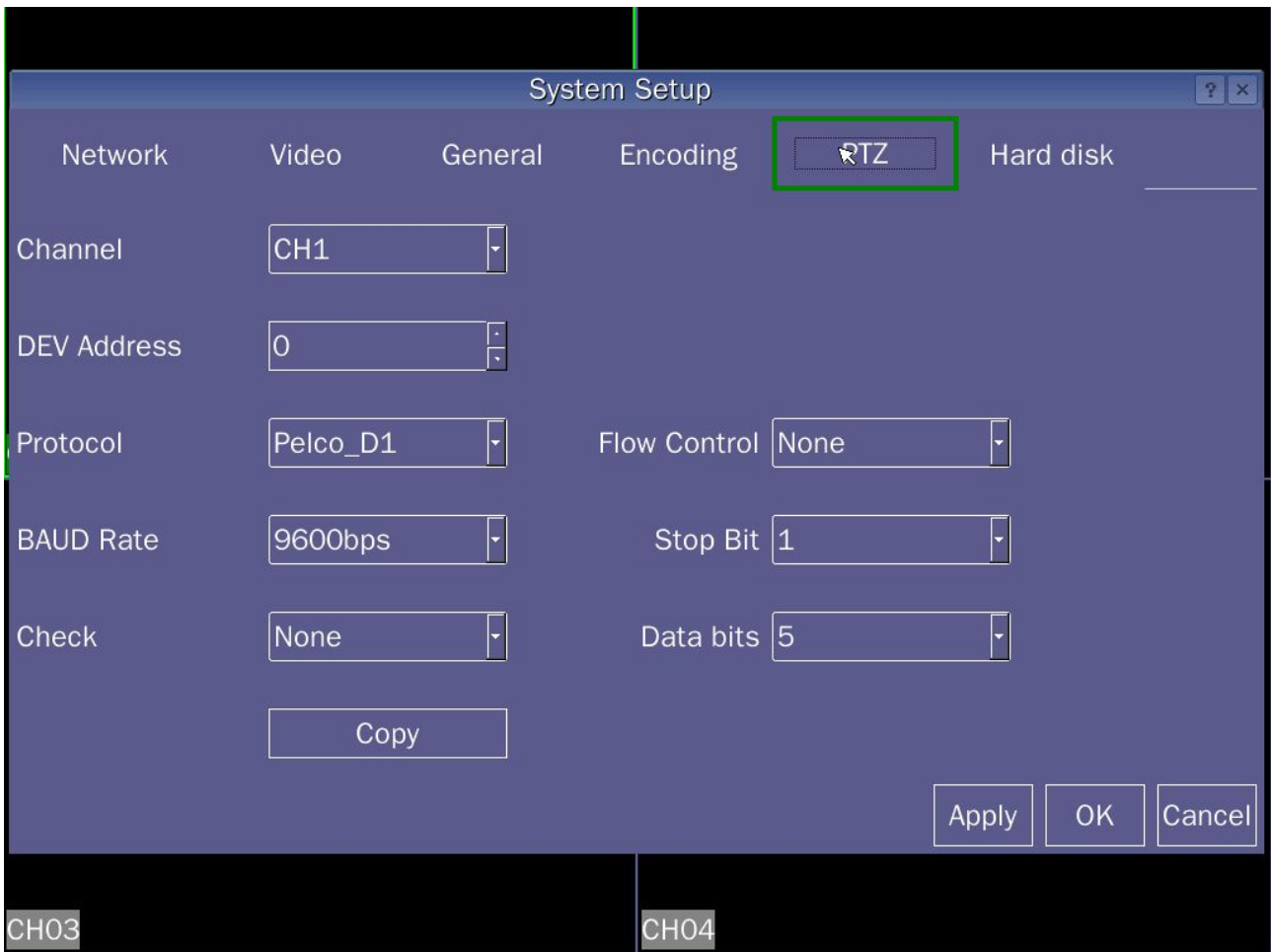
[**Language**] Currently supports two kinds of languages: English, Chinese.

[**DVR ID**] For the machine remote control more than one remote DVR occasions,Only address key is pressed on the remote control and enter the address of the remote DVR and the corresponding number of the machine to the same address for remote operation.

[**U DISK MODE**] Selected disk U disk mode, DVR's hard drive can be turned into a mobile hard disk, you can store files.

[**NTP**] Connect to the network, you can choose a different time server for time synchronization; choose to automatically synchronize with an NTP server.

4.1.4 PTZ settings



picture 4.4

[**Channel**] Choose the dome camera input channel.

[**Address**] Is set to the corresponding dome address, default is 0 (Note: The address must be consistent with the address of the ball machine, or can not control).

[**Agreement**] To select the appropriate ball machine brands and models of protocols (eg: PELCOD).

[**Baud**] Ball machine used to select the appropriate baud rate and PTZ cameras can be controlled corresponding channel, the default is 9600bps.

[**Stop bits**] There are 2 options, the default is 1.

[**Flow Control**] There are hardware flow control, Xon / Xoff, the default is none.

[**Data Bits**] Including 5-8 option, the default is 8.

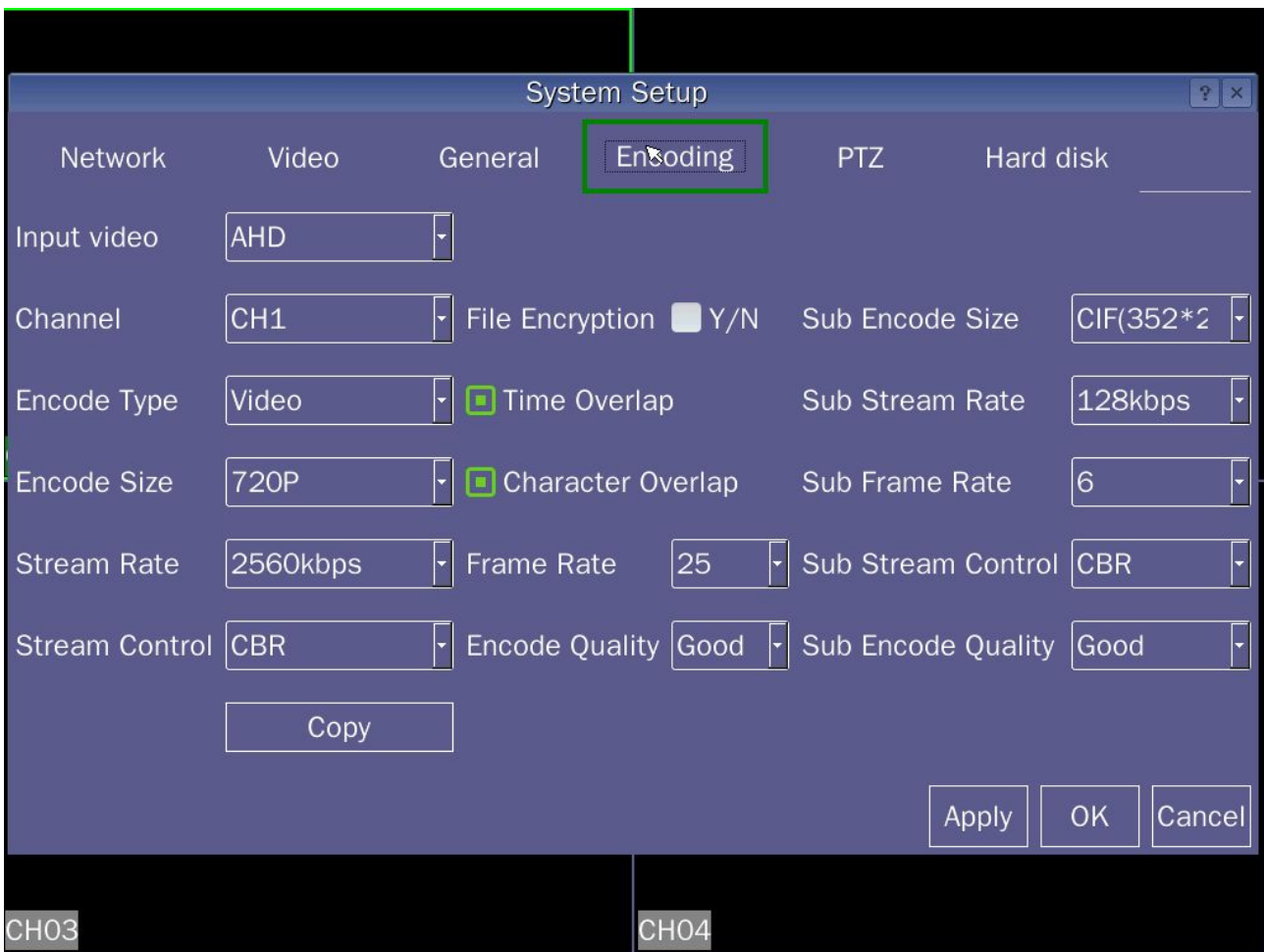
[**Check**] Of odd parity, even parity, signs check, blank check, the default is none.

[**Copy**] To copy the current settings to other information channels to other channels.

4.1.5 Encoding settings

Set the video / audio encoding parameters including video files, remote monitoring and other image parameters. The left part set encoding parameters of each individual channel, Set the right part of the sub-stream parameters, Dual-stream using the stream all the way to the high rate for local HD storage, support D1/HALFD1/CIF coding, All the way to low bit rate stream (CIF encoding) for network transmission, taking into account local storage and remote network transmission., Dual-stream network bottlenecks in the existing balance between image quality and transmission quality, Can break through

the bottleneck of the network, According to the network bandwidth flexibility to choose bit stream format, to local HD storage, while the back-end network transport low stream.



picture 4.5

[**Channel**] Select the channel number .

[**Code Type**] Encoding video and audio two kinds of style.

[**Encoding size**] There are three Optional: CIF, HALF D1 and D1.

[**Stream Control**] Optional flow control limited stream, variable stream. In the variable code stream quality optional 6-speed.

[**Encoding quality**] There are six files available: best, good, good, medium, poor and poor.

[**Rate**] is set to change the value of the quality of the stream quality in facilities allow, the bigger picture, the better the stream.

[**Frame Rate**] Can be adjusted in real time criteria: P system, 25 frames / sec N system, 30.

[**File Encryption**] To select "Yes", DVR backup file during playback to play the need for decryption.

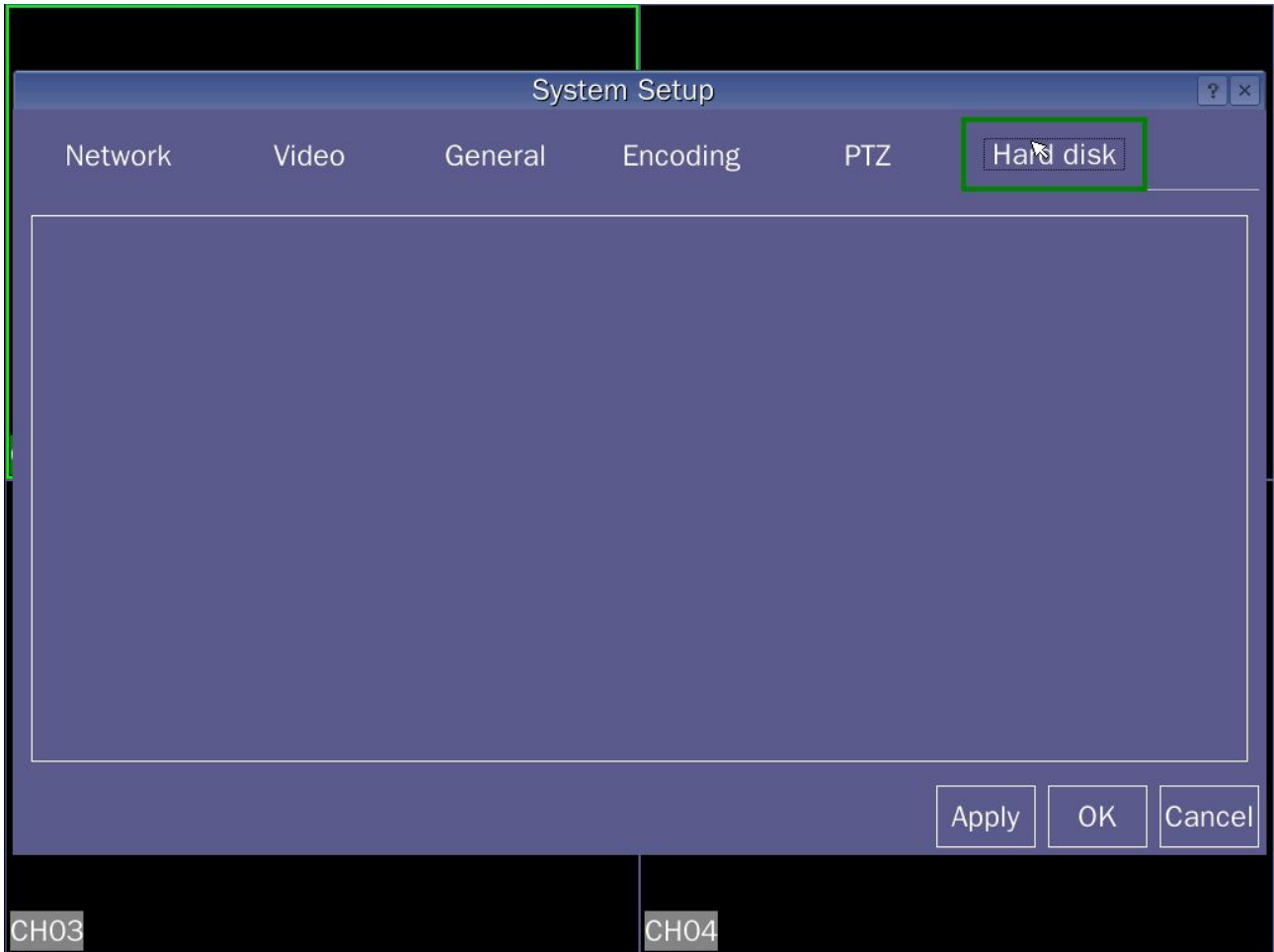
[**Time OSD**] Whether to display the channel name and then select the channel video recording time.

[**Sub-stream information**] Setting sub-stream network transmission sub-stream parameters.

[**Copy**] To copy the current settings to other information channels to other channels.

4.1.6 Hard disk

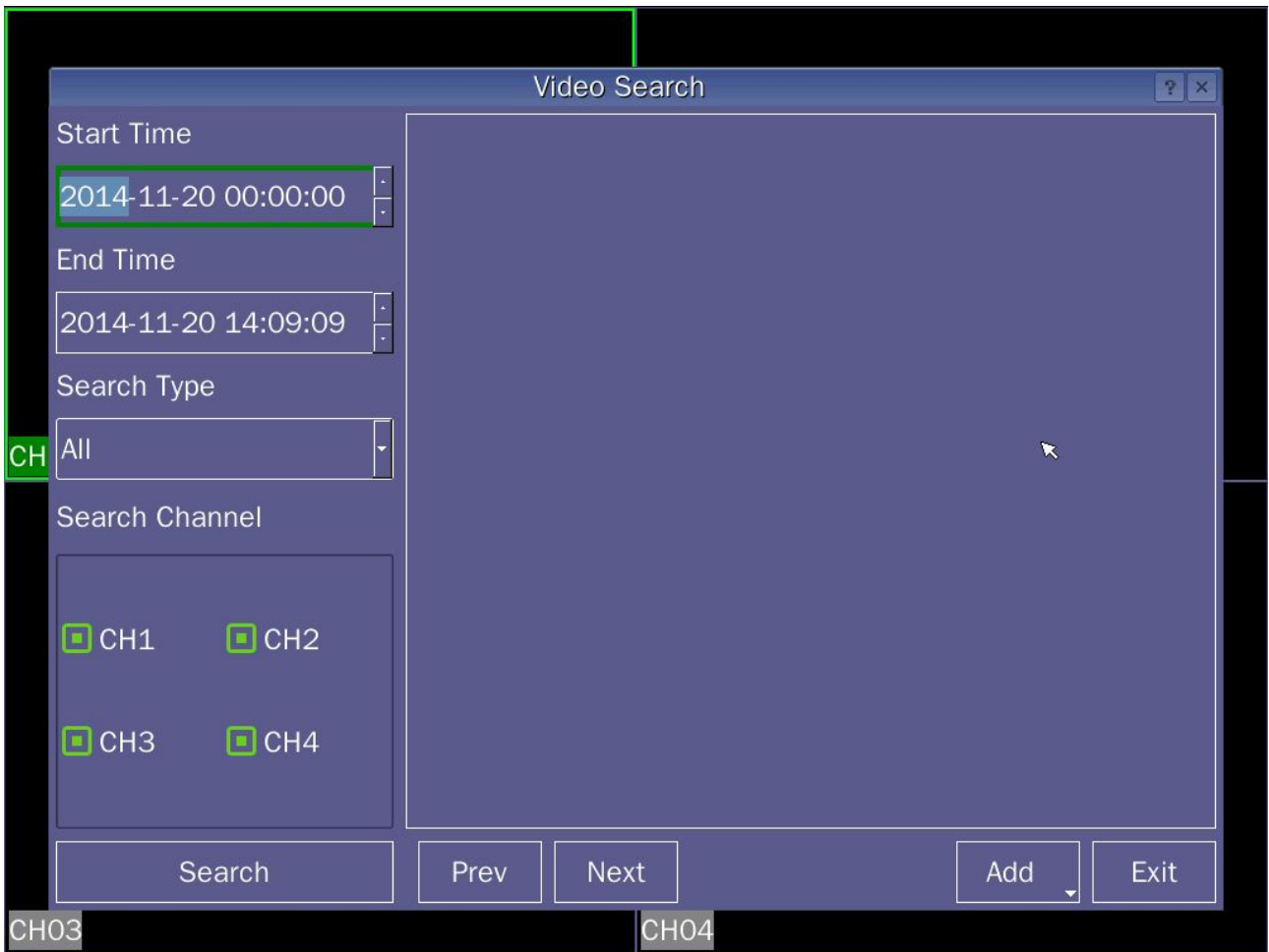
On the device hard disk configuration management. Menu displays the current hard disk information, including the number of access drives for a total capacity available, state operations. The hard disk is formatted, operation, select the hard disk operations, click on the right "Format" button to execute.



picture 4.6

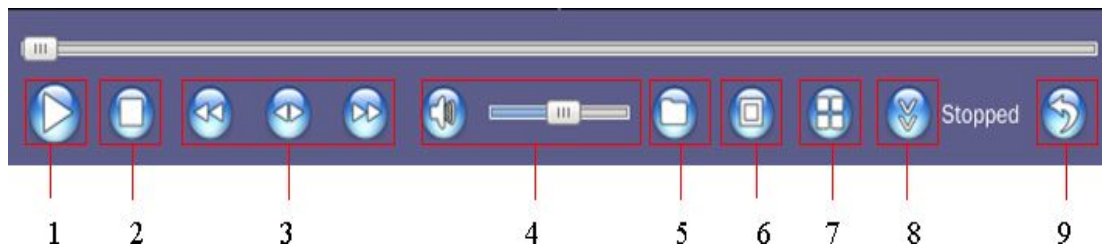
4.2 Playback

Play video files on your hard disk. Select the desired search type, all channels, click on [video] search to retrieve the video file, then select from the retrieved documents needed to click play, four screen video playback can be performed simultaneously (each select a preview screen, and then select a video playback to the corresponding screen video playback).



picture 4.7

[Control Panel]



picture 4.8

1	play key / Pause	2	Stop button	3	slow-release button, normal, fast forward key
4	adjust the volume	5	video files selection key	6	full-screen preview button
7	four screen preview button	8	panel Minimize button	9	Exit

Note:

1. Preview screen video playback simultaneously: First perform file retrieval time period, and then select the channel you want to preview the screen, then click (5) choose to play the video file.

2. After the panel is minimized, video display control panel, there are two methods:

(1) From the left to right or from right to left continuous sliding the cursor a short distance, a pop-up dialog box, select [display control panel].

(2) anywhere on the playback screen click the right mouse button, a pop-up dialog box, select [display control panel].

4.3 Remote Device

4.3.1 Device

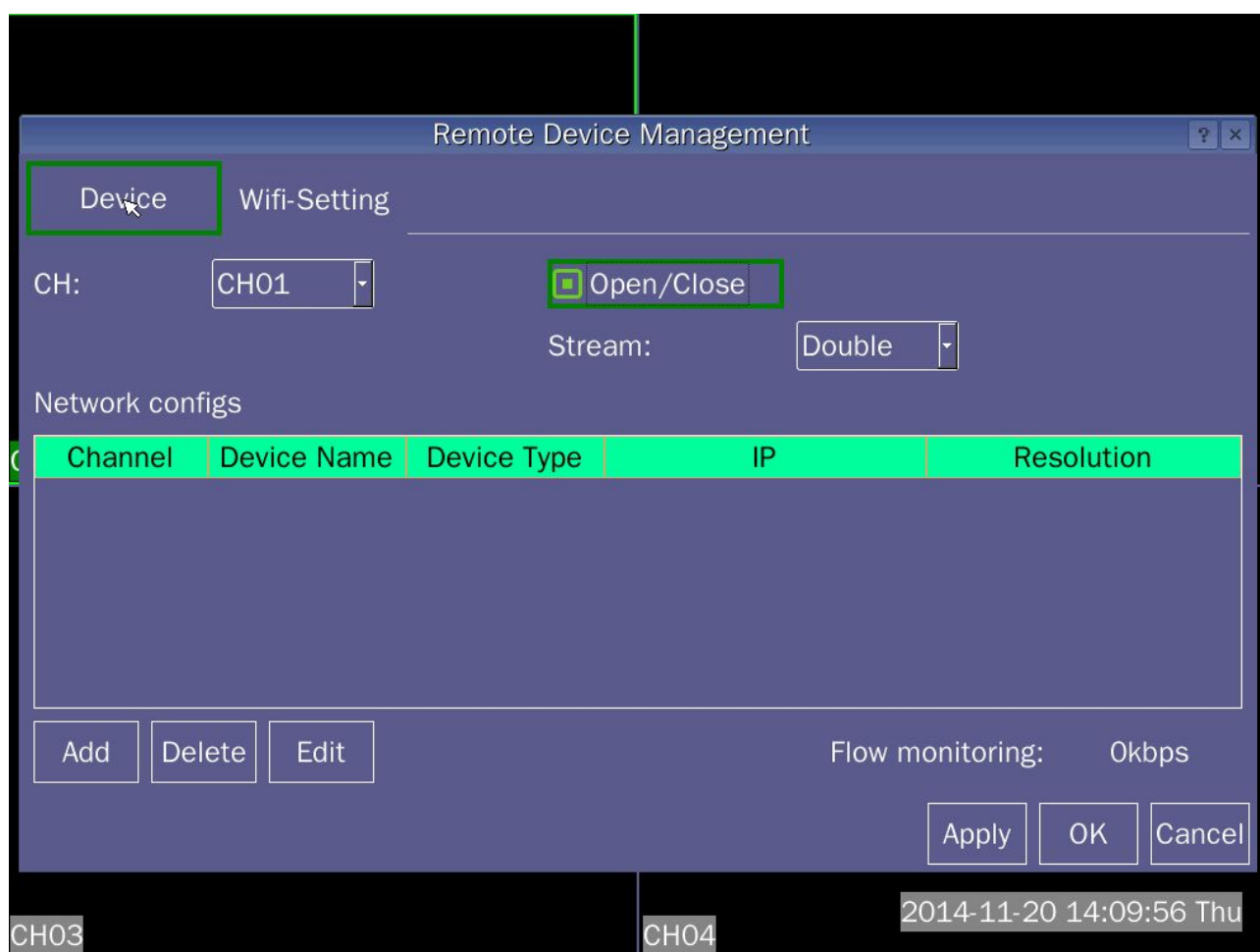


图 4.9

[**Channel**] To select the desired or turn off the digital video channels.

[**Enabled digital video camera**] When checked in the box , set the digital camera connection channel, uncheck the analog cameras connected to the channel.

[**Time synchronization**] When check in the box , make the digital camera time with the host device synchronization.

[**Stream**] after adding a digital camera, video recording host channel code stream

[**Network Configuration List**] displays a list of digital cameras has been added, after checking the appropriate digital camera in the list and applications, digital cameras will be displayed in the corresponding channel.

[**Add**] click Add, enter the digital camera's search interface, as shown in picture 4.7

- [**Delete**] to delete the Network Configuration list, select a digital camera.
- [**Application**] to save the current settings page.
- [**OK**] to save the current page settings and exit the current page;
- [**Cancel**] to exit the menu interface.

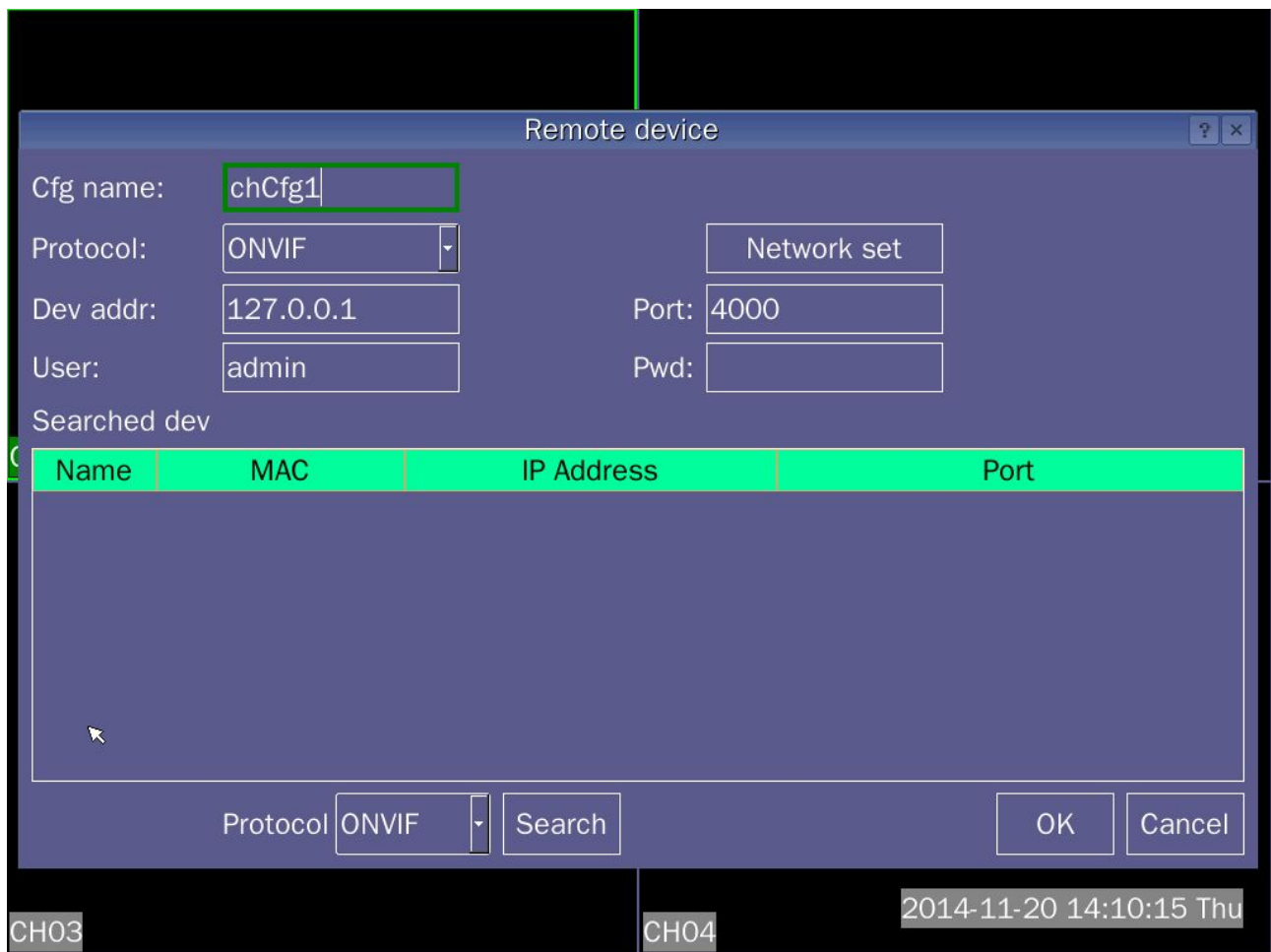
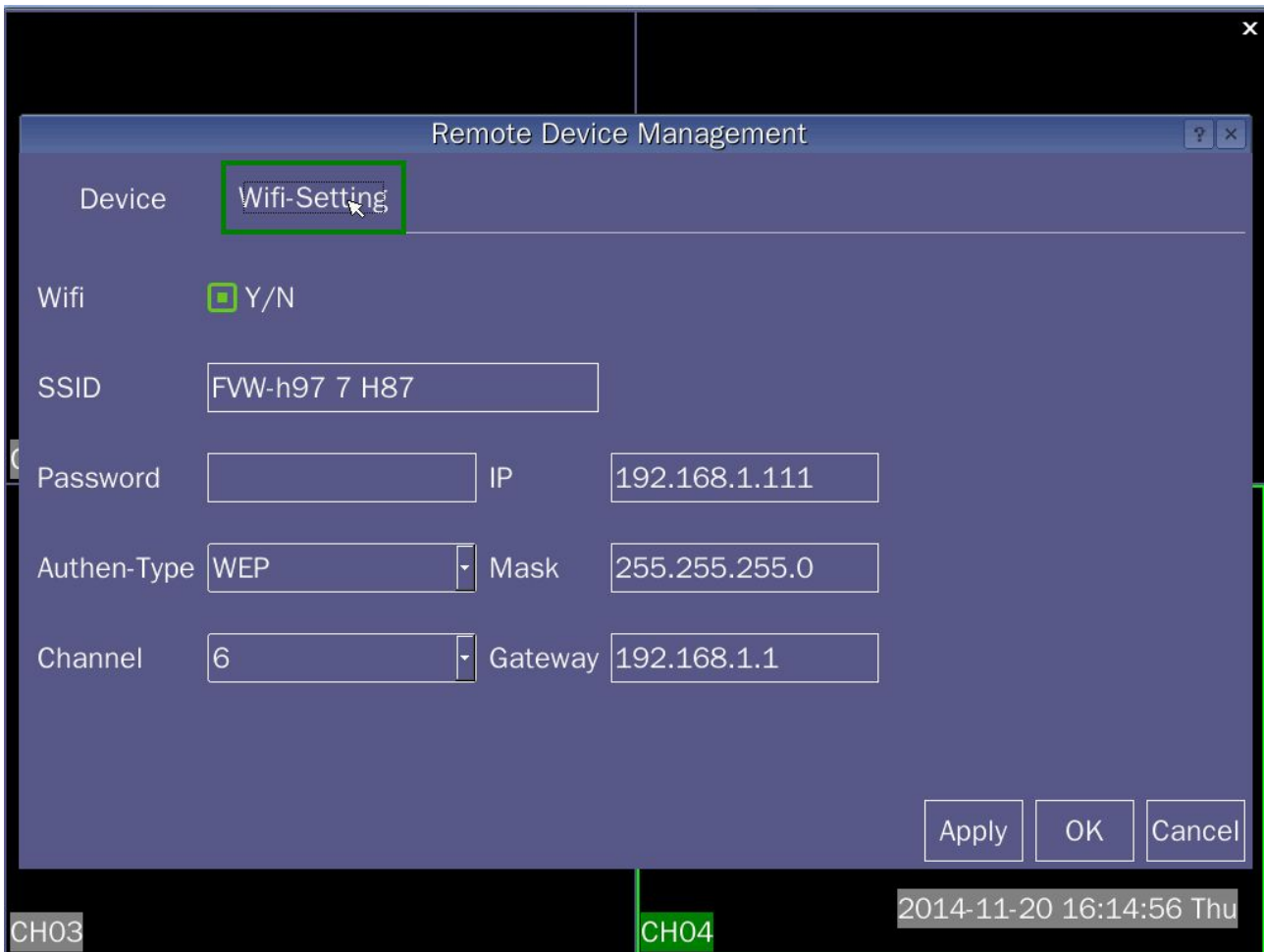


图 4.10

- [**Profile name**] To add digital cameras in the current to shows the name of the network list.
 - [**Type of device**] Select add the device type of digital device.
 - [**Agreement**] Can accordance with the protocol type of device the agreement in device different protocols to Search ,Agreement: ONVIF, PRIVATE.
 - [**Network Settings**] Change the first network camera IP address and gateway,Search list have to be modified webcam.
 - [**Port**] Add network devices connected to the port.
 - [**User name**] User name of digital cameras ;
 - [**Password**] Digital camera login password.
 - [**Search Device**] To display the search to a digital device information
 - [**Agreement**] Search by automatically select the protocol to search, protocol: ONVIF, PRIVATE, ALL.
 - [**Search**] After clicking search, you can based on the selected protocol search digital devices.
 - [**OK**] Select to search the digital devices of list, click OK, digital devices are added to the page numbers in the remote device list.
 - [**Cancel**] Without saving the current page operation, and exit the current page,
- Note:IP network camera with the host to be on the same network segment;**

4.3.2 Wifi-setting



picture 4.11

WIFI router;

[**SSID**] Setting WIFI name:Soft AP mode,Search for the name of the wireless devices;Client mode, Even the name of the router;

[**Key format**] ASCII and HEX,Both formats;

[**Key Length**] 64Bit and 128Bit,Two length selection;

[**Password**] Enter the WIFI password;

[**Encryption type**] OPEN,SHARED,AUTO,TKIPand AES;

[**Authentication Type**] WEP,WAP PSK and WPA2 PSK;

[**Channel**] 1-14 channels optional;

Note:

(1) When you select Client mode, more than a few parameters need to be consistent with the router connected;

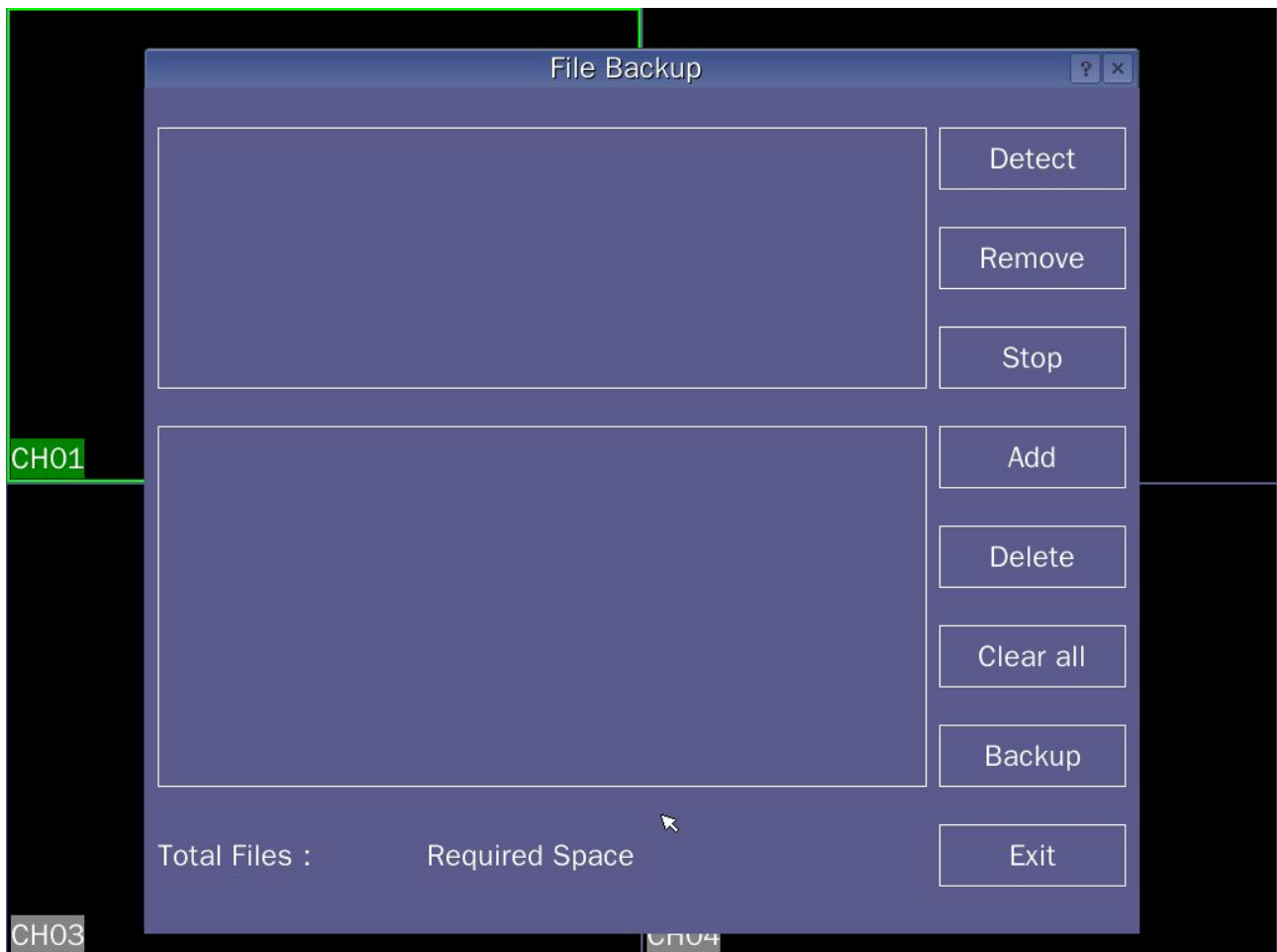
(2) DVR default gateway and router gateway keep consistent, IP address top three the same as gateway, the last one is not the same;

4.4 File Backup

A check on the backup files for backup operations. Can be operated in accordance with the following instructions.

Note:

Before the backup file, you need to install enough to accommodate the storage device storing files; backup is terminated, have been copied to a storage device files can be played back independently.



picture 4.12

[**Detection**] Detects storage devices connected to the device, which can be U disk, SATA hard drives and other devices.

[**Remove**] To select the file to delete, click the Remove button to delete the device files.

[**Stop**] To stop the backup.

[**Add**] Click Add, select the backup file according to the type, channel, time and other attributes.

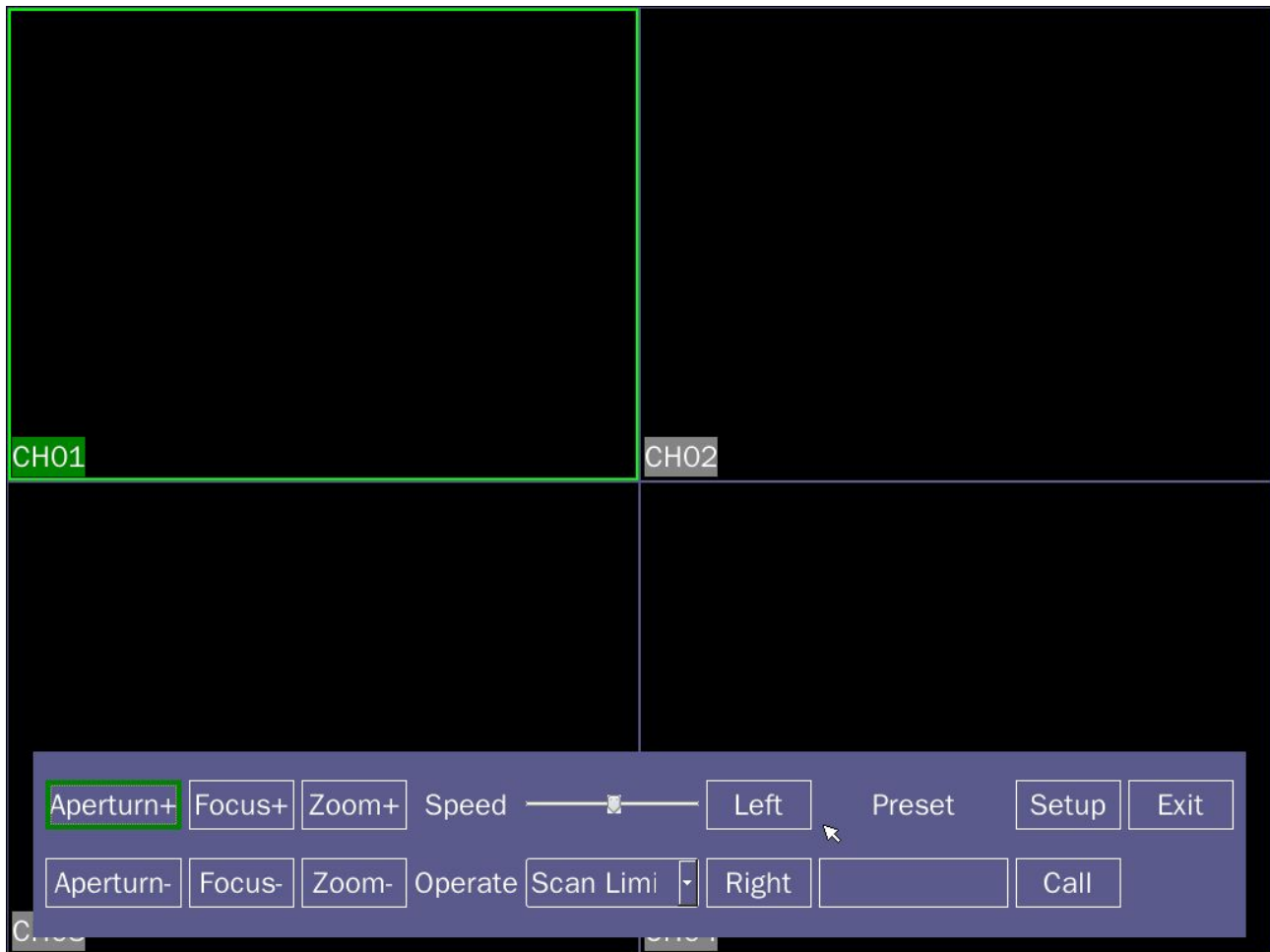
[**Delete**] To delete the file attribute is set to satisfy the file information.

[**Empty**] Empty displays file information.

[**Backup**] Click Backup to start the file backup.

[**Exit**] To exit the menu interface.

4.5 PTZ control



picture 4.13

✧ Control interface shown in picture 3.3, including support functions:PTZ control step size, zoom, focus, iris, operate presets, track, line scan control borders and menus.

Remark:

(1) Make sure the connection between the AIB line of dome camera and AIB interface of DVR is right before operating.

(2) Set the PTZ parameter at [main menu]>[system settings]>[PTZ settings]before operating.

(3) PTZ functions supported by the PTZ protocol support functions decisions.

[Speed] Used to set the PTZ rotation rate.

[Zoom] By Zoom + / Zoom - button to adjust the magnification of the camera.

[Focus] By Focus + / Focus - key to adjust the focus of the camera.

[Aperture] By Iris + / Iris - button to adjust the camera aperture.

[Arrow keys to control] Control the PTZ rotation direction control can support 8,Arrow cursor to move to the ball machine channel screen up, down, left, right position,Screen automatically appears in the corresponding direction of the arrow tips, press and hold the corresponding azimuth direction of the arrow can be controlled.

Special Features:

(1) Preset

Set a location for the preset, calls the preset value, PTZ automatically turns to the setting position.

1)Preset settings

Set a location for the preset, the following steps:

Step 1: Enter PTZ control interface.

Step 2: In the preset input box preset value, the direction keys to select the specified location.

Step 3: Click Settings button to complete the set, that preset value corresponding to the preset position.

2)Preset call

In picture 3.3, enter the preset points in the value of the input box, click on the call button, PTZ turn to the corresponding preset.

(2) Patrol track

By operating head, set a track routes, call patrol tracks, PTZ run on the track line set.

1) Track Set

Trace route settings, follow these steps:

Step 1: click operation option in picture 3.3, select the trajectory set.

Step 2: Click on picture 3.3, "start recording", carried zoom, a series of operations focus, aperture or direction.

Step 3: Click picture 3.3 "End Record" to complete the setup. That tour traces the route that corresponds to the value of the corresponding.

2)Scan Calls

In picture 3.3, click operation option, select the track calls that route PTZ run according to the settings,click on the arrow keys to stop.

(3) Boundary Scan

In the horizontal line, set a course, call the line scan, according to the route set PTZ repeated operation.

1) Line scan settings

Set a horizontal arc of a search for the head of the track, the following steps:

Step One: arrow keys to control PTZ to designated location, click on the Actions menu select scan edge, the left button clicks circles in picture 3.3, that selected the left margin.

Step two: position control key to select the specified location, click on the button right boundary in picture 3.3, that is selected right boundary.

The third step: to complete the set, that set the location for the left and right margins.

Remark:

Border around the same level, according to the head will rotate in the opposite direction from the left edge to the right point boundary point, cyclic rotation;

Not in the same horizontal line around the border, the head only at the end points connected with the left margin horizontal trajectory as the right boundary point, the point of rotation in the opposite direction from the left edge to the right boundary point, cyclic rotation.

2) Boundary Scan call

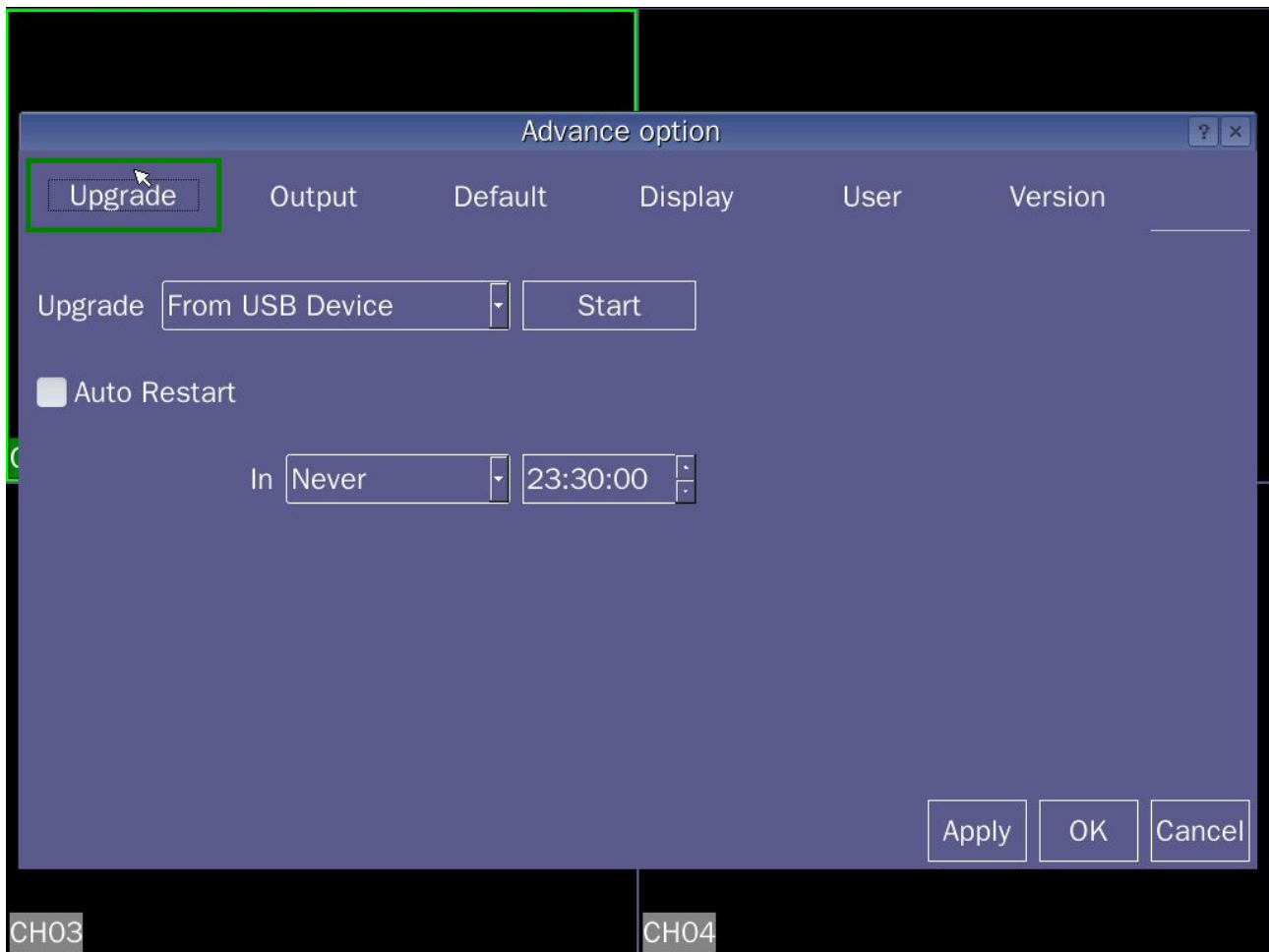
In picture 3.3, click operation option, select the Scan Control calls, according to the head repeatedly running route settings. Click the Stop button to stop the line scan.

(4) PTZ control menu:

In picture 3.3, clicks Options, select the menu calls PTZ control menu, menu options via the arrow keys on the control.

4.6 Advanced Options

4.6.1 System Upgrade



picture 4.14

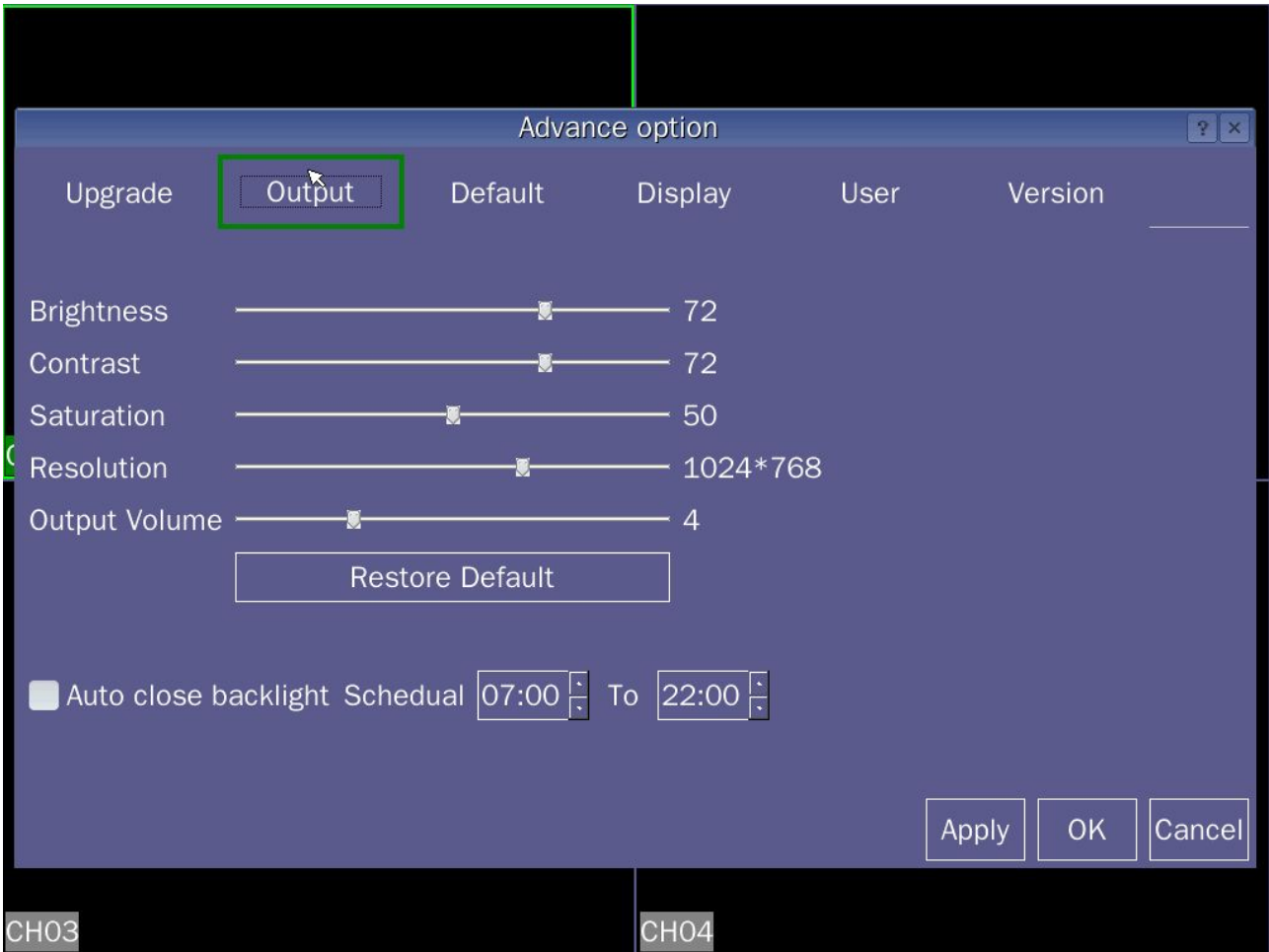
[The system upgrade] Upgrade the file into the empty U disk, insert the USB DVR front office, click on Advanced Options to enter the system upgrade, the system starts automatically upgraded.

[Automatic restart] Sunday or Monday to set a time each day to restart the DVR.

Select **[Auto]** automatically shut off the backlight, set the time period, in this time period, LCD backlight is turned on; at other times, if there is no operation when DVR, DVR will automatically turn off the backlight after 10S.

4.6.2 Output regulation

Adjust the brightness、 Contrast、 Saturation、 Resolution、 Output volume and restore the default function.

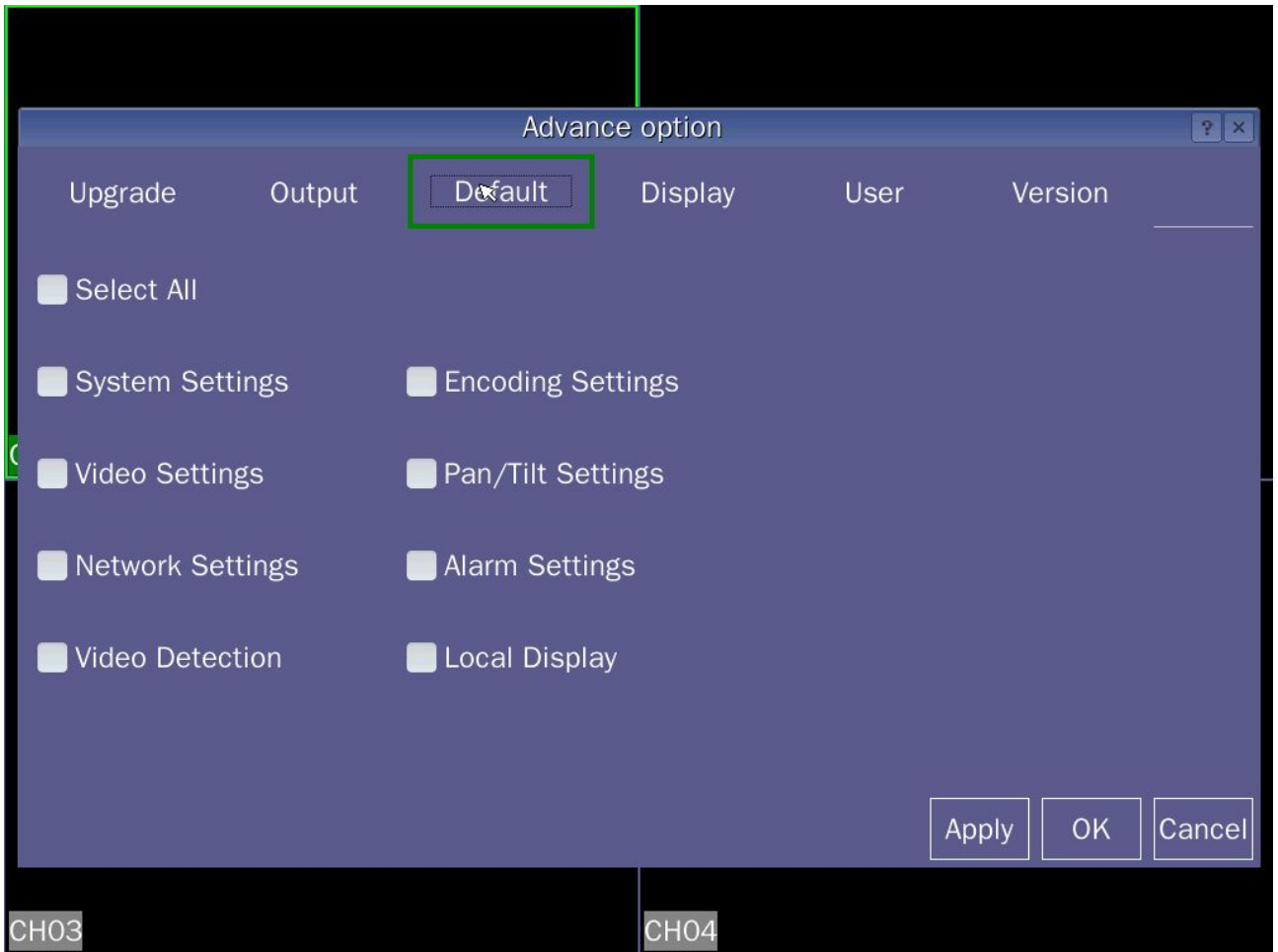


picture 4.15

4.6.3 Restore Default

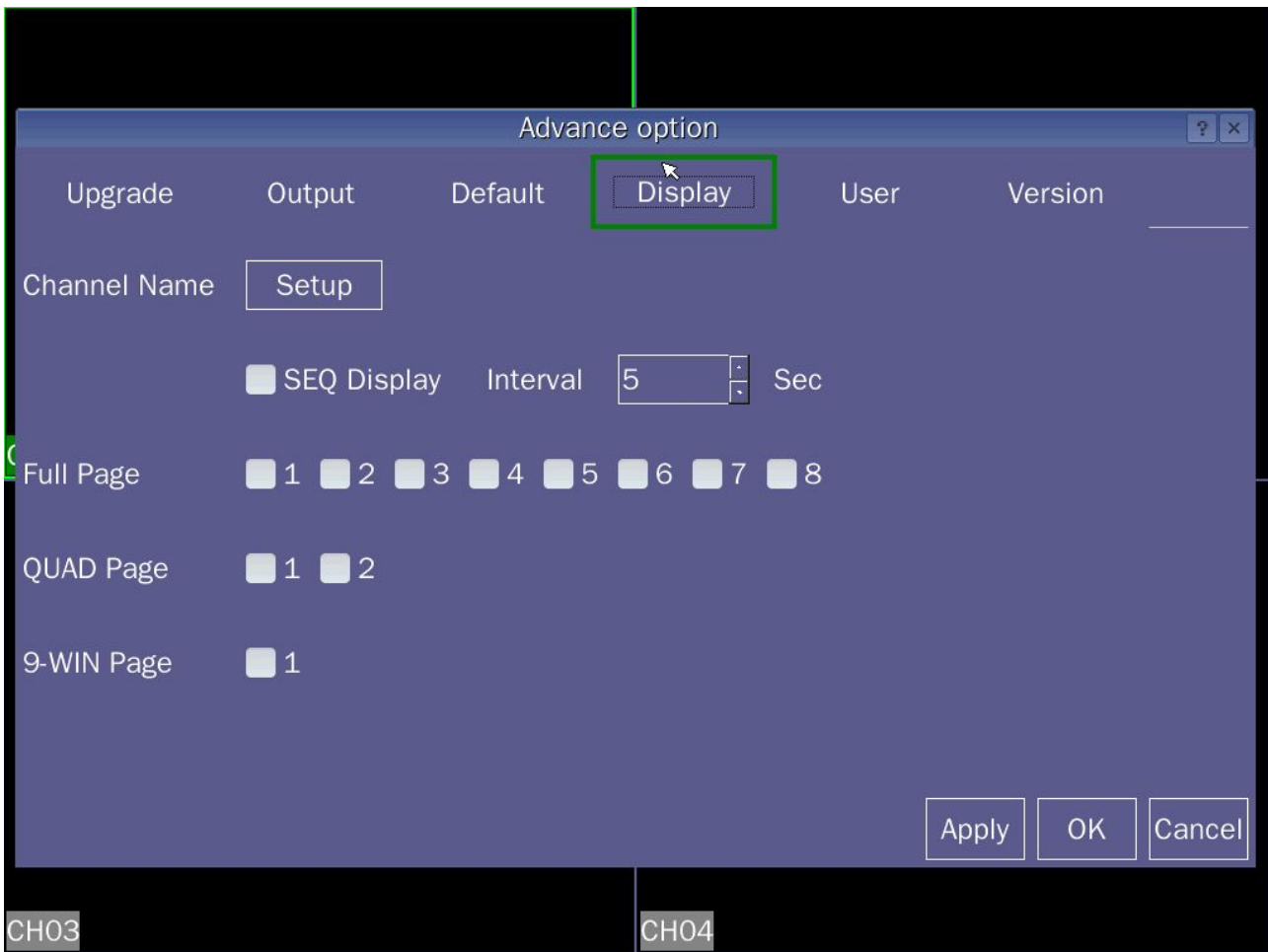
System back to the factory default configuration, you can choose to restore the corresponding settings according to the options on the menu.

Tip: menu color, language, date format, video format, IP address, user accounts, etc. will not be restored.



picture 4.16

4.6.4 Local Display



picture 4.17

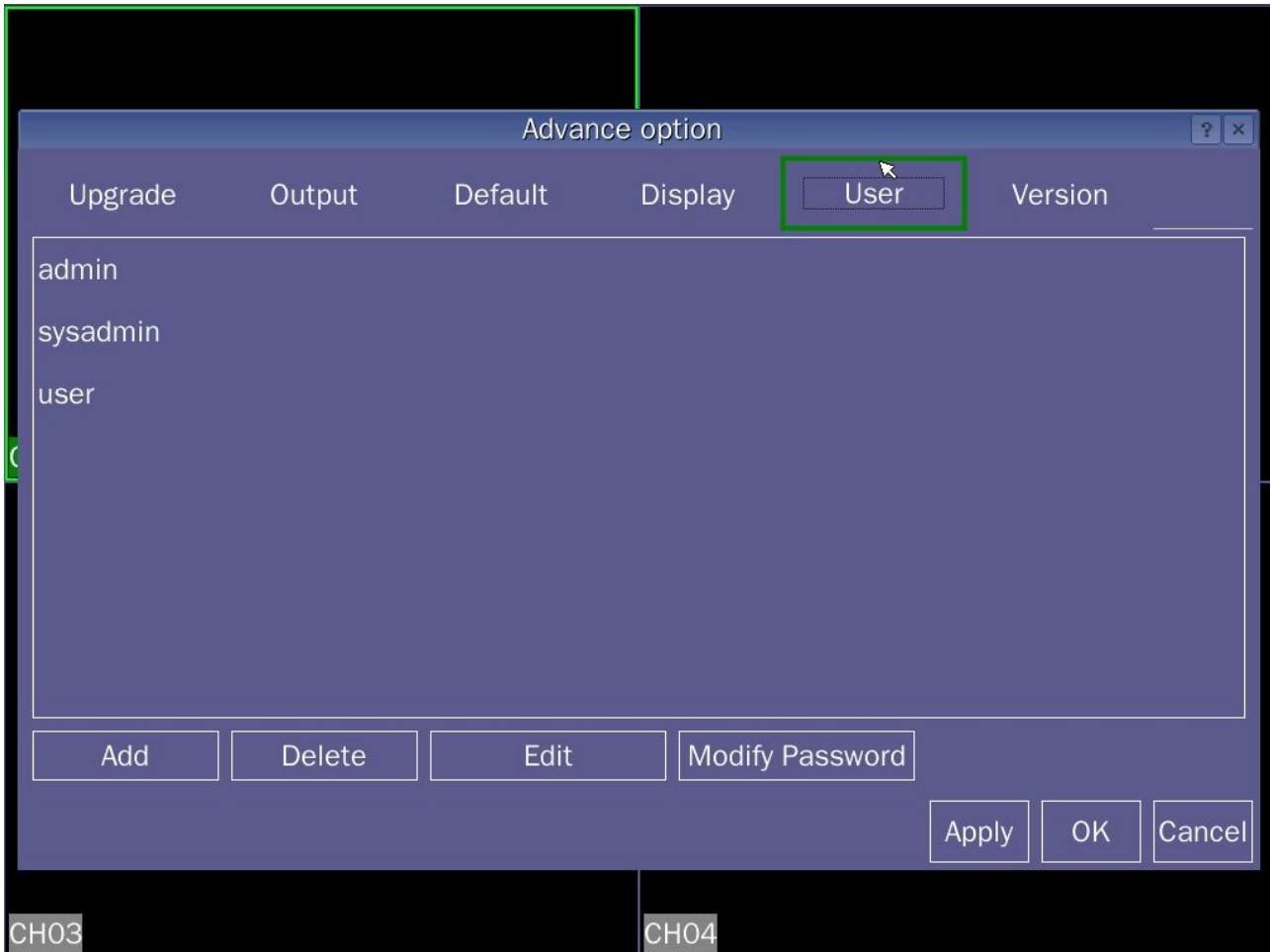
[Channel name] Click the channel name modify button to enter the channel name menu, you can change the name of each channel.

[Start] Open channel polling function, after exiting the menu, in the preview screen turns each screen display.

[Polling interval] Set the patrol time, polling intervals 5-120s, including single polling picture frame, four windows, nine windows, sixteen screen. Single column of the screen box said polling channel, four-column picture of marquee said polling pages (1,2,3,4 channel for the first page, second page 5,6,7,8 channel Show on channel 9,), nine of the screen indicates marquee polling page screen polling order of a single screen, all four selection screen, nine of the screen

4.6.5 User Management

Administrative user rights of the machine.



picture 4.18

- [**Increase**] To add new users to customize, customize select user privileges.
- [**Delete**] Can only delete new users, users can not delete the System Preferences.
- [**Modify User**] Modify the new user rights, can not modify user permissions System Preferences.
- [**Change Password**] to modify the user name login password.
- [**Cancel**] to exit the current menu.

Note:

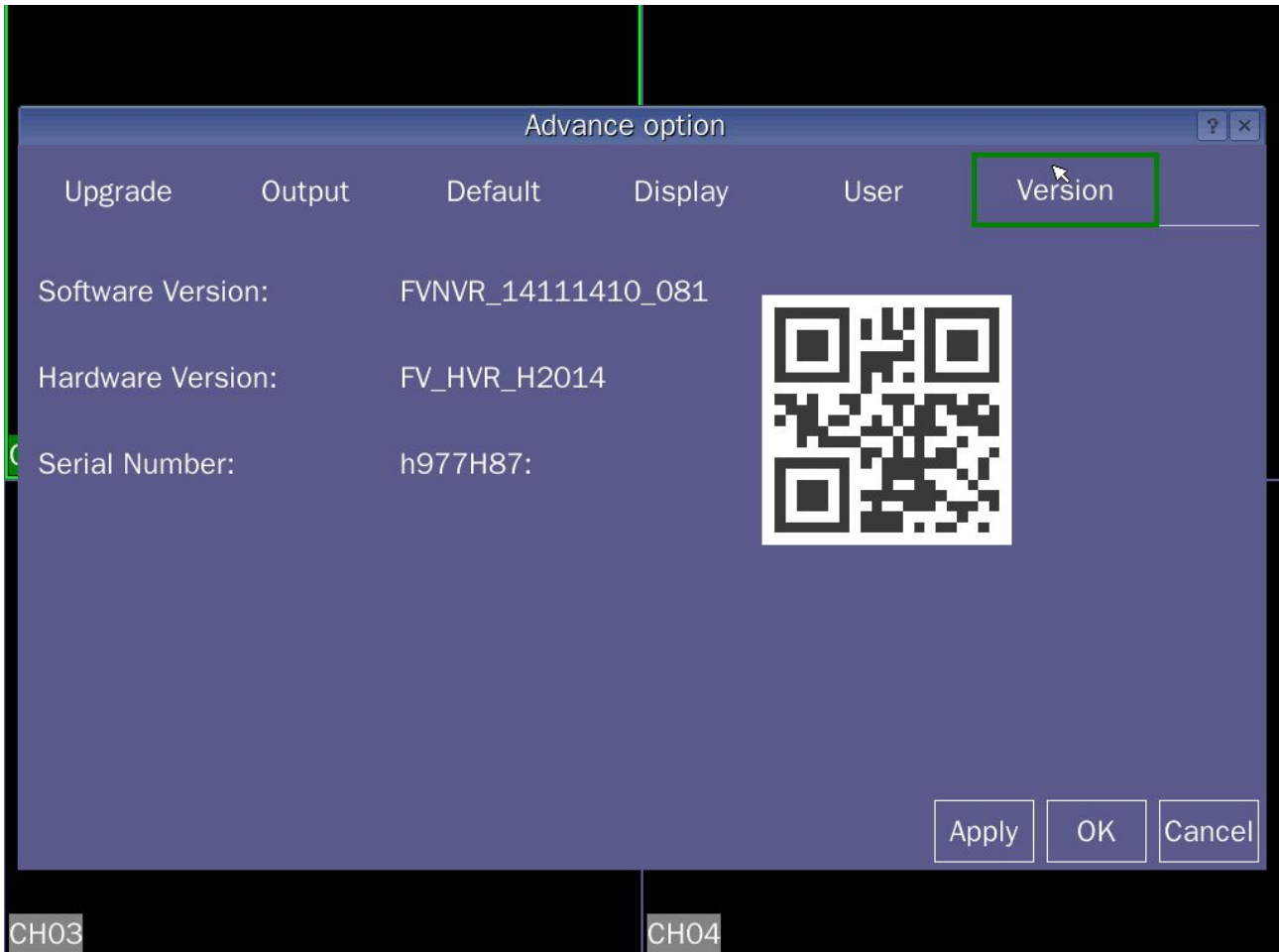
The user name and user group names, such as Chinese characters consisting of a maximum of nine and a length of up to 31 letters, and trailing spaces string is invalid, the middle can have spaces. Legal characters: letters, numbers, Chinese characters.

Does not limit the number of users, add or delete users according to user-defined, user-specific functions can be arbitrary authority.

When the system equipment factory, there are three preset user admin, sysadmin, user, admin, and sysadmin user can change the password, but you can not modify the permissions, users can modify user passwords, permissions can also be modified.

4.6.6 Version Information

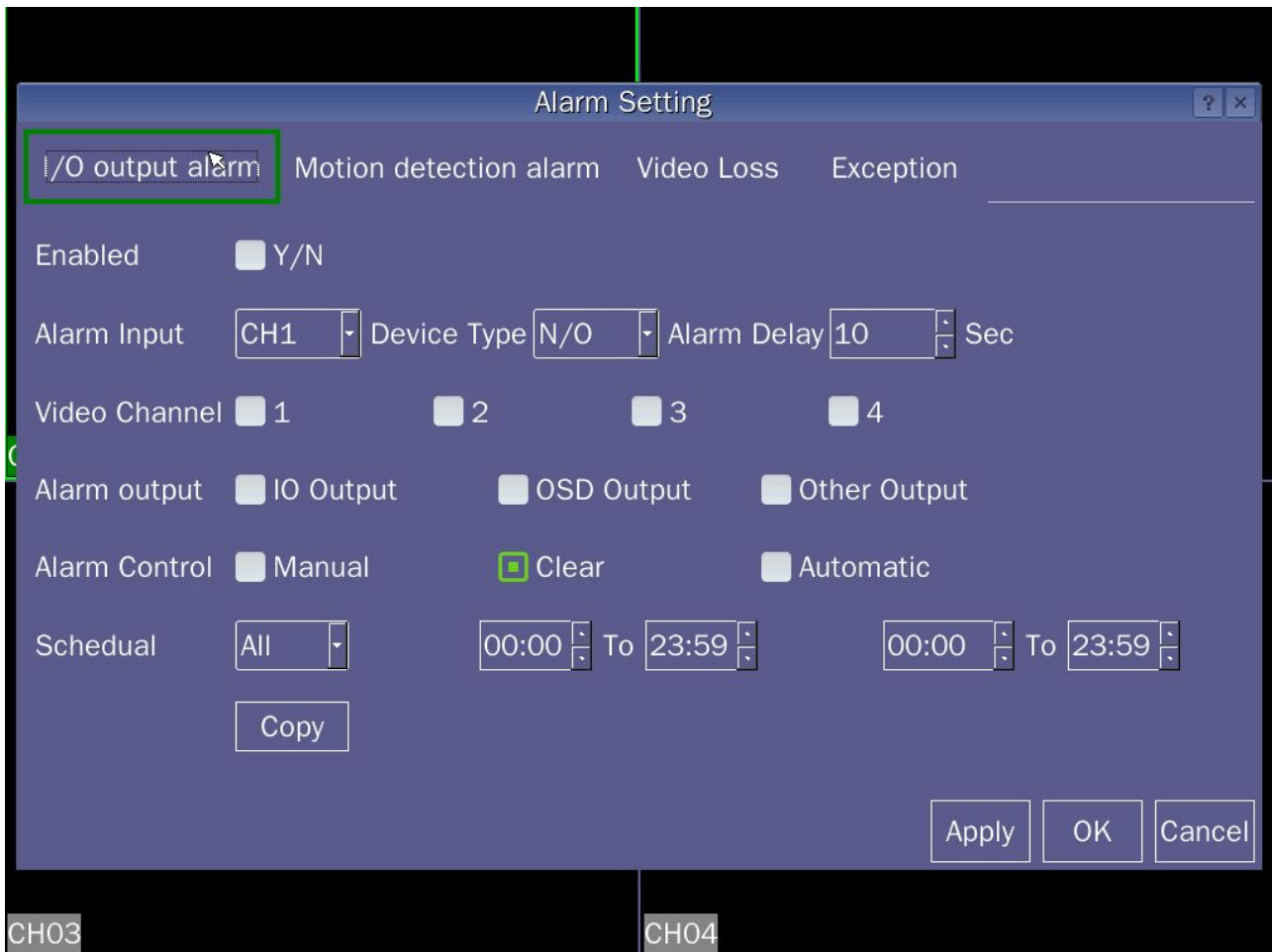
View software version, hardware version and serial number.



picture 4.19

4.7 Alarm

4.7.1 I / O output alarm



picture 4.20

[**Open**] State in the open case to proceed to the next operation.

[**Alarm input**] To select the appropriate alarm channel number, to set all channels set to complete one turn after the other settings.

[**Device Type**] Alarm input device normally open / normally closed type selection (voltage output).

[**Alarm delay**] set the appropriate alarm delay time (0 to 255 seconds), when the external alarm revoked, the system automatically delay the appropriate time, and then turn off the alarm and linkage output.

[**Channel polling**] To select a channel for video alarm signal occurs when the single-screen carousel, carousel set-up time in the [Advanced Options] → [Display] in the local setting.

[**Video channel**] When selecting the desired video channel, when an alarm occurs, the system is in "Auto Recording" mode and "Video Settings" in the "automatic recording" is active period, the system will start alarm recording.

[**Alarm output**] Linkage alarm output when an alarm occurs: I / O output, the screen prompts and other output.

[**Alarm Control**] Set the alarm condition alarm control: automatic arming, disarming the alarm and

manual deployment.

[Period of time] In weeks to set the alarm output time period, which means that in the corresponding period of time to allow the alarm output or screen prompts.

[I / O output] In the selection period output, alarm linkage corresponding alarm output device.

[Screen Tips] In the selection period screen, the screen prompts alarm occurs when the corresponding information.

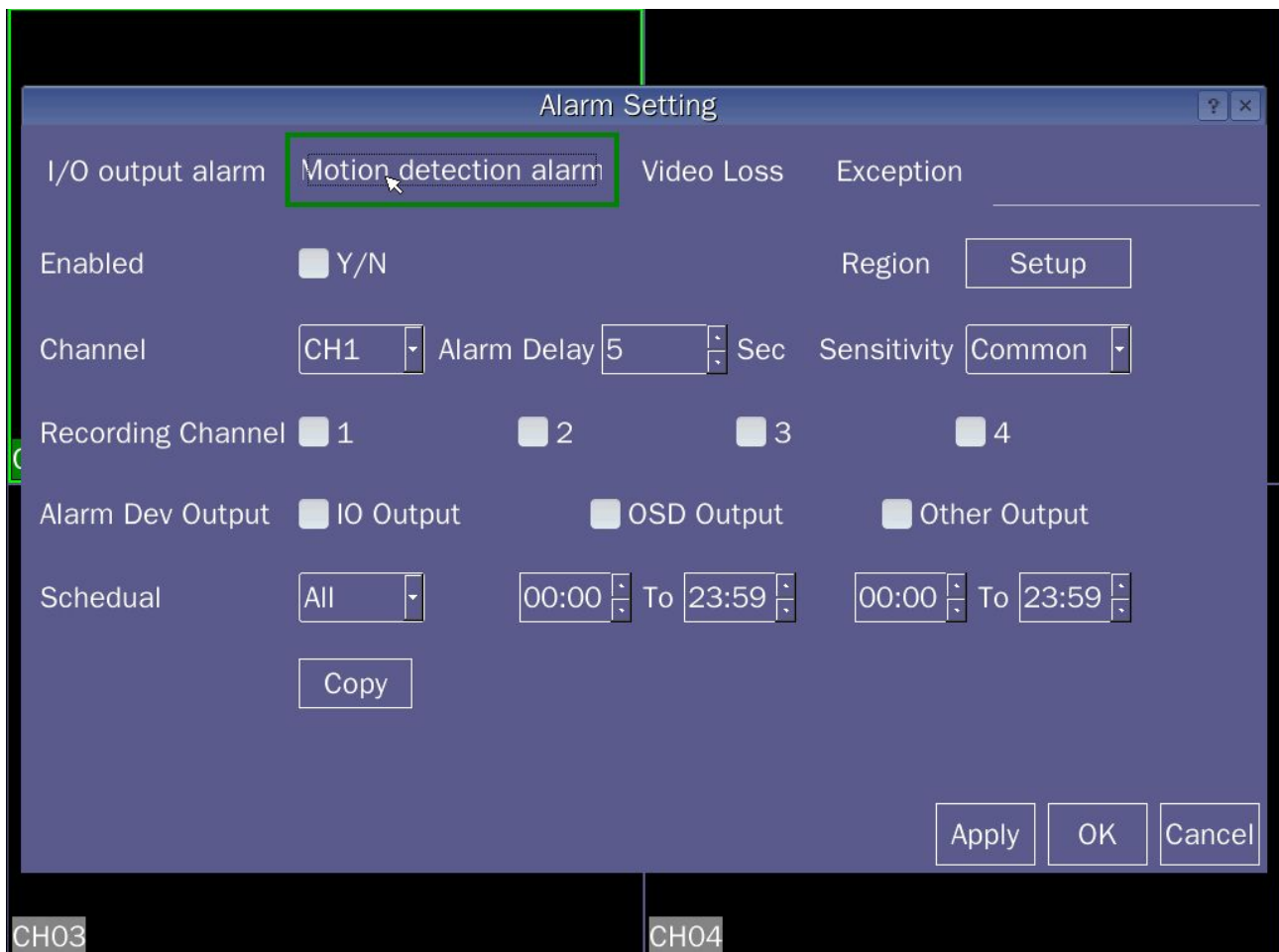
[Other output] In the choice of the output period, other alarm output devices can be linked when the alarm occurs.

[Copy] To copy the current settings to other information channels to other channels;

Note: Users need to save each set after the completion of each channel.

4.7.2 Motion detection

By analyzing the video image, when the system detects a mobile signal reaches a preset sensitivity appears, opens motion detection alarm.



picture 4.21

[Open] State in the open case to proceed to the next operation.

[Channel] Select the channel you want to set motion detection area, after setting the channel alarm state, in turn set other channels.

[Sports area] Click on "Settings" in the area of privacy settings, Green block selection area, Activities in this area will trigger motion detection alarm, Click the lower right without the "X" icon to exit and save the

settings;

[**Alarm Type**] Select Detect Settings Type: motion detection and video loss.

[**Alarm delay**] Set the alarm delay alarm delay time (5-255 seconds), after the end of the video loss alarm, the system automatically extend the appropriate time, and then turn off the video and linkage output.

[**Sensitivity**] Can be set to: highest, high, normal, low, low.

[**Video channel**] To select the desired channel recording channel (multiple choice), video motion detection occurs, the system is in "Auto Recording" mode and the "video settings" in the "Auto Record" is an effective period of time, the system will start automatic recording.

[**Alarm output**] Start the corresponding alarm output Alarm output when motion detection occurs.

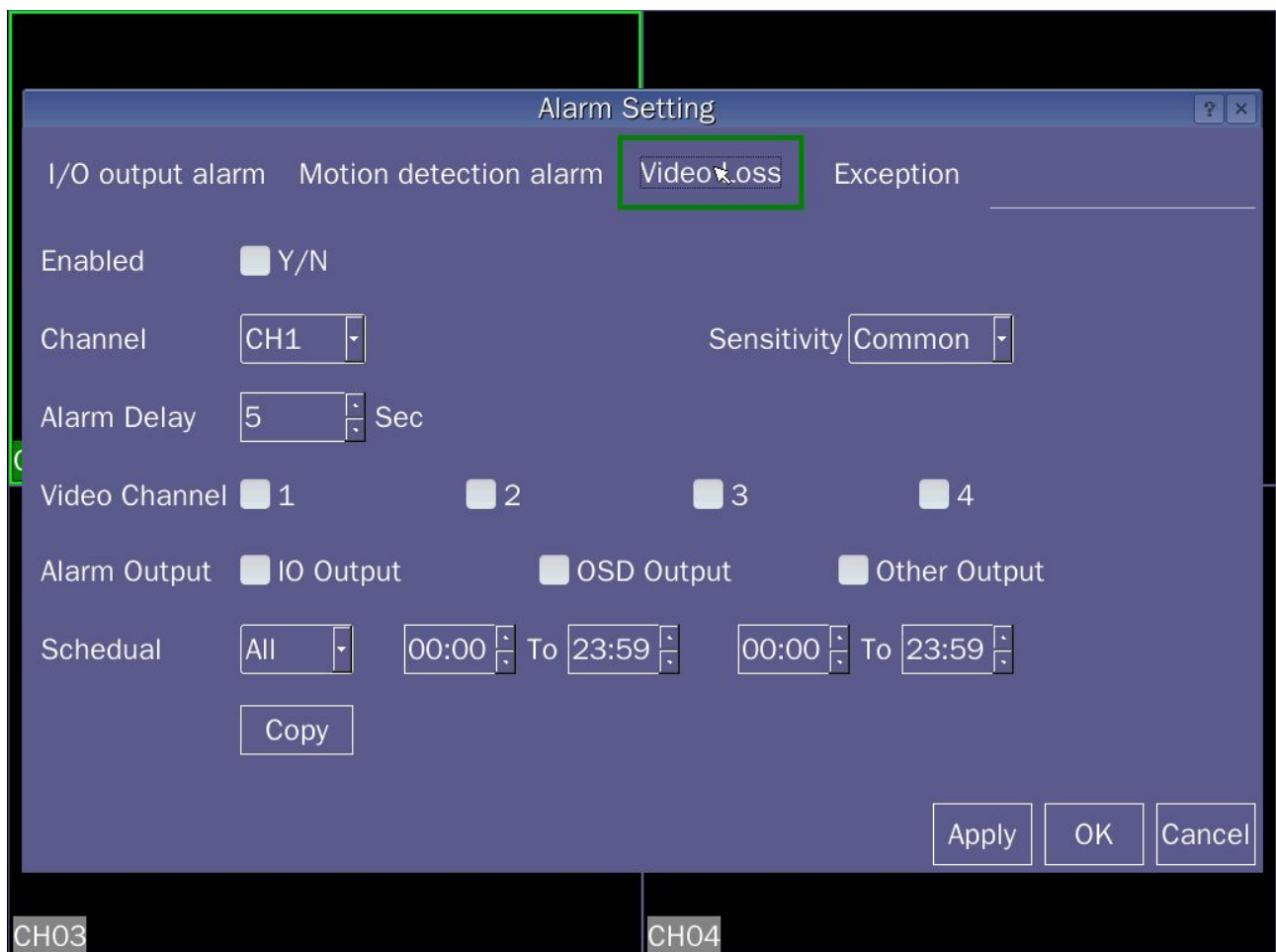
[**Period of time**] In weeks to set the alarm output time period, which means that in the corresponding period of time to allow the alarm output or screen prompts.

[**I / O output**] In the selection period output, motion detection alarm occurs when the corresponding linkage alarm output device.

[**Screen Tips**] Screen in the selected time quantum motion detection alarm screen prompts appropriate information.

[**Copy**] To copy the current settings to other information channels to other channels.

4.7.3 Video loss alarm



picture 4.22

[**Open state**] In the open state, then proceed to the next operation.

[**Channel**] Select Set video loss alarm channel, after you set the channel alarm status, in turn set other channels.

[**Alarm Type**] Select the type of detection settings: Video loss.

[**Alarm delay**] set the alarm delay time (5-255 seconds), after the end of the video loss alarm, the system automatically extend the appropriate time, and then turn off the video and linkage output.

[**Sensitivity**] Can be set to: highest, high, normal, low, low.

[**Video**] To select the desired channel recording channel (multiple choice), when the video loss occurs, system is in "Auto Recording" mode, the "video settings" in the "Auto Record" on effective period of time, the system will automatically start video.

[**Alarm output**] When the video loss alarm started corresponding occurs alarm linkage output.

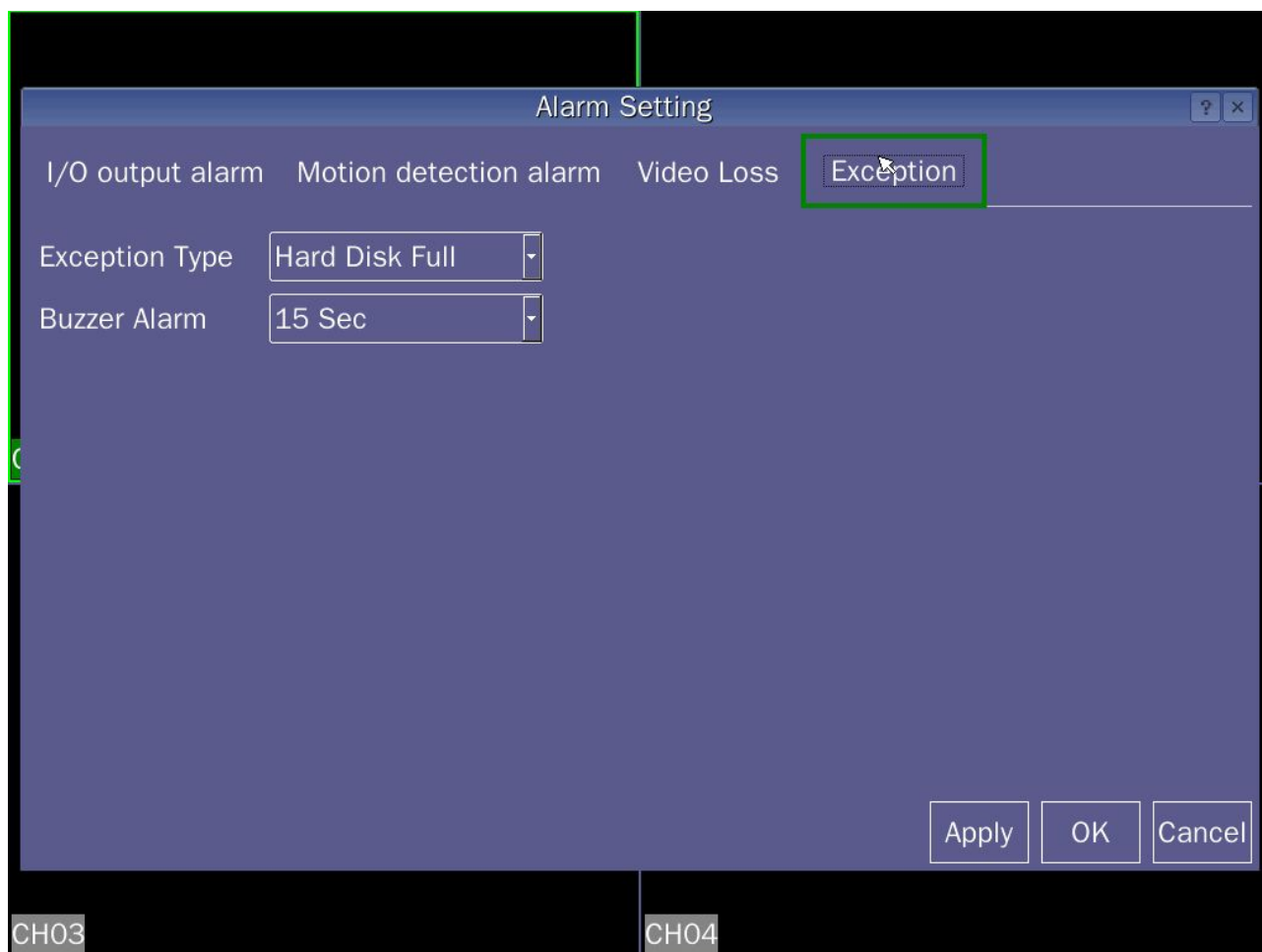
[**Period of time**] In weeks to set the alarm output time period, which means that in the corresponding period of time to allow the alarm output or screen prompts.

[**I / O output**] In the selection period, when the video loss alarm can occurs corresponding linkage alarm output device.

[**screen prompts**] In the selection period, when a video loss alarm occurs screen prompts appropriate information.

[**Copy**] The current channel settings information copy to other channels.

4.7.4 Exception Handling



picture 4.23

[**Exception Type**] To select unusual circumstances, disk full, hard disk error, video loss, motion detection, external alarm.

[**Buzzer alarm**] When the buzzer alarm abnormal situation, whether to allow the buzzer.

[**Alarm output**] Appears abnormal, activate the corresponding alarm linkage output.

Tip: You can view the system log exception details recorded.

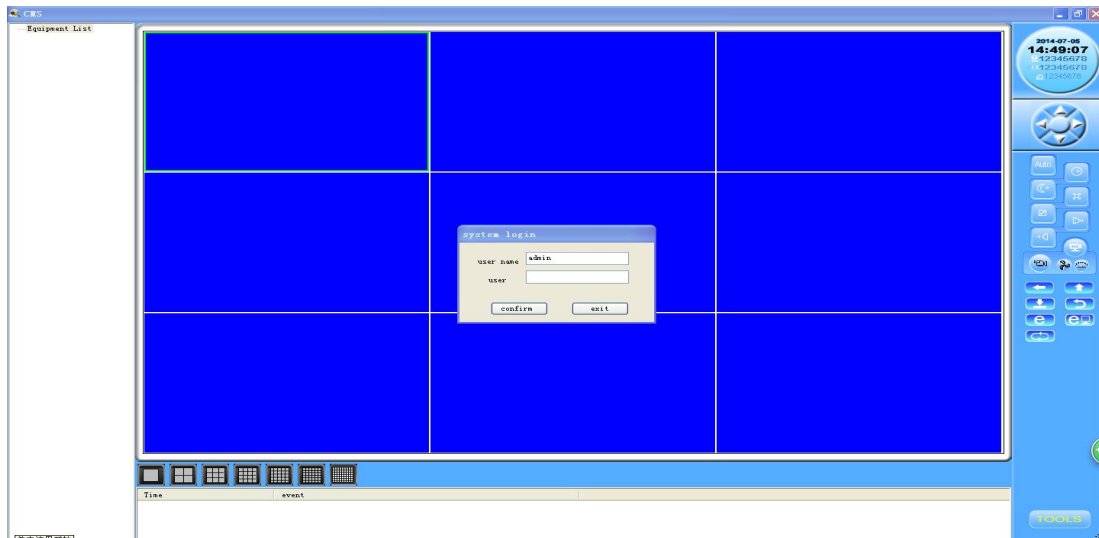
Chapter V DVR Management Software User Manual

5.1 Installation

1. Ensure the software installation and operation environment over WINDOWS 2000 .
- 2 .Install the software to run with the installation of the system.

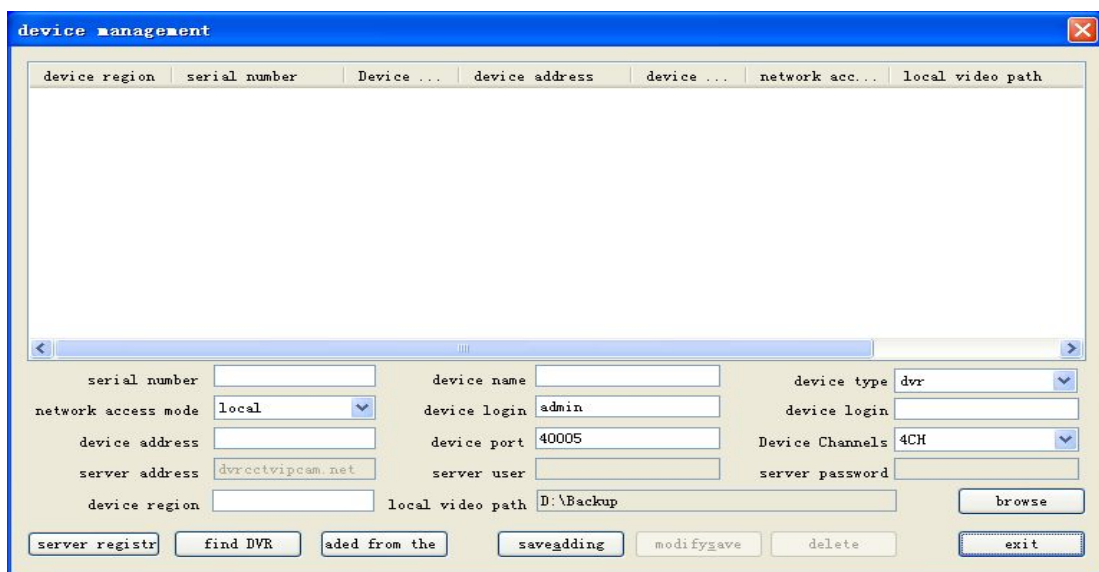
5.2 Settings, log on locally Management Software

- (1) Double-click the shortcut on the desktop  into the login screen,As shown in picture 5.1.



picture 5.1

- (2) Click the bottom right corner **[TOOLS]** icon, select **[Device Manager]** into the device parameters, as shown in picture 5.2.



picture 5.2

[**Serial Number**] The label in the back of DVR HAVE 14 OR 28 digits,the last 14 digits is the device serial number or you can check the number in [**DVR System**]→[**system information**]→[**version information**]

[**Device name**] Define the name by yourself

[**Device type**] [**Device Type**] Default to dvr, types divide into dvr, ipc-private and ipc-onvif.

[**Network access method**] Two method:local and remote control network access way.if it is local connection, then select local access method

[**Login account**] [**Login password**] The user name and password in the DVR

[**Device address**] Same as IP address in the DVR device [System setting]→[net work setting]

[**Device port**] The default value is 40005,no need to change

[**Device Channels**] The default value is 4 channel,1,4,8,16,32 channel for option

[**Server address**] Login cloud server address, the default is dvrctvipcam.net, no need to change.

[**Server user**] [**Server password**] On cloud servers registered user name and password, after cloud server validation user information, then clients can remotely access the device.

[**Device region**] User area, such as sz is shenzhen ,the device area to write Shenzhen,

[**Local recording path**] Display the local record storage path

[**Browse**] Customized the path you need to storage the video file .

[**Cloud server registration**] Login DVR cloud server registration DVR equipment.

[**Search DVR**] Searching to find a LAN connected DVR device , double-click on the DVR device to set.

[**Download**] Download the server host information from the cloud server, entered the registered user name and password from cloud servers , click "access", Search the machine information, click "Save",host information is automatically added to the list;

[**Save and add**] Save the new adding device information

[**Save and modify**] Save the information you have modified.

[**Delete**] Delete the currently selected device users

[**Exit**] Exit the current settings management interface.

(3) Click[save and add] after setted the parameters,show as below

The screenshot shows a window titled "device management" with a table and a form below it.

device region	serial number	Device ...	device address	device ...	network acc...	local video path
sz	47870C5E711003	4CH	192.168.1.110	40005	long distance	D:\Backup

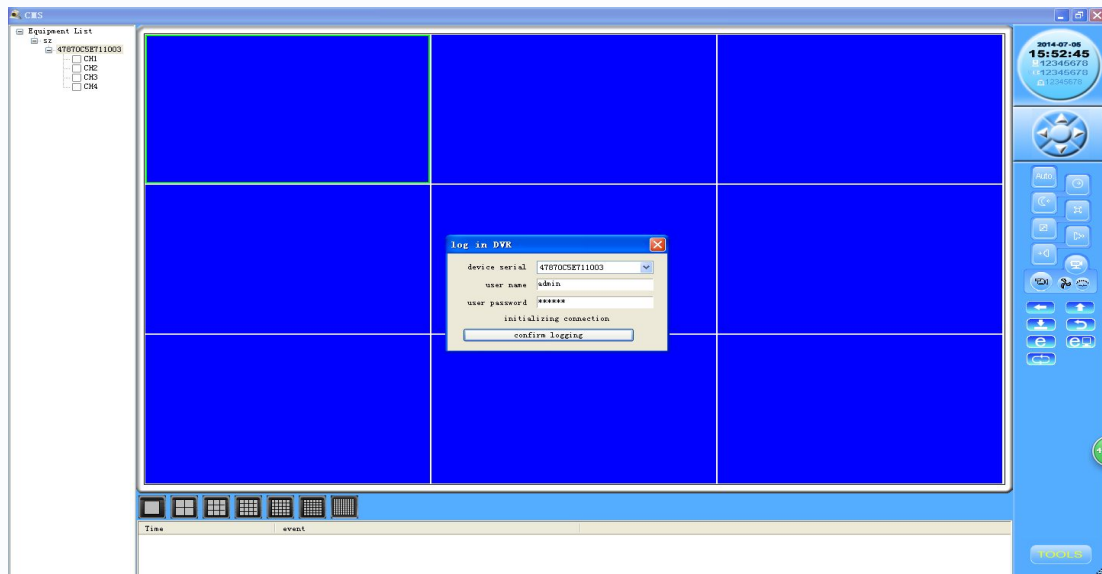
Below the table is a form with the following fields:

- serial number: 47870C5E711003
- device name: sz
- device type: dvr
- network access mode: local
- device login: admin
- device login: *****
- device address: 192.168.1.110
- device port: 40005
- Device Channels: 4CH
- server address: dvrctvipcam.net
- server user: admin
- server password: *****
- device region: sz
- local video path: D:\Backup

At the bottom of the form are several buttons: server registr, find DVR, aded from the, saveadding, modifygave, delete, and exit.

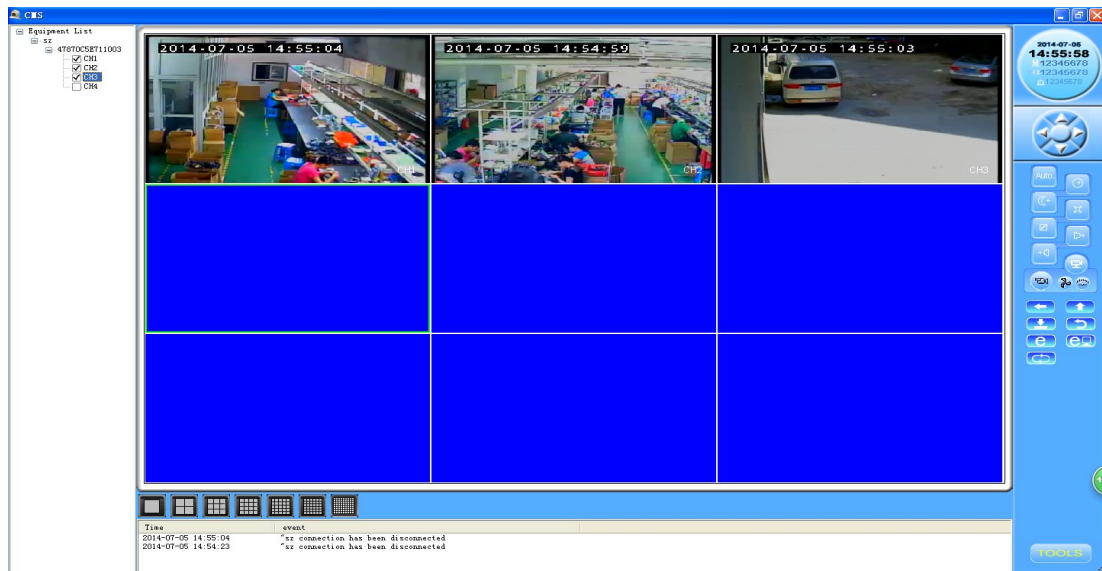
picture 5.3

(4) Exit the current interface, click the device list channel to display the login screen .



picture 5.4

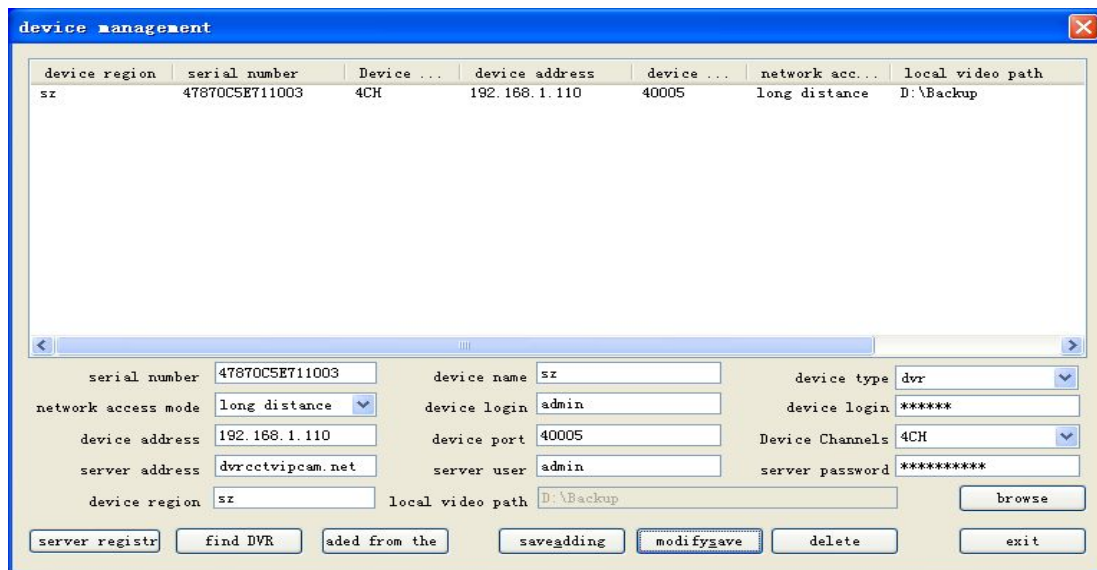
(5) Determine the front login first recognized in DVR equipment inside **[System Settings]** → **[Network Settings]** information set to match with the PC settings, IP address consistent. Login to connect to the DVR to determine the local connection. Refer to (DVR description says the [Network Settings] instructions set).



picture 5.5

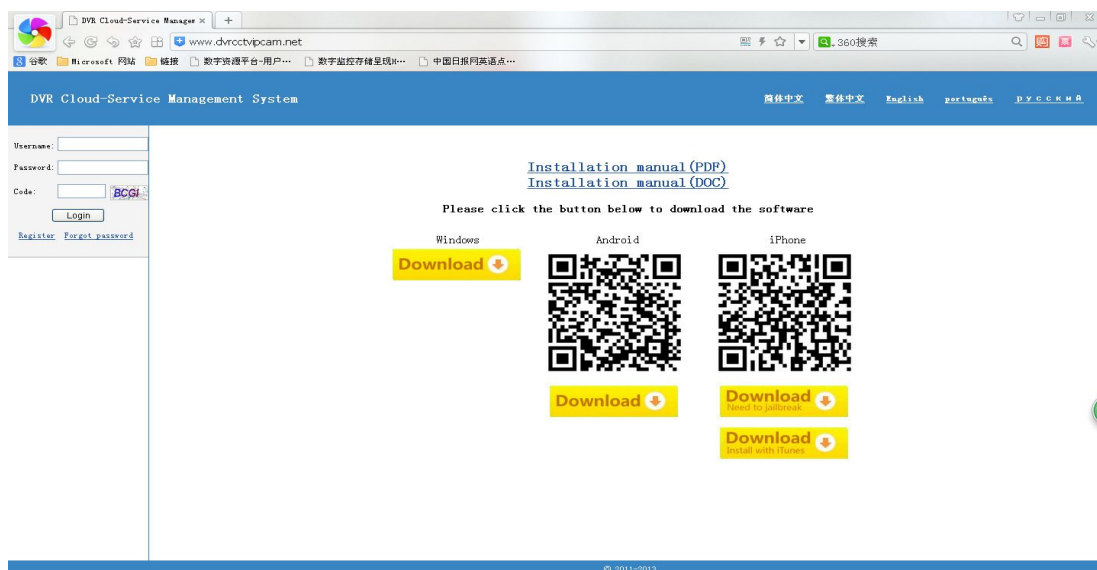
5.3 Settings, log on remote management software

(1) Double-click the shortcut on the desktop into the login screen, as shown below.



picture 5.6

(2) Enter <http://www.dvrctvpcam.net> In the IE browser page into DVR cloud server login system.



picture 5.7

(3) Click the [user registration], type the relevant information, then click the register immediately

Welcome to useDVR Cloud-Service Management System

* Username:
6 to 20 characters, including letters, numbers, underscores, begin with a letter, letters or numbers at the end

* Password:
6 to 20 characters, case sensitive

* Password again
6 to 20 characters, case sensitive

Binding QQ
Binding QQ, you can log in directly with QQ account password

Binding MSN
Can be directly used to bind MSN MSN account password

* Device SN
Please enter the characters on the device serial number 14

* Code:
Please enter the characters in the picture, regardless of the case, click on picture to refresh the verification code

picture 5.8

(4) Return to the login page after successful registration, enter successfully registered user name and password can login the Internet cloud server system. Click Add the equipment, input the DVR serial number, click add.

DVR Cloud-Service Management System

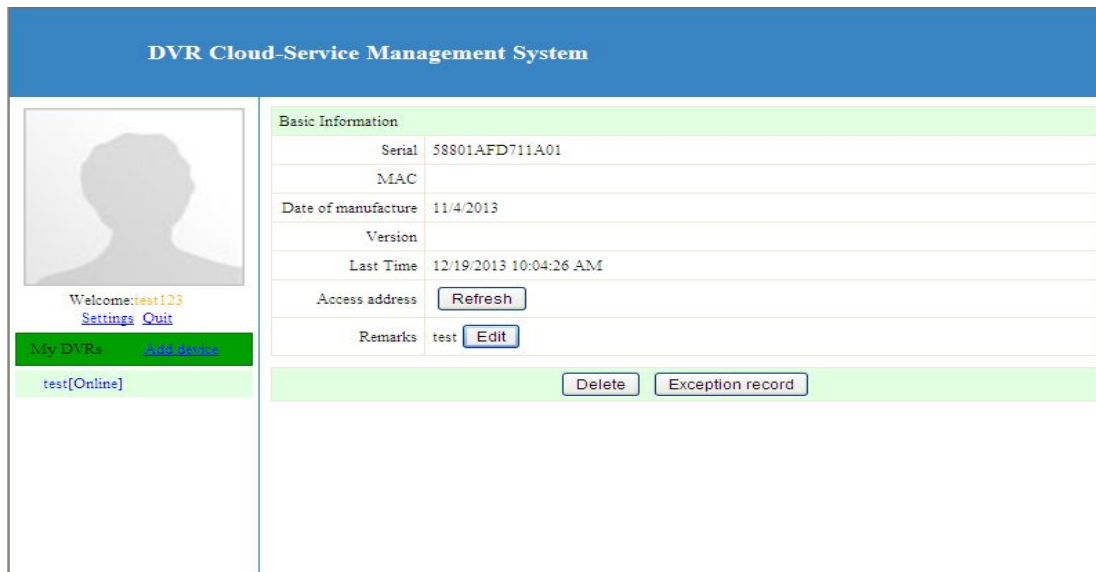
Welcome: test123
[Settings](#) [Quit](#)

My DVRs

Device ID:

picture 5.9

(5) Double-click DVR under my DVR, then you can check the information about the DVR.



picture 5.10

[**Add note**] Note the current DVR

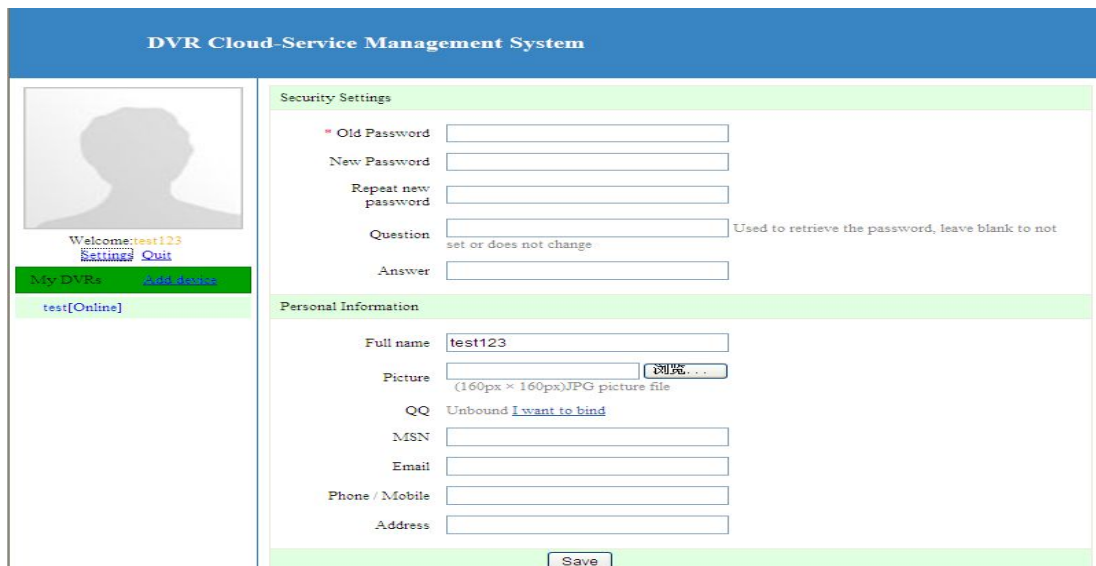
[**Management right transfer**] Give the DVR permissions to other users.

[**Delete equipment**] Delete the DVR information that already have

[**Abnormal recorder**] Check the abnormal recording on the DVR

[**Abnormal notification**] Click add, select SMS, telephone or E-mail to notify the abnormal, then input corresponding account, click confirmed.

[**Setting**] Set the user password and personal information.



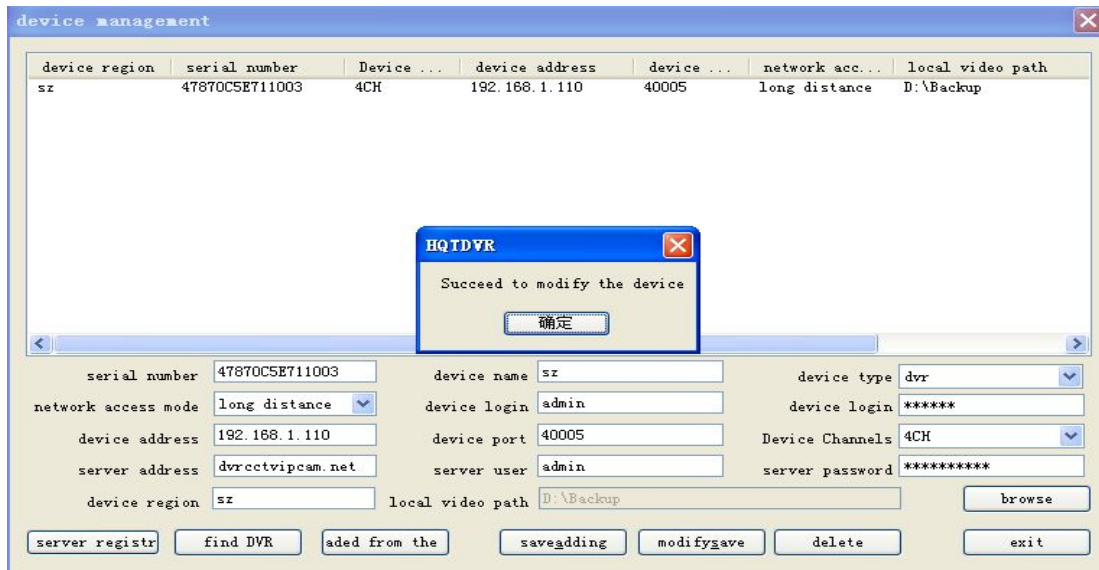
picture 5.11

[**Security setting**] You can modify your password, set the security question to find it and click SAVE after finished

[**Personal information**] Set your name, image, QQ or other corresponding information, click SAVE after

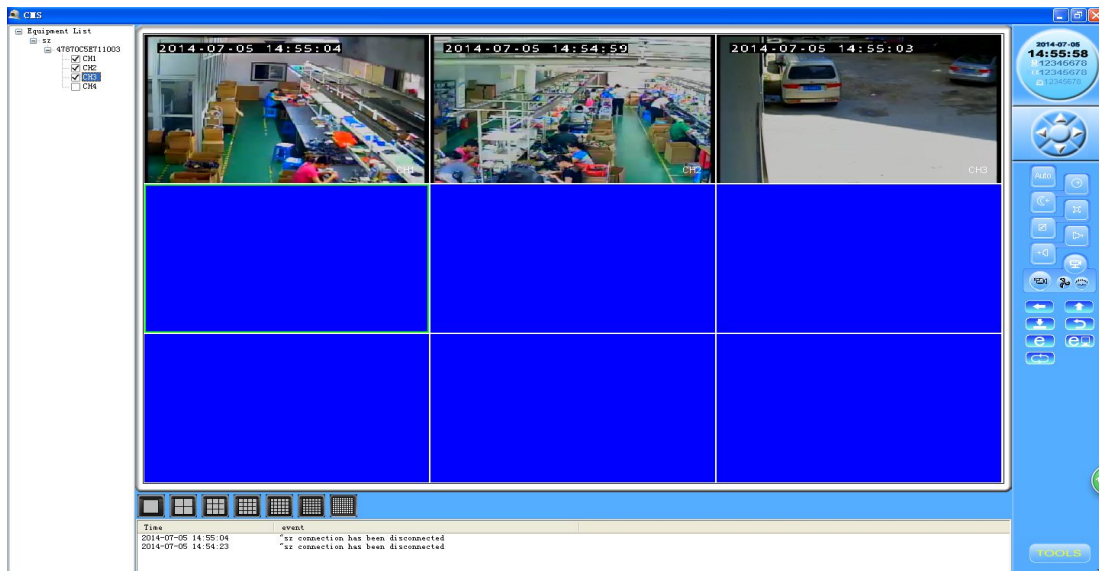
finished.

Modify the [Network access method] to remote,input the user name and password of the cloud server,click SAVE and MODIFY.



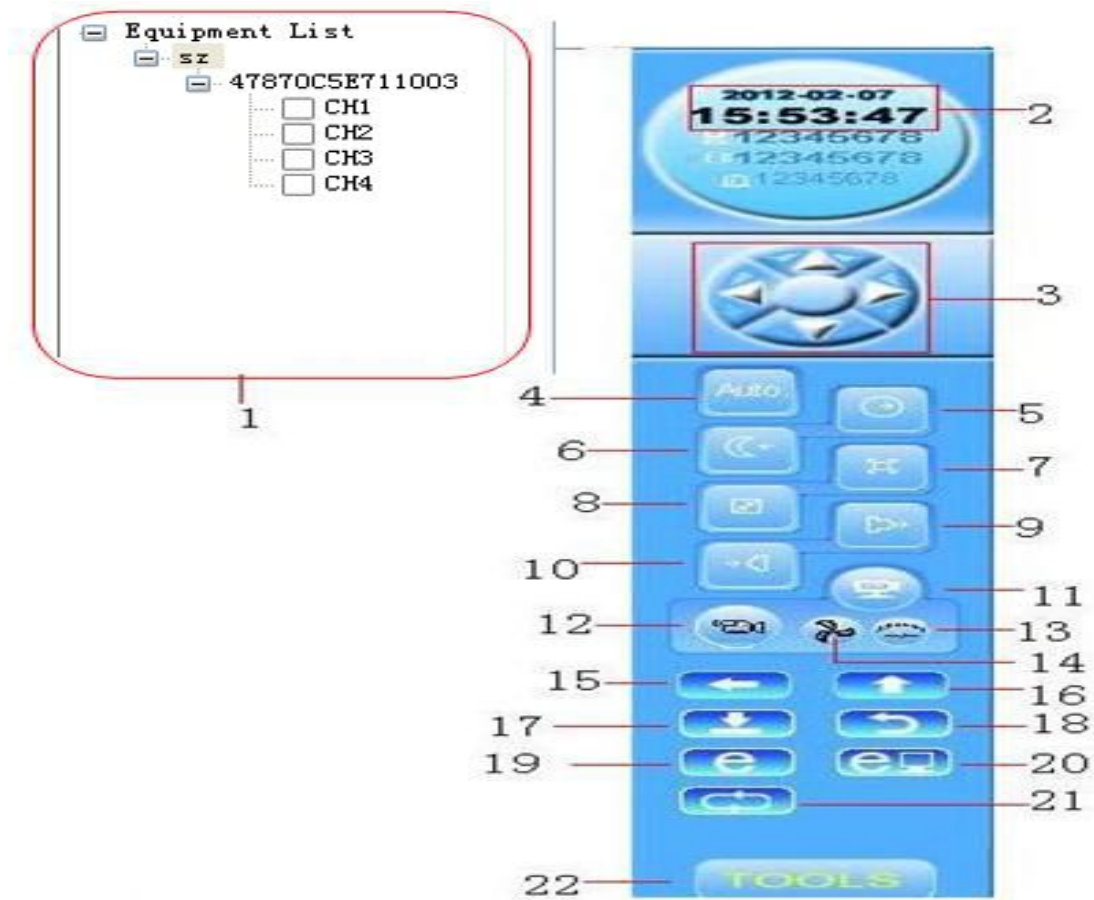
picture 5.12

(6) Click confirm to exit,click the left channel then displays the login dialog box,click confirm login,then you can manage your DVR remotely.



picture 5.13

5.4 DVR manage software function key introduction

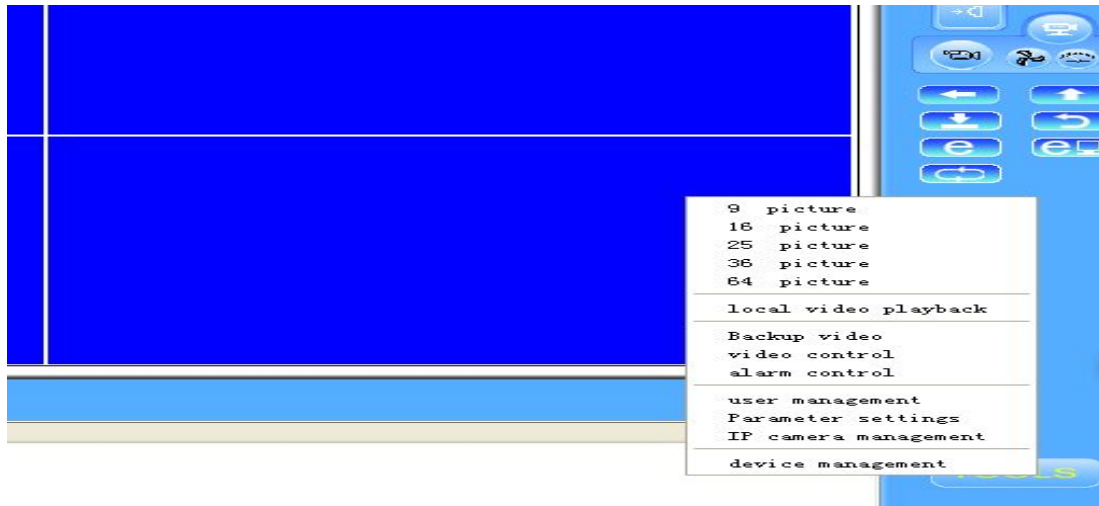


picture 5.14

- | | |
|---|---|
| (1) choose the channel | (2) Computer system time |
| (3) Arrow keys, Enter key (middle key) | (4) Camera functions On / Off automatically |
| (5) Increase the aperture | (6) Decrease the aperture |
| (7) Increase the focal length | (8) Reduce the focal length |
| (9) Increase zoom | (10) Reduce Zoom |
| (11) PTZ control switch button (power supplies, fans, rain rinse, preview, return, video) | |
| (12) Power button | (13) Wiper key |
| (14) Fan key | (15) tree list on/off |
| (16) alarm list on/off | (17) Data backup key |
| (18) data recovery key | (19) access to system key |
| (20) access the local system key | (21) data switch key |
| (22) parameter setting key | |

5.5 Brief introduction of[tools]

Note:you can only control the video,alarm setting,parameter setting after the device connect successfully.



picture 5.15

5.5.1 Local video playback

Click [TOOLS]--[local video playback],Dialog pops up as shown, select the video file, click Play.

Note: pop-up dialog for last played video files, you can click the red mark to back to the previous menu if want to select other channels video file

5.5.2 Video control



picture 5.16

[**Stop record**] Click the channel you want to stop,click the setting then it stop recording

[**Record automatically**] Click the channel you want to record automatically,click the setting then it

starts

[**Manual recording**] Click the channel you want to record by yourself,click the setting then it starts recording manual

5.5.3 Alarming control



picture 5.17

[**Disarming**] Click the channel you want to disarming,click the setting then it stop alarming

[**Auto Arming**] Click the channel you want to arm automatically,click the setting then it start auto arming

[**Manual Arming**] Click the channel you want to arm manually,click the setting then it start manual arming.

5.6 parameters setting

5.6.1 Normal setting



picture 5.18

[**System time**] Set current date and time

[**Date format**] Select the date display format, including: YMD,MDY,DMY.

[**Date separator**] Select the separator of date format.

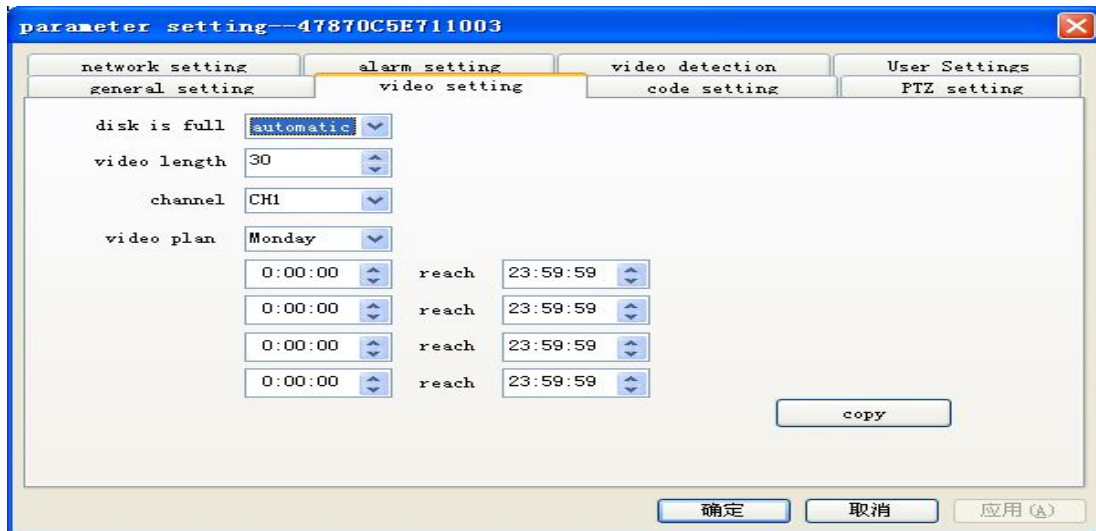
[**Time format**] Select the time format,24-hour,12hour for option

[**Language selection**] English and Chinese for option

[**Machine number**] Used for a remote controller,only the input remote address is same as DVR number,then you can remote control it

[**Video Format**] Format of record video,NTFS and PAL included

5.6.2 Record setting



picture 5.19

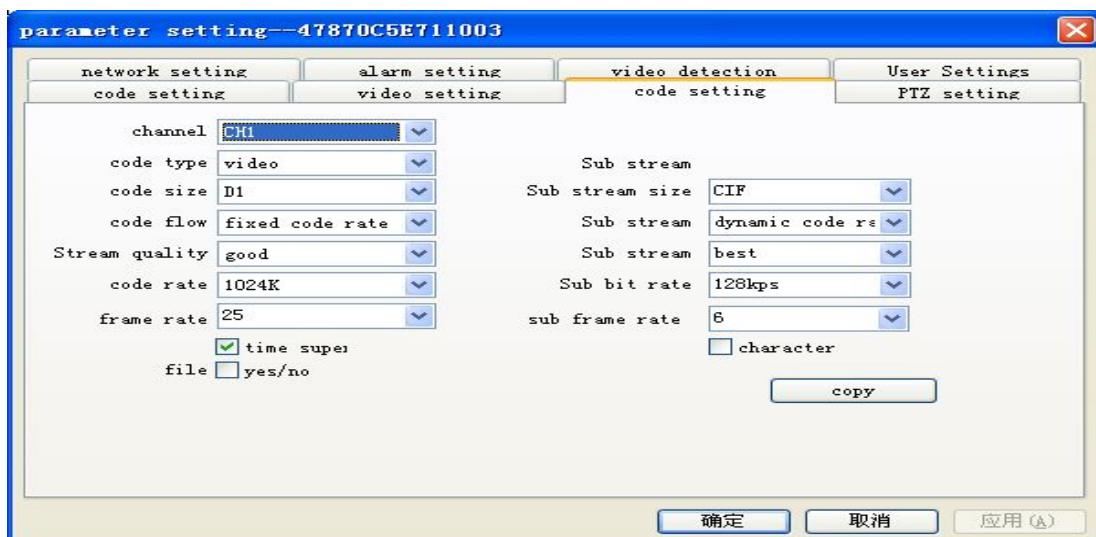
[**Full HDD**] Automatically overwrite and stop video recording for option, video is covered or stop when the hard disk is full.

[**Video length**] Custom the recording time length by yourself.

[**Channel**] Select the corresponding channel for set

[**Video plan**] Set the recording time slot,only start record when the time is on.

5.6.3 Encode setting



picture 5.20

[**Channel**] Select the channel number .

[**Code Type**] Encoding video and audio two kinds of style.

[**Encoding size**] There are three Optional: CIF, HALF D1 and D1.

[**Stream Control**] Optional flow control limited stream, variable stream. In the variable code stream quality optional 6-speed.

[**Encoding quality**] There are six files available: best, good, good, medium, poor and poor.

[**Rate**] Be set to change the value of the quality of the stream quality in facilities allow, the bigger picture , the better the stream.

[**Frame Rate**] Can be adjusted in real time criteria: P system, 25 frames / sec N system, 30.

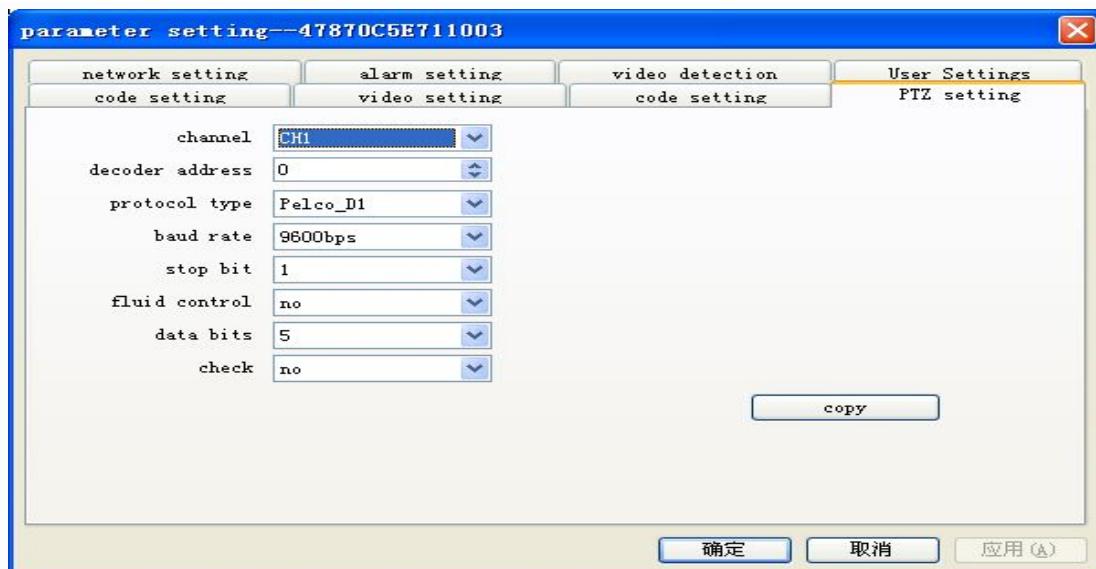
[**File Encryption**] To select "Yes", DVR backup file during playback to play the need for decryption.

[**Time, OSD**] Whether to display the channel name and then select the channel video recording time.

[**Sub-stream information**] Setting sub-stream network transmission sub-stream parameters.

[**Copy**] To copy the current settings to other information channels to other channels.

5.6.4 PTZ Setting



picture 5.21

[**Channel**] Choose the channel which connect the dome camera.

[**Address**] Set the corresponding dome camera address,The default value is 0(Note:this address must same as the dome camera address,or you cannot control it)

[**Protocol type**] Choose the dome camera protocol according to the corresponding brand model(such as :PELCOD)

[**Baud rate**] Choose the corresponding baud rate,then you can control the corresponding Ali cloud and camera,the default value is 9600bps.

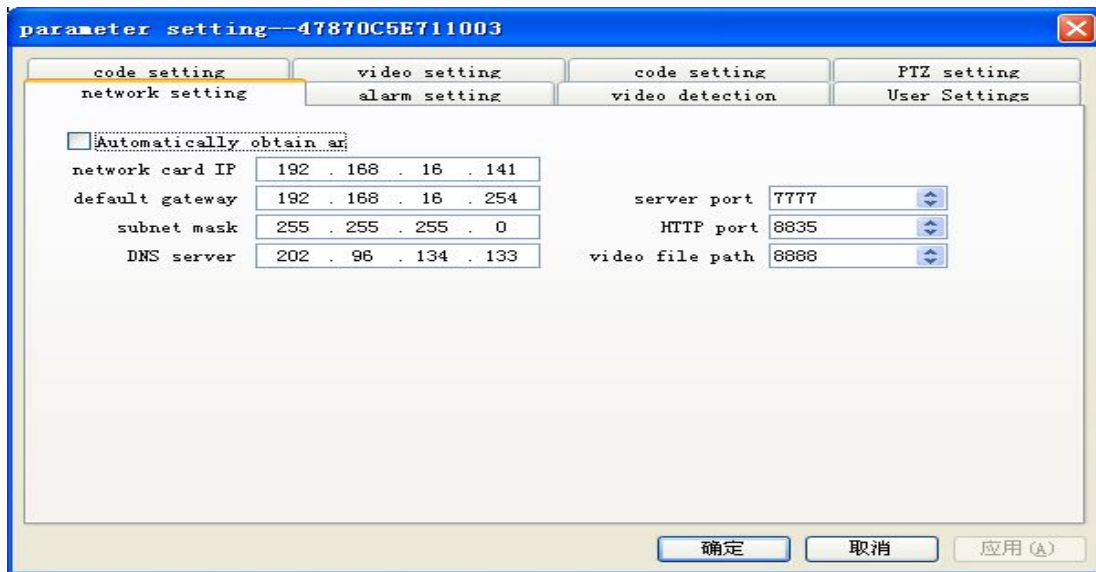
[**Stop bits**] There is 1,2 option,the default value is 1

[**Flow control**] There is hardware,Xon/Xoff,the default value is None

[**Data bits**] 5-8 option included,the default value is 8

[**Verify**] Have odd parity, even parity, mark parity, space parity,the default value is none

5.6.5 Network setting



picture 5.22

[**Obtain an IP address automatically**] Obtain an IP address automatically function(not in Recommend).

[**IP address**] Set the IP address,the default value is: 192.168.1.10.

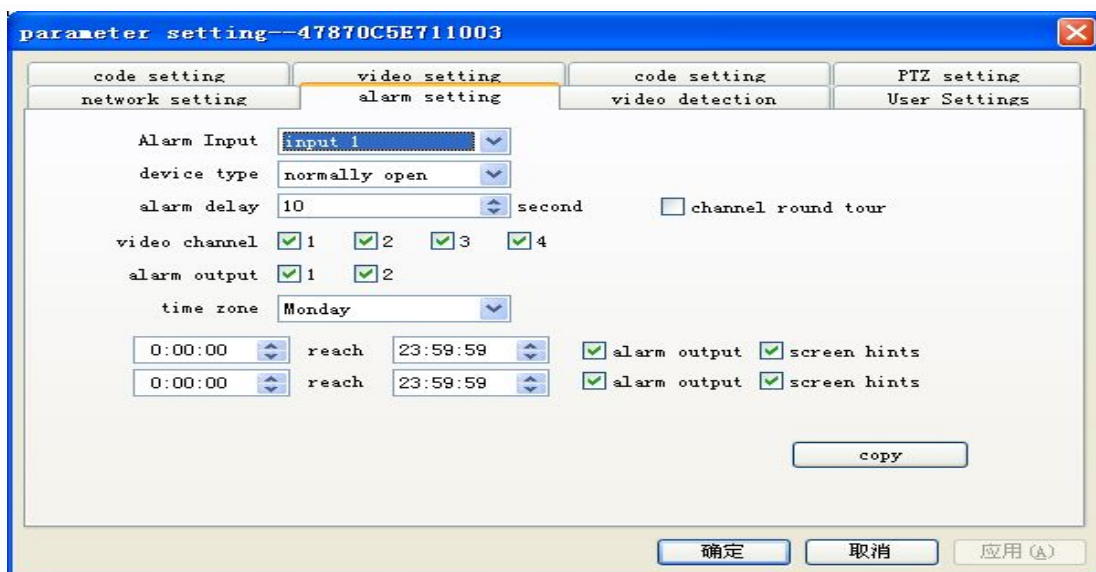
[**Subnet mask**] Set the subnet mask,the default value is:255.255.255.0.

[**Default gateway**] Set the default gateway,the default value is:192.168.1.1.

[**DNS setting**] DNS server,Analyze the domain name to IP address,Network operators offer the address,effected while reset the DVR after the address is setted

[**HTTP port**] the default value is 8835.

5.6.6 Alarm setting



picture 5.23

[**Alarm input**] Select the appropriate alarm channel number.

[**Device Type**] Alarm input normally open / closed type selection (voltage output).

[**Alarm delay**] Set the corresponding delay time (0 to 255 seconds), when the external alarm revoked, the system delay the appropriate time automatically, and then shut down

[**Channel polling**] To select a channel for video alarm signal occurs when the single-screen carousel, carousel set-up time in the [Advanced Options] → [Display] in the local setting.

[**Video channel**] When selecting the desired video channel, when an alarm occurs, the system is in "Auto Recording" mode and "Video Settings" in the "automatic recording" is active period, the system will start alarm recording.

[**Alarm output**] Linkage alarm output when an alarm occurs: I / O output, the screen prompts and other output.

[**Period of time**] In weeks to set the alarm output time period, which means that in the corresponding period of time to allow the alarm output or screen prompts.

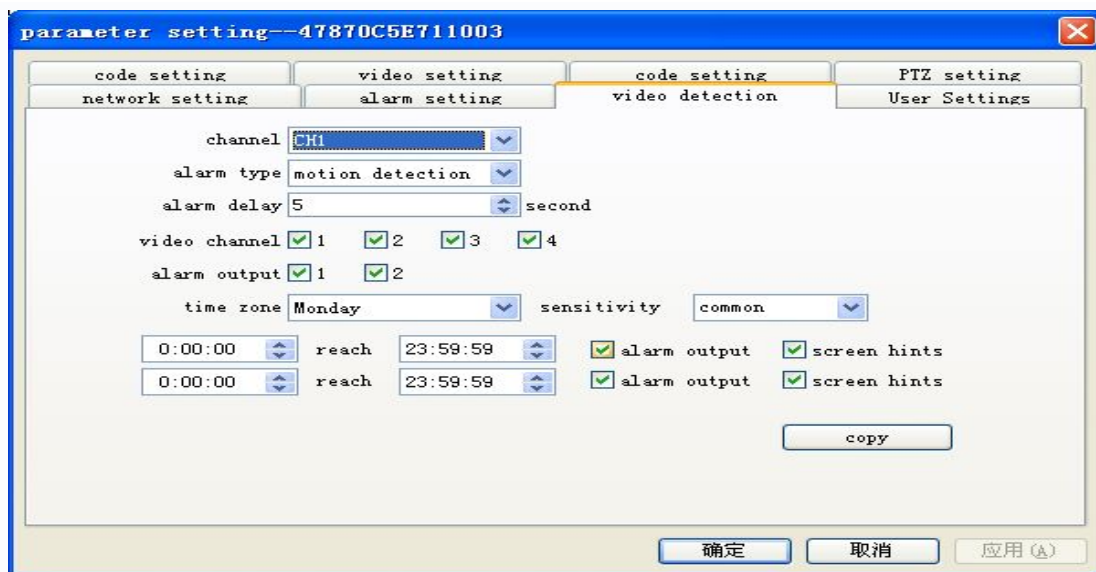
[**I / O output**] In the selection period output, motion detection alarm occurs when the corresponding linkage alarm output device.

[**Screen Tips**] In the selection period screen, the screen prompts alarm occurs when the corresponding information.

[**Copy**] Copy the current channel information to others

★ **Note:** Users need to save each set after the completion of each channel.

5.6.7 Video Detection



picture 5.24

[**Channel**] Select the channel you need to do motion detection

[**Alarm Type**] Select Detect Settings Type: motion detection and video loss.

[**Alarm delay**] Set the alarm delay alarm delay time (5-255 seconds), after the end of the video loss alarm, the system automatically extend the appropriate time, and then turn off the video and linkage output.

[**Video channel**] To select the desired channel recording channel (multiple choice), video motion detection occurs, the system is in "Auto Recording" mode and the "video settings" in the "Auto Record" is an effective period of time, the system will start automatic recording.

[**Alarm output**] Start the corresponding alarm output Alarm output when motion detection occurs.

[**Period of time**] In weeks to set the alarm output time period, which means that in the corresponding period of time to allow the alarm output or screen prompts.

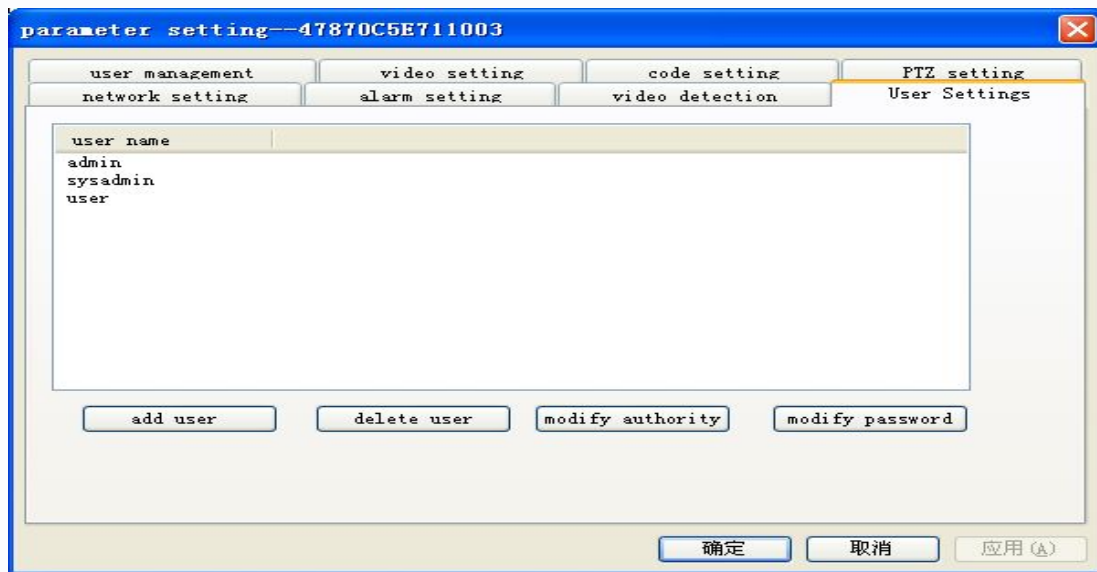
[**Sensitivity**] Can be set to: highest, high, normal, low, lowest.

[**I / O output**] In the selection period output, motion detection alarm occurs when the corresponding linkage alarm output device.

[**Screen Tips**] Screen in the selected time quantum motion detection alarm screen prompts appropriate information.

[**Copy**] To copy the current settings to other information channels to other channels.

5.6.8 user management



picture 5.25

[**Add user**] Add new users and users'right by yourself

[**Delete**] You can only delete new users,can not delete the System Preferences users

[**Modify users'right**] Modify the new user rights, can not modify the System Preferences user rights

[**Modify the password**] Modify all the login password

Chapter VI App on the phone


1. phone system supported

Android &IOS.

2. Installation

click the icon   install the app on the mobile phone.(Take Android system as the example).

3. Launch the App

Found the icon ,click enter into the desk,showed as picture 1.

4. Network landing & SN landing

4.1 Network landing

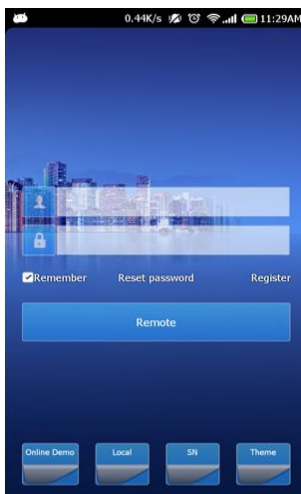
4.1.1.Registration:

Click “Register”full fill the information,showed as picture 2.(If already registered, sign in directly).

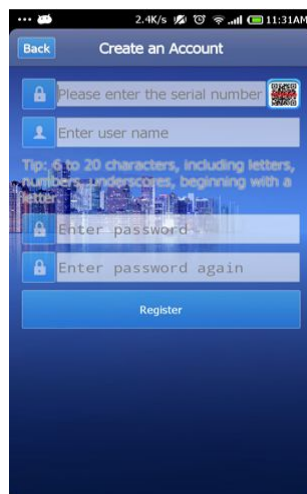
(1) Input machine serial number: Full fill the machine serial number or scan the QR code icon .

(2) Input user name and code: Set up your user name and landing code.

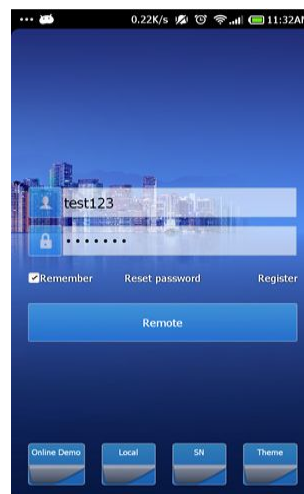
(3) Registration: Click”Register”, after made it successful, full fill the user name and code, click “Remote” could be start monitoring,showed as picture 3.



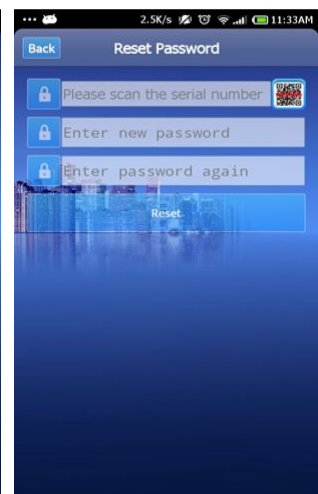
picture 1



picture 2




picture 3



picture 4

4.1.2. Reset the code number

In the page of Reset the code number,click the icon ,scan the QR code to obtain the machine serial number,then input the new code number, click “ Reset “ finish,showed as picture 4.


Attention:when landing via cloud server ,App on mobile phone would download the machine information to the App.

4.2 SN landing

Click “SN ” icon, enter into the landing page,showed as picture 5.

5. Add the remote device

On the device page click "Add" button, enter into device information page, showed as picture 6, then saved the information.

(1) Input the machine serial number. Input the serial number or click the icon  to scan the QR code to obtain the serial number.

(2) Device name. Full fill the information.

(3) User name and code. The user name and code number for landing, such as user name: admin code: 123456 or user name: user code: empty.



picture 5



picture 6









picture 7



picture 8

6. Connect the device

(1) Connect the device. Click the machine information in the list, showed as picture 7, click the icon  then see the remote image.

(2) Show the single image. Click image once enter into single image display, showed as picture 8,  snapshot,  local recording;  speaker, mobile phone with machine device;  full image;  speaker setting.

(3) Amend the device information. Amend the device name, user name, code number, showed as picture 9.

(4) Delete the device. Select "delete", if need to sign in again, please add the device information via mobile phone APP or sever page.

Attention: The user name and the code number were for the DVR landing, such as username: admin code: 123456 or user name; user code: empty, showed as picture 10.



picture 9



picture 10




picture 11



picture 12

7. Photo

Click "Photos" enter into album page, showed as picture 11, photo showed by time line,click ,enter into photo page, showed as picture 12. Click the image to browse the cut picture;Click the "Select" button,Click the "Delete" button to delete the selected pictures,picture 13.



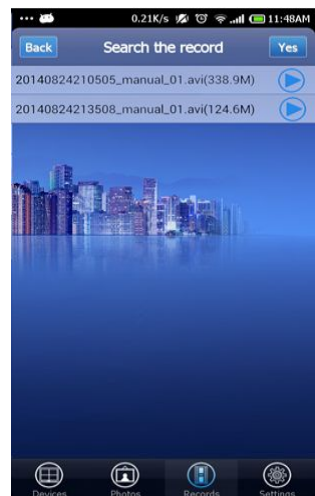
picture 13



picture 14



picture 15



picture 16

8. Video playback:Remote playback and local playback

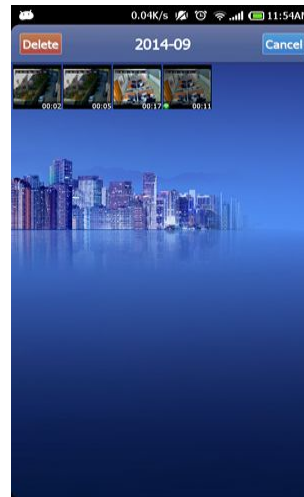
(1) Remote playback Click the information bar machine,Display channel information,Select the remote playback channel entry,picture 14,Into the "Search History" page,picture 15,Select the "video mode" recording start date and time,Date and time of recording off;Set and click "OK",Period of the video file information mobile client will be set out in the page display,picture 16,Select the video file to be played back,Remote playback video files automatically.



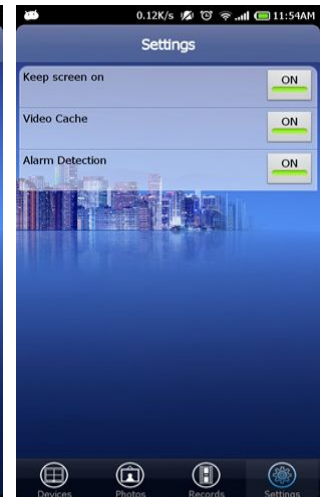
picture 17



picture 18



picture 19



picture 20

(2) Local video: In the "Records" page, Click on the top right of the "local" icon, Into the local video page, picture 17.

1) Video files in chronological classification, Click , Click the video file, Select the video file to play picture 18.

2) Click the "Select" button, Select the video file, Click the "Delete", You can delete the selected video file, picture 19.

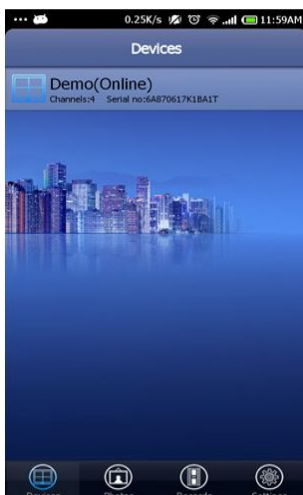
9. Setting

Click the "Settings" icon to enter the setup menu, picture 20.

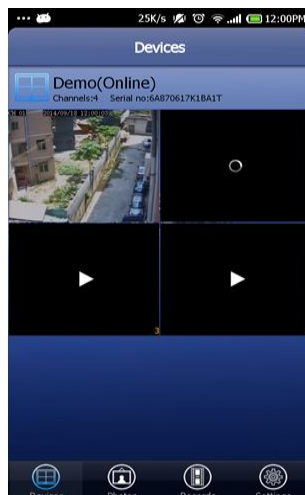
(1) Always keep the screen on : After opening, Mobile client operations running, Phone screen is lit state;

(2) Video Buffer: Close to real-time playback, Open to delay 3 seconds to play, This function access to the host in the WAN is valid.

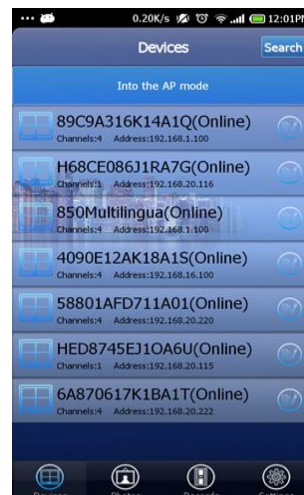
(3) Alarm Detection: Open to the receiving host IO alarm、 Such as motion detection and video loss alarm information, Close to not receive alarm information.



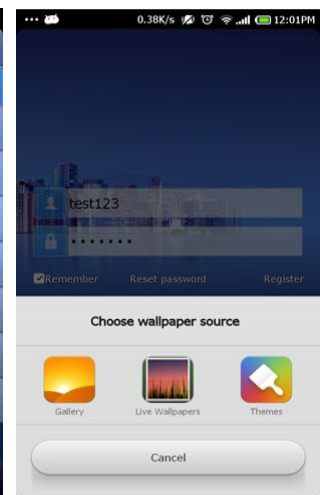
picture 21



picture 22




picture 23



picture 24

10. Remote presentations

Click on "Remote Demo" icon, Enter the online demo page, Click on the list of machine information, picture 21, Click on the window "play button" , Remote connection video, picture 22.

11. Log on locally

Click the "local" icon, Enter the local device page, picture 23, Clients will automatically search for the LAN devices; Click Device Information Article, Select the appropriate channel for playback; If you need to update the LAN machine information, Click on the "Search" icon to search again LAN equipment.

AP and remote mode: Click on the icon on the right side of the device information "", Will pop up "AP" and "remote" option.

"Remote" mode: In "function settings" screen, click "Next", Enter the device information interface, On the device name, Modify the user name and password, After editing, SN device information is automatically saved to the landing page, Enter "SN" page for remote monitoring.

AP mode for IP shaking his head wireless connection mode, Moving machine can refer to the relevant settings.

12. Background:

You can change the phone's background image, Select the phone image as a background image, picture 24.

Chapter VII FAQ and maintenance

7.1 Frequently Asked Questions

If your problem is not the content of the following, please contact your local customer service or call the HQ service, we will be happy to serve you.

1 Q: When turned on, the DVR does not start properly

A: The possible causes:

- 1) Input power is not correct
- 2) Switching Power line contact is not good
- 3) Switching Power Supply bad
- 4) Program Upgrade Error
- 5) hard disk is damaged or the hard-line problem
- 6) Front panel fault
- 7) DVR bad motherboard

2 Q: The hard disk will automatically reboot or frequent crashes a few minutes after starting the VCR

A: The possible causes:

- 1) Input voltage instability or too low
- 2) hard disk has bad sectors or bad hard line
- 3) Switching Power is not enough
- 4) front-end video signal instability
- 5) bad heat, too much dust, the machine is too harsh operating environment
- 6) DVR hardware failure

3 Q: Can not find the hard drive after starting

A: The possible causes:

- 1) HDD power cable is not connected
- 2) a bad hard drive cable
- 3) a bad hard drive
- 4) bad motherboard SATA port

4 Q: single, multi-channel, all video no output

A: The possible causes:

- 1) does not match the correct procedure to re-upgrade
- 2) image brightness have become 0, restore the default settings
- 3) no video input signal or too weak
- 4) Set the path protection (or screen saver)
- 5) DVR hardware failure

5 Q: The real-time image problems, such as video image color, brightness and serious distortion

A: The possible causes:

- 1) made with BNC output, N and PAL formats incorrectly selected, the image becomes black and white
- 2) DVR and monitor impedance mismatch
- 3) video transmission distance is too far or too much video transmission line attenuation
- 4) DVR color, brightness and other settings are incorrect

6 Q: can not find a local video playback

A: The possible causes:

- 1) bad hard drive
- 2) Upgrade the system with the original file different programs
- 3) the video you want to search have been covered
- 4) video does not open

7Q: local query video Huaping

A: The possible causes:

- 1) quality setting too low
- 2) program data read errors, the small stream display, full screen playback mosaic, general machine shutdown restart normal
- 3) hard drive data cable and jumpers error
- 4) hard disk failure
- 5) Machine hardware failure

8 Q: No sound monitoring

A: The possible causes:

- 1) are not active pickups
- 2) is not active stereo
- 3) audio cable is broken
- 4) DVR hardware failure

9 Q: monitor sound, no sound playback

A: The possible causes:

- 1) Setup: Audio option is not open
- 2) corresponding channel is not connected to video, image blue screen, playback will be choppy

10 Q: The time display error

A: The possible causes:

- 1) Set the error
- 2) The battery is bad or low voltage
- 3) Crystal bad

11 Q: DVR can not control PTZ

A: The possible causes:

- 1) front head failure
- 2) PTZ decoder settings, connections, installed incorrectly
- 3) Incorrect wiring
- 4) PTZ DVR is not set correctly
- 5) PTZ decoder and DVR protocol mismatch
- 6) PTZ decoder and DVR address does not match
- 7) When connected to a plurality of decoders, PTZ decoder AB line farthest need to add 120 ohm resistor to eliminate reflections and impedance matching, otherwise it will create
- 8) is too far away

12 Q: motion detection does not work

A: The possible causes:

- 1) the time period set incorrectly
- 2) Motion Detection locale inappropriate
- 3) low sensitivity
- 4) individual versions of hardware limitations

13 Q: WEB client or can not log in

A: The possible causes:

- 1) The client can not be installed or not display properly operating system is win98 or win me: The operating system update is recommended to win2000sp4 or later, or install a low version of the client software
- 2) ActiveX control is blocked
- 3) No dx8.1 or later installed, upgrade the video driver
- 4) network connection failure
- 5) Network Setup
- 6) with name and password is incorrect
- 7) client version does not match the version of the program with DVR

14 Q: Is there a mosaic or no network preview image and video file playback

A: The possible causes:

- 1) network flow is bad
- 2) whether the client resource constraints
- 3) The machine settings area shelter or channel protection
- 4) users are logged no monitoring authority
- 5) The machine output DVR real-time image on the bad

15 Q: The network connection is unstable

A: The possible causes:

- 1) network instability
- 2) IP address conflicts
- 3) MAC address conflicts
- 4) a computer or DVR card bad

16 Q: Burn / USB backup error

A: The possible causes:

- 1) and hard disk recorder with a data line hanging
- 2) the amount of data is too much CPU resource, please stop recording before backup
- 3) the amount of data exceeds the capacity of the backup device, can cause burning error
- 4) backup device is not compatible
- 5) backup equipment damage

17 Q: The keyboard can not control the DVR

A: The possible causes:

- 1) DVR serial port settings are incorrect
- 2) Incorrect address
- 3) When connected to multiple converters, power shortage, the need to supply each converter
- 4) Transmission distance is too far

18 Q: The alarm signal can not disarm

A: The possible causes:

- 1) alarm settings are incorrect
- 2) manually open the alarm output
- 3) Enter the equipment failure or improperly connected
- 4) Individual version procedural issues, the upgrade process can be resolved

19 Q: The alarm does not work

A: The possible causes:

- 1) alarm settings are incorrect
- 2) Incorrect wiring alarm
- 3) alarm input signal is not correct
- 4) an alarm device to simultaneously access two loops

20 Q: The video store is not enough time

A: The possible causes:

- 1) the poor quality of the camera, the lens is dirty, backlit installation, aperture lens is not adjusted stream caused by the relatively large
- 2) Hard disk capacity is not enough
- 3) there is damage to the hard disk

21 Q: The download file can not be played

A: The possible causes:

- 1) The player is not installed
- 2) or later is not installed DX8.1 graphics acceleration software
- 3)to AVI format with MEDIA PLAYER after playing computer plug-in installation is not Div X503Bundle.exe
- 4) win XP operating system to be installed plugins DivX503Bundle.exe and ffdshow-2004 1012. exe

7.2 maintenance

dust on the circuit board can cause a short circuit in the damp, affecting the normal work even DVR DVR damage, in order to make the hard Disk recorders long-term stability, regularly with a brush on the circuit boards, connectors, fans, chassis, etc. Dust.

Please ensure that the project is well grounded, so video and audio signal interference, while avoiding the DVR is static or induced voltage loss

audio and video signal lines and RS-232, RS-485 interfaces, please do not hot plug, otherwise easily damage these ports.

Do not use the TV output on the local hard disk video recorders (VOUT) of the interface, or easily damaged DVR ,A video output circuit.

hard disk recorders shut down, do not turn off the power switch, use the menu shutdown function, so the DVR automatically shut Off power to prevent damage to the hard disk.

Please keep the DVR away from the high-temperature heat sources and places.

Please keep the DVR ventilated around, in order to facilitate heat dissipation. Perform system checks and maintenance on a regular basis.

Appendix 1 Mouse

This device supports USB mouse interface. Note: * This document using the mouse to the right habits for example

Operating	Function
Double-click the left mouse button	When video playback, double-click an item in a list of video files, playback of the video clips.
	Double-click the playback image is enlarged or reduced screen capabilities.
	When the preview page, double-click on a channel, click on the full screen of the channel. Double-click again to restore the multi-screen.
Click the left mouse button	In the menu page, select the appropriate function key.
Right-click	When the preview page, pop-up desktop shortcut menu. In the menu operation, the current function key shortcut menu.
Mouse movement	Select an item currently under the control or coordinate the move.

Appendix 2 hard disk capacity calculation

DVR initial installation to determine whether the hard disk installed in the machine, should pay attention to when IDE hard disk jumper installed;

1, the size of the hard drive's own capacity

VCR is no limit to the capacity of a single hard disk, you can choose more than 10G hard drive. For better stability, we push Recommend using 120G ~ 250G size of the hard disk.

2, the total capacity size selection

Hard disk capacity is calculated as follows:

Similarly, we can get the formula recording time:

Recording time (hours) = The total hard drive capacity (M)

Number of occupied disk space per hour (M / hour) × channel

DVR using MPEG4/H.264 compression technology, which itself is quite large dynamic range, and therefore need to calculate hard drive capacity Stream statistics for each channel based on the valuation generated file size per hour.

For example:

With a 500G hard drive, CIF real-time video quality, you can record about 25 days. Single-channel recording in an hour Space for 200M / hour, the number of days using a 4-channel CIF real-time video quality 24 hours continuous recording of: $500G / (200M / \text{hour} * 24 \text{ Hours} * 4 \text{ channels}) = 26$.

Caution:

Do not place heavy objects on the device;

Do not let any solid or liquid fall into or penetrate the device;

Disconnect the power and unplug the plug while not using it for a long time

Do not demolition, repair or replacement parts to this equipment by yourself.

Operating environment:

Placed in the temperature of 0 ~ 40 ° C and use this product, avoid direct sunlight or near heat sources;

Do not install this equipment in a wet environment;

Do not expose this equipment to smoke, dust environment;

Do not drop machine and avoid strong collision

Please keep the product installed in a stable place, pay attention to prevent this product to be dropped;

Installed in a well-ventilated place, do not block the vents of this product;

Can only be used within the rated input and output range