

4.“Client software” is optional software If you need to install.You can find the help documents in the software installed.

5.After install the software successfully, you will see the shortcut in your PC desktop. Double click it to run the software.



MV360

Finally, thank you for choosing our product. You can find more help documents in the software CD and you can also get the help when you run the software by clicking the “help” button.

The most powerful and convenient tools for the surveillance
in the world.

USB DVR

User Manual

Before operating the unit, please read this manual and retain it for future reference.

Thank you for using our 4-Ch/8Ch Real-time USB 2.0 video capture device. Please make sure your operations of the products are strictly in accordance with this manual, so as to keep the stability of the digital surveillance systems.

- 1.Introduction
- 2.Special Notice
- 3.Specification
- 4.System Requirements
- 5.Hardware installation
- 6.Software installation

Introduction

USB2.0 high speed Video Capture devices is a new and powerful product that support the Hot-plugging. It's very convenient for user to install and uninstall and, especially for laptops. This device has a wide range of applications, such as home surveillance system, video capture and so on.All video channel are realtime.

Specatial Notice

- 1.How to use the software, please refer to the electronic manal in the CD-ROM.
- 2.Make sure your computer has USB 2.0 high speed(480Mbps) support. You can check wether your computer has this capability the hardware management. Open "Control Panel->Administrative Tools->Computer Management?" If your PC has USB2.0 high speed support, you will see a "Enhanced Host Controller" in the "Universal Serial Bus Controllers" list.



Just like the picture above, the last item show the PC support the enhanced host controller.

- 3.To prevent non-image display, please connect cameras to our USB device and power on the cameras, before installing USB device to your computer.
- 4.If you need to remove the USB device, please plug out the device directly, our and device support hot plug and play.
- 5.You can use multiple USB devices in your PC if your PC has more than one USB 2.0 high speed controller. All the video channel can have realtime performance.
- 6.In case of problems, please contact with Local Technical Support for professional help.

Specification

Model Name	Easy USB DVR
Video Format	PAL/NTSC
Audio Cannel	4-Ch
Frame Rate	4-Ch 100fps(PAL)/120fps (NTSC) 8-Ch 200fps(PAL)/240fps(NTSC)
Data Format	H.264
Network support	Support TCP/IP, UPNP
Mobile Termial Support	iPhone, iPad, Android
Web Support	IE browser remote surveillance

System Requirements

Item	Request
Screen Set	Above 800*600
DirectX	DirectX 8.0 or above
RAM	512MB or above
USB Interface	USB 2.0 High Speed
OS	Windows7, Windows XP

Hardware installation.

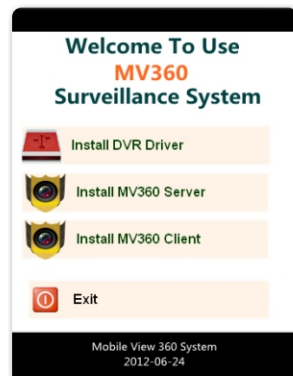


1. Connect the USB device to computer/laptop. To support remote surveillance, your computer/laptop should have the access to internet.
2. The BNC part is for video input, which receives the video signals from the cameras.

3. The RCA port is for audio input, which receives the audio signals from the devices such as MIC.
4. Running the software that you have installed in your PC.

Software installation.

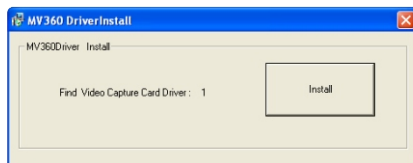
1. Plug the device in the USB port on your PC. Then run the "DVR_Setup.exe" file in the CD-ROM. Then the installation form will be launched.



Notice: You can also get the installation file from

<http://www.mv360.net>

2. We install the driver first. Click the "Install DVR Driver" button. The driver and a window will be opened. And you will see how many USB devices have been found by software. Click "Install" to install the drive for all USB devices.

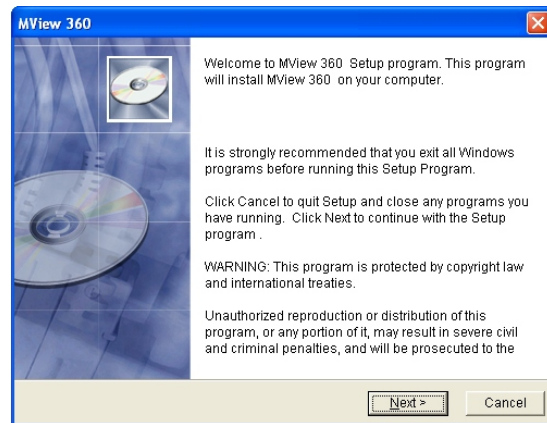


Below window will be displayed. Click "Continue Anyway" to install the driver.

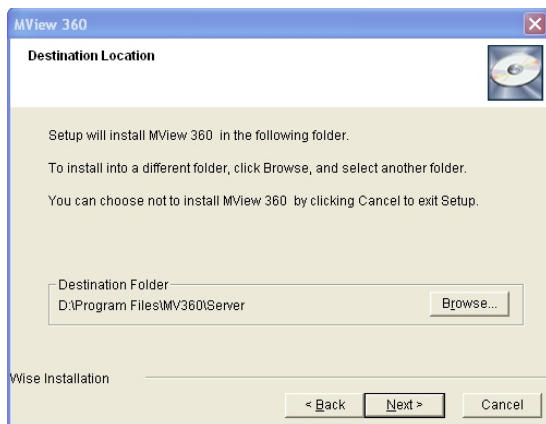


Notice: If you plug our device in another USB port of your PC. Please reinstall the driver like this to make the device work properly.

3. After you have installed the driver. Please click "Install Mv360 Server" to install the server software in your PC. Then the install process will start.

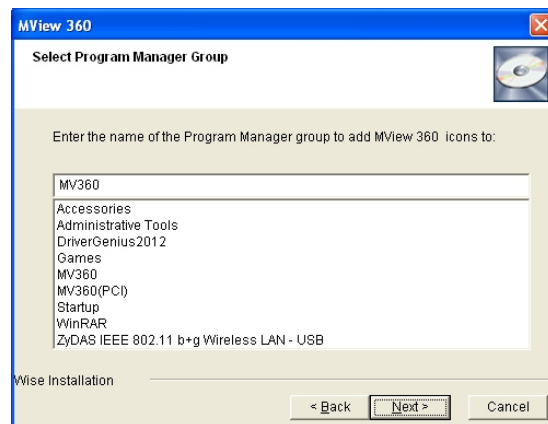


Step 1



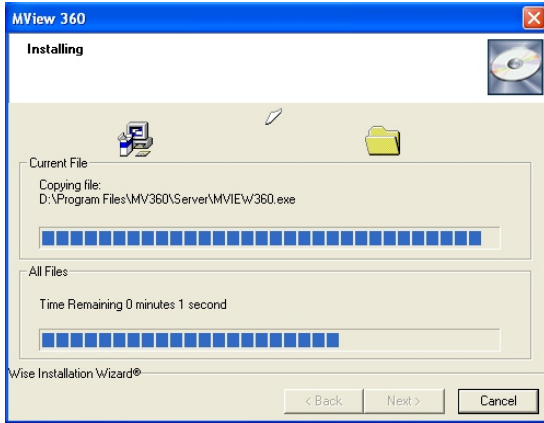
Step 2

You can choose the directory you want it be there and click "Next" to continue.



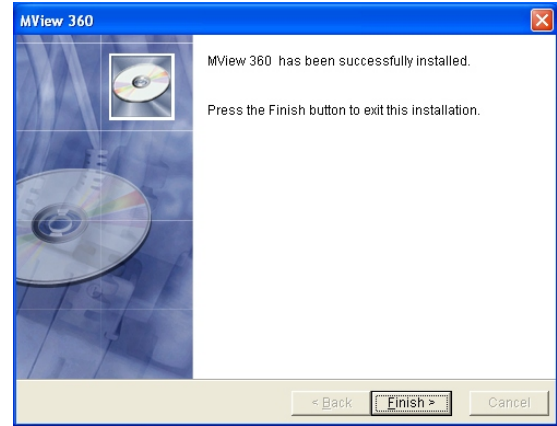
Step 3

You can revise the program group name if you want here. Then click the "Next" to continue.



Step 4

File Copying...



Step 5

This is the last step for the installation. Congratulations. Click "Finish" to complete the installation.