

## 1. Description

TEMPer1F thermometer is a measurement device using USB port to connect to a computer. It has a outer sensor with waterproof functions. It can measure the temperature of the machine and the environment accurately. It must be connect to the computer to start working. TEMPer1F can be use in computer room, weather, environment and special environment temperature testing.

## 2. Function & Feature

- Range of measuring: TEMPer1F: -40~+125 C; -104~+257F;
- Resolution rate: 0.06C
- Precision:  $\pm 2C$ ;
- Electricity:< 5mA;
- Support Windows NT,XP, VIST;Wind7, Wind8
- Memory requirement: 20M
- Data auto save to be txt Or csv form, can be open by excel;
- Send mails function
- Graph transfer function

## New Function

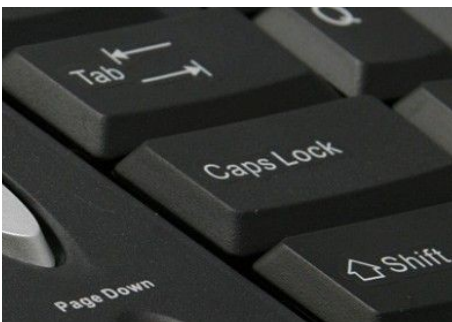
### (1) TXT Special button:

As long as you long pressing the **TXT button** for 1 seconds, you can read the temperature no matter in excel, text or word form without running software. If to stop the reading, press the **TXT button** again . Easy operation! Solve your installed software and cross-platform used troubles!

### (2) Caps lock and Num Lock:

You don't want to install software, OK! You can use the Caps lock and Num lock function.

As long as you long press the caps lock or num lock for 3 seconds, you can read the temperature no matter in excel, text or word form without running software. Then you can create curve.



CAPS LOCK:ON/OFF/++ FW:1.3			
NUM LOCK:OFF/ON/-- UNIT:C			
DATE	TIME	INSIDE	OUTSIDE
2012-9-17	17:27	31.81	31.69 1S
2012-9-17	17:27	31.81	31.56 1S
2012-9-17	17:27	31.81	31.63 1S
2012-9-17	17:27	31.81	31.56 1S
2012-9-17	17:27	31.81	31.63 1S
2012-9-17	17:27	31.81	31.69 1S
2012-9-17	17:27	31.81	31.63 1S
2012-9-17	17:27	31.81	31.63 1S
2012-9-17	17:27	31.81	31.63 1S
2012-9-17	17:27	31.81	31.63 1S
2012-9-17	17:27	31.81	31.63 1S
2012-9-17	17:27	31.81	31.63 1S
2012-9-17	17:27	31.81	31.69 1S
2012-9-17	17:27	31.88	31.56 1S
2012-9-17	17:27	31.88	31.63 1S
2012-9-17	17:27	31.88	31.69 1s

**(3) PCsensor USB series products, can be used on the mobile phone through OTG interface line.**

# TEMPer1F



Q1: What are these products mainly include?

A: TEMPer2 ,TEMPerNTC, TEMPer1F, TEMPer1F\_H1, TEMPerHUM, TEMPer1K3, TEMPer1K4, TH1000 ISO, TEMPerF, TEMPe8 series (TEMPer8\_D2, TEMPer8\_D4 TEMPer8\_D8,TEMPer8\_H2 TEMPer8\_H4, TEMPer8\_H8 TEMPer8\_T2, TEMPer8\_T4, TEMPer8\_T8, etc.)

Q2: what are the common OTG interface of mobile phone?

A: millet, samsung, etc.

Q3: how to validate if your mobile phone is in line with the OTG?

A: Use OTG line connecting a mouse or keyboard, see if the mouse is normally used in conformity with the OTG.

### 3. Installing instruction

Software installing instruction: please go to our website to download the process

- a) Uninstall the USB driver
- b) Install dotnetfx.exe, if your computer system is Vista, maybe you don't need to

install this process. Dotnetfx.exe is framework 2.0 of Microsoft, you can download it from the website of Microsoft;

c) Decompress TEMPerV24.4.rar to you computer, and running TEMPerV24.4 setup.exe.

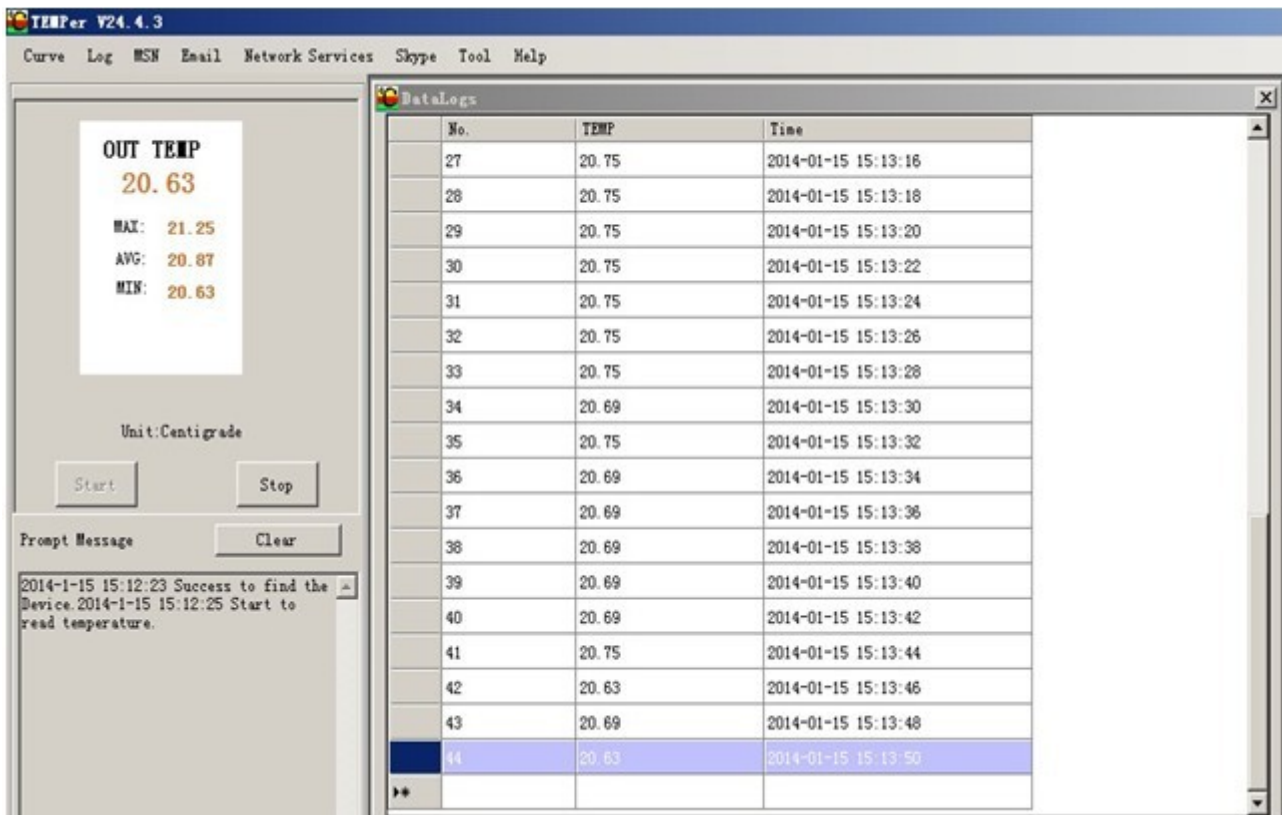
Hardware installing:

Plug the thermometer into the USB port of the computer to connect it and running the TEMPerV24.4.exe.

4. Operating instruction **(Note: Our software only support windows system .)**

### 1) LOG

Record the Real-time Temperature Data and Save Them in the Related File Automatically. (see picture4)

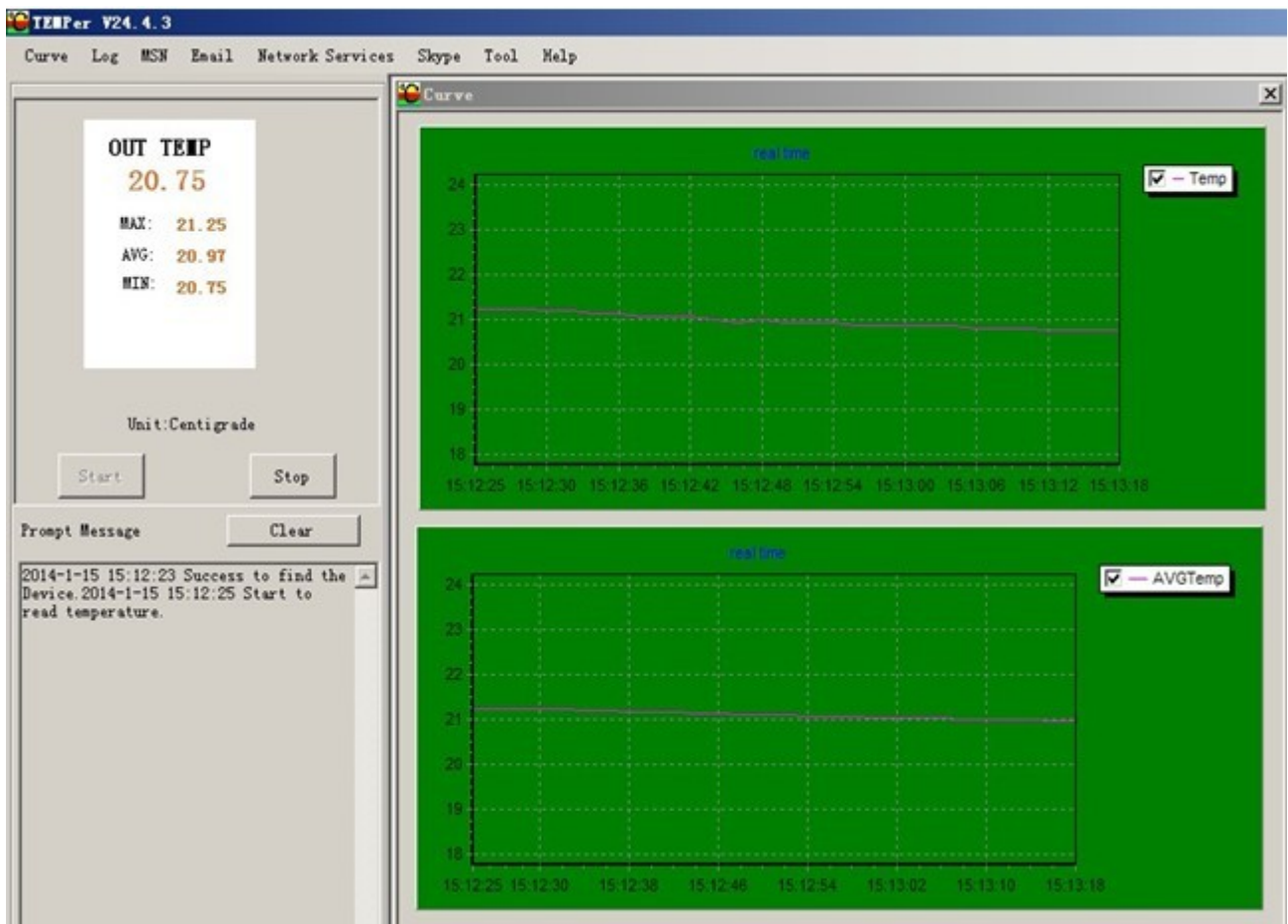


Picture 4 LOG

### 2) CURVES DISPLAY

There is Two Curves, One is AVG Line and the Other is Current Line. The User can Check the Situation of Temperature Contrastively. The Curves can Real-time Display the Changing Situation of Temperature. The Tendency of Curves Responds the Real-time Temperature Situation. (see picture3)

ADVISE: Please Check the Log or Data File in Save Contents When You Want to Check the Historical Data.



Picture 5 Curve

### 3) MSN FUNCTION

After the MSN User Log in, His Friends can Operate by Related Tips and Obtain the Temperature Data. Your Friends can obtain the Temperature Data Automatically When He Send "1" in According with Tips. The Temperature Data Including: Real-time Temperature, Maximum Value, Minimum Value and Average Value. (see picture 5)





Picture 6 MSN

## 5) EMAIL FUNCTION

Fill in the Related Information of Email and Save it. The Requirement of Send Email: Support POP3/SMTP and Other Server Port. Receive Email you can fill in two.

Related Function: 1) when the Alarm is on, it will send the Email to Specified Email Box Automatically if the Temperature Reach the Alarm Limit. 2) You can set the Sending Interval, and then it will send the Email to the Specified Mail Box at Set Intervals. (Advise) 3) it can Send Email Continuously to the Specified Mail Box. (Deprecated feature) (See picture 7)

The screenshot shows a software window titled "Email" with the following sections:

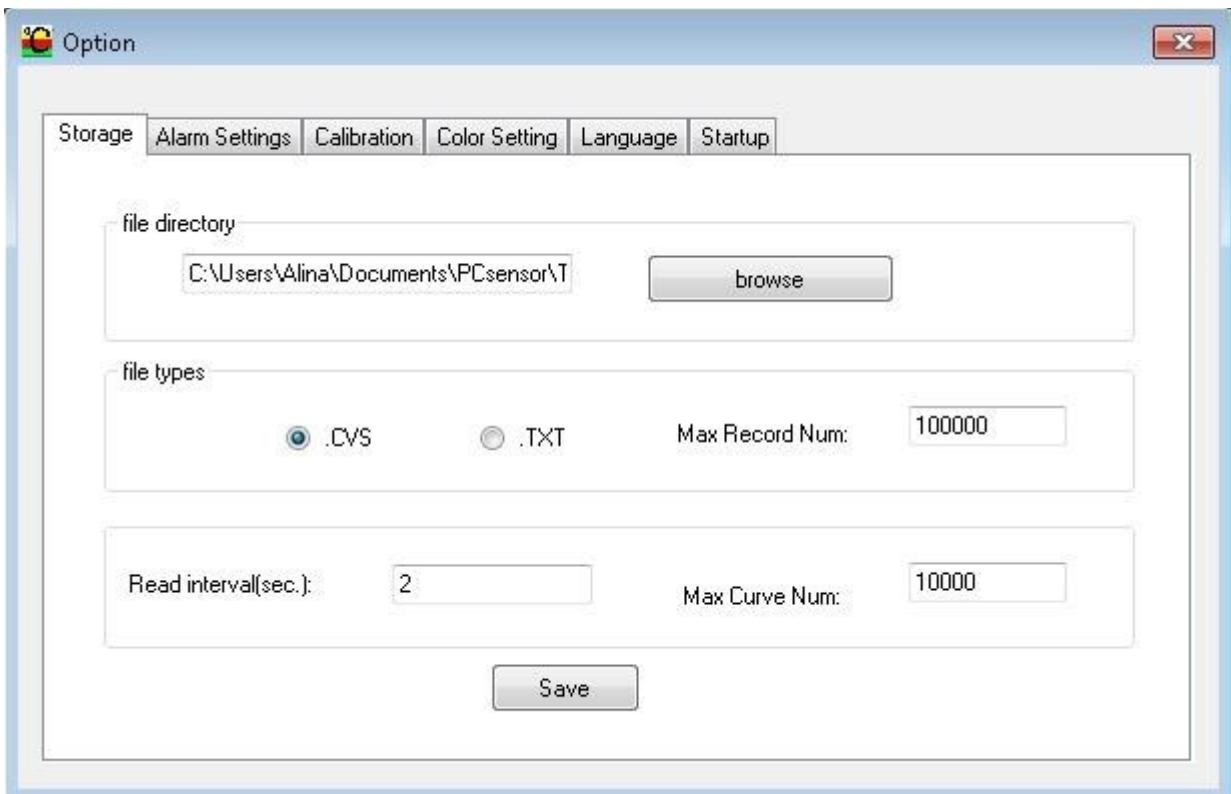
- Transceiver mailbox setup:**
  - Email address: pcb @ pcsensor.com
  - User Name: pcb@pcsensor.com Password: [masked]
  - SMTP: mail.pcsensor.com SMTP Port: 25
  - Subject: [empty field]
  - Add remarks: [empty text area]
  - send interval: 9000 Millisecond 9 seconds
- receiver email:**
  - TO 1: 603900776@qq.com Name 1: [empty field]
  - TO 2: [empty field] Name 2: [empty field]
  - [Save button]
  - email send enabled
- send mode:**
  - when alarm
  - continuous
- succeed rate:** 5/5
- remaining time:** [Progress bar] 9 s
- email running...

Picture 7 Email

## 6) THE SAVING SETTING OF FILE

Select "Tool->Option->Memory Setting" then you can Set the Saving File Catalog, File Type and the Maximum Record

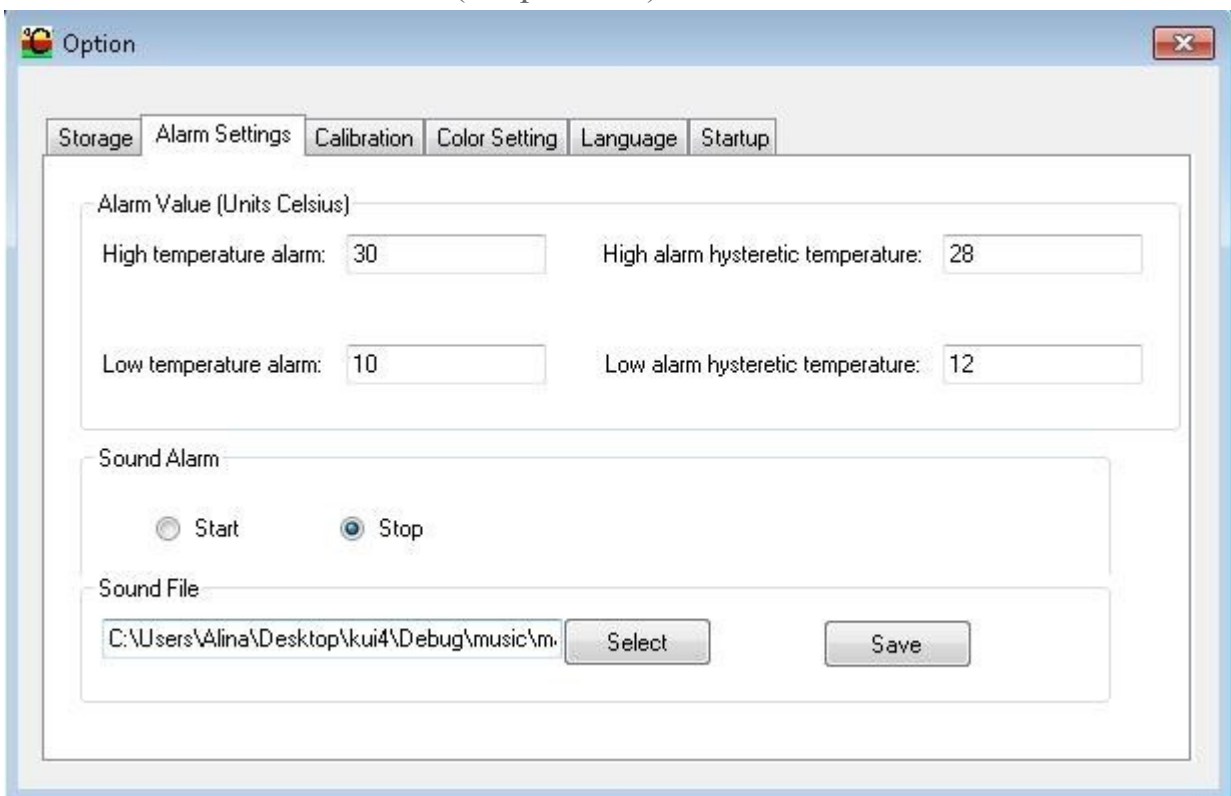
Count the File can Save. (see picture8)



## 7) THE ALARM SETTING

Set the Temperature of Alarm and Open it. When the Temperature Reach the Higher Limit, the Voice of Alarm will Play, and it will Stop when the Temperature Drop to the Lower Limit.

Select "Toll->Select->Alarm" (see picture 9)

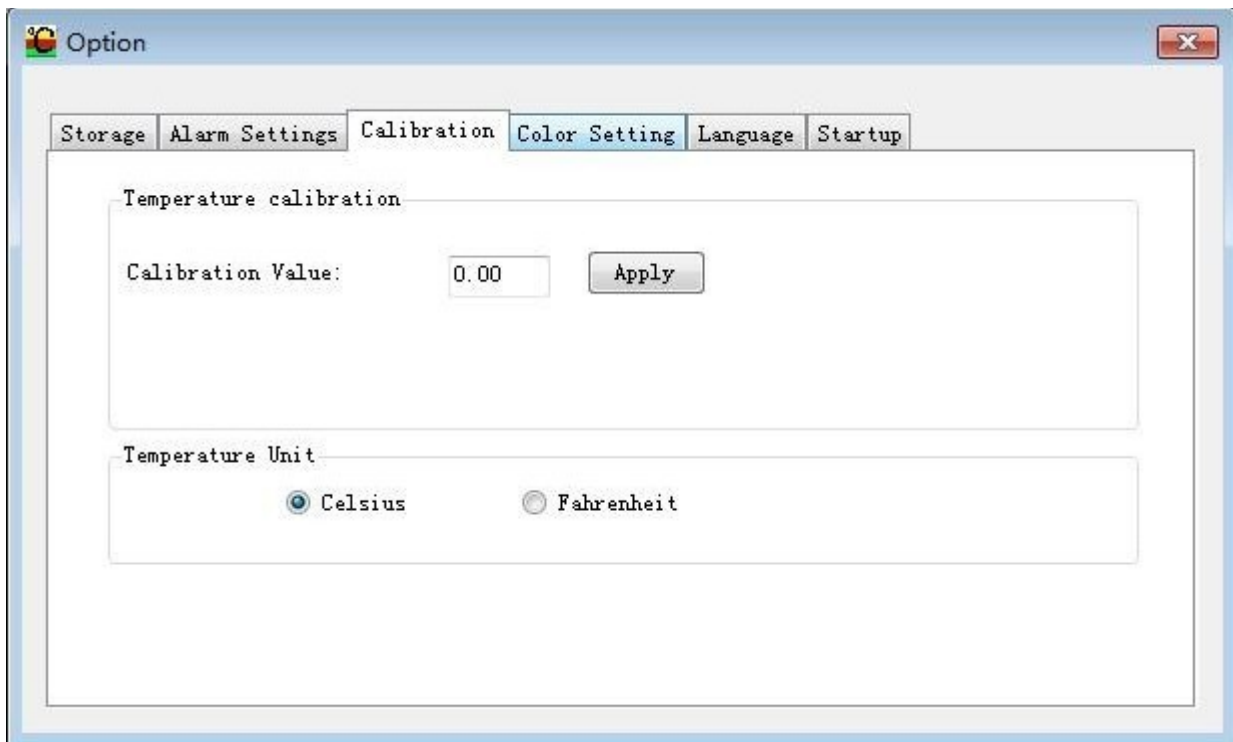


See picture 9



## 8) TEMPERATURE CORRECTION and UNIT SELECTION

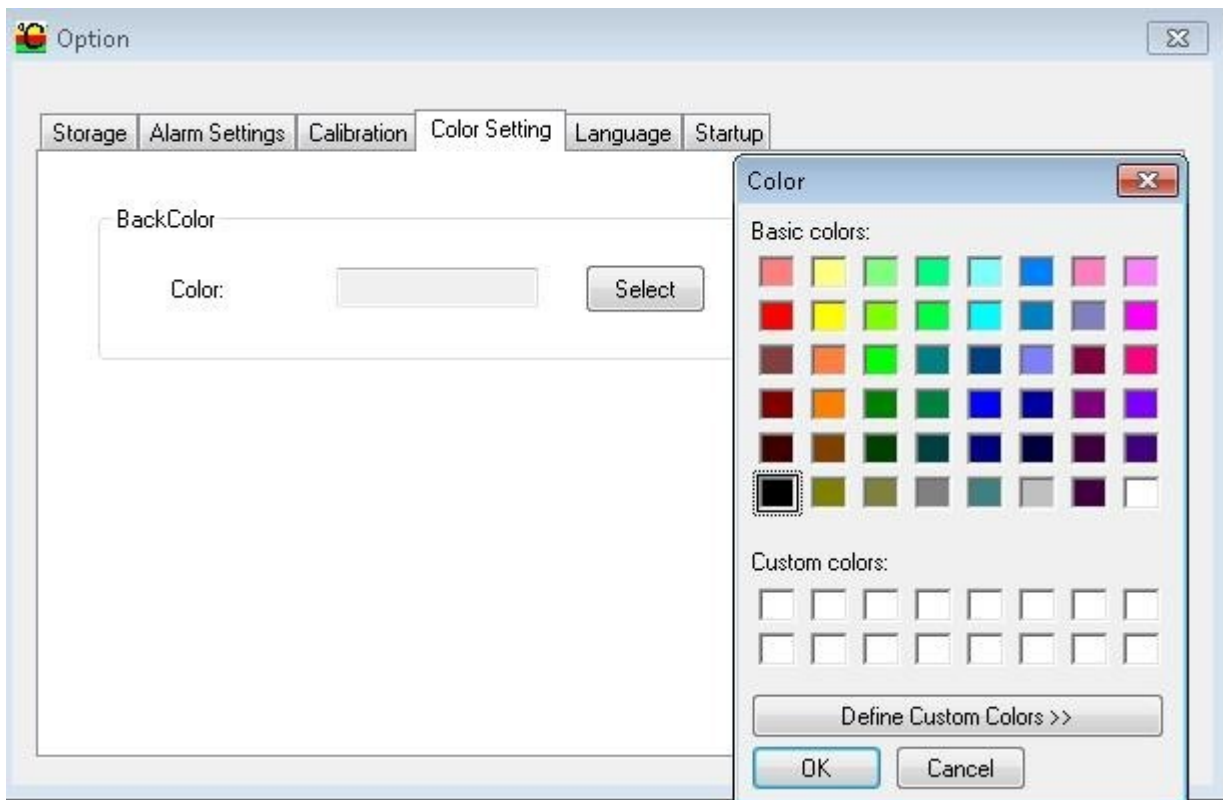
When a Small Deviation occurs between the Displaying Temperature and the Actual Temperature, you can correct it through this Function. And you can select the unit of the temperature. (See picture 10)



See picture 10

## 9) CHANGE THE COLOR OF BACKGROUND

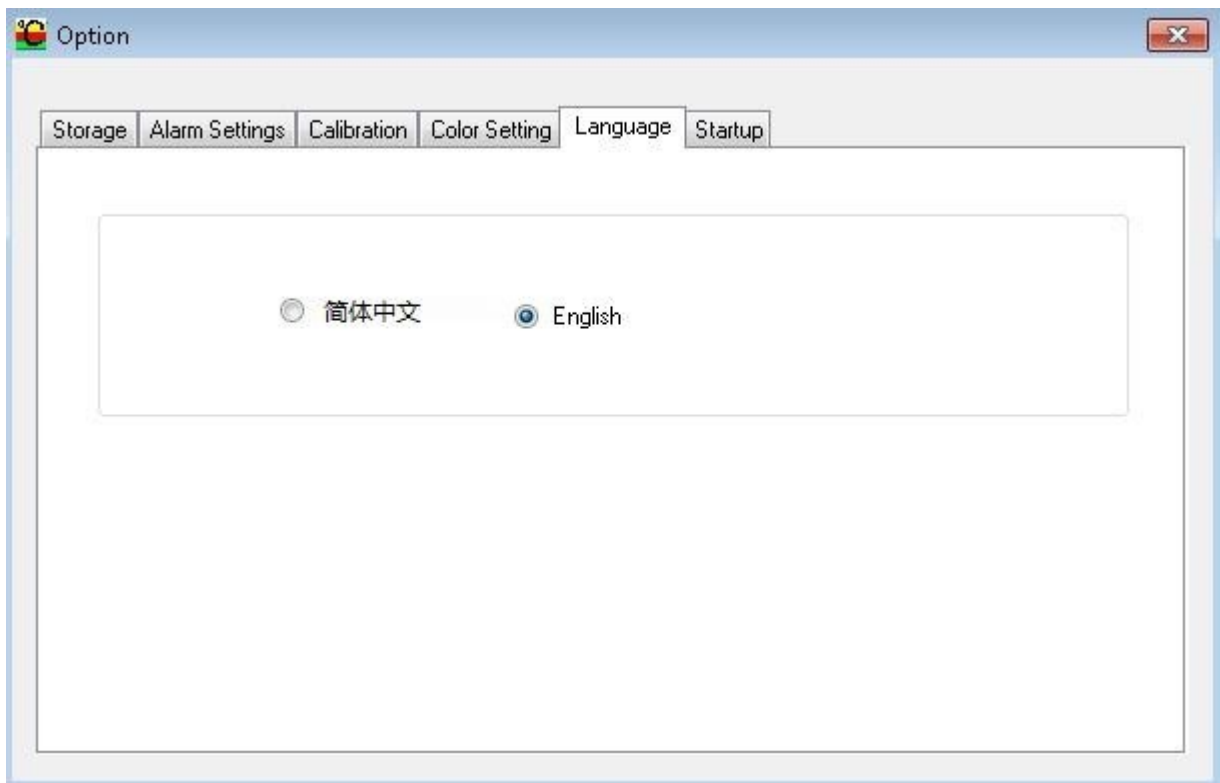
Select "Tool->Select->Color Setting", Click Color Frame or Button to Choose the Color you Like (see picture 11)



See picture 11

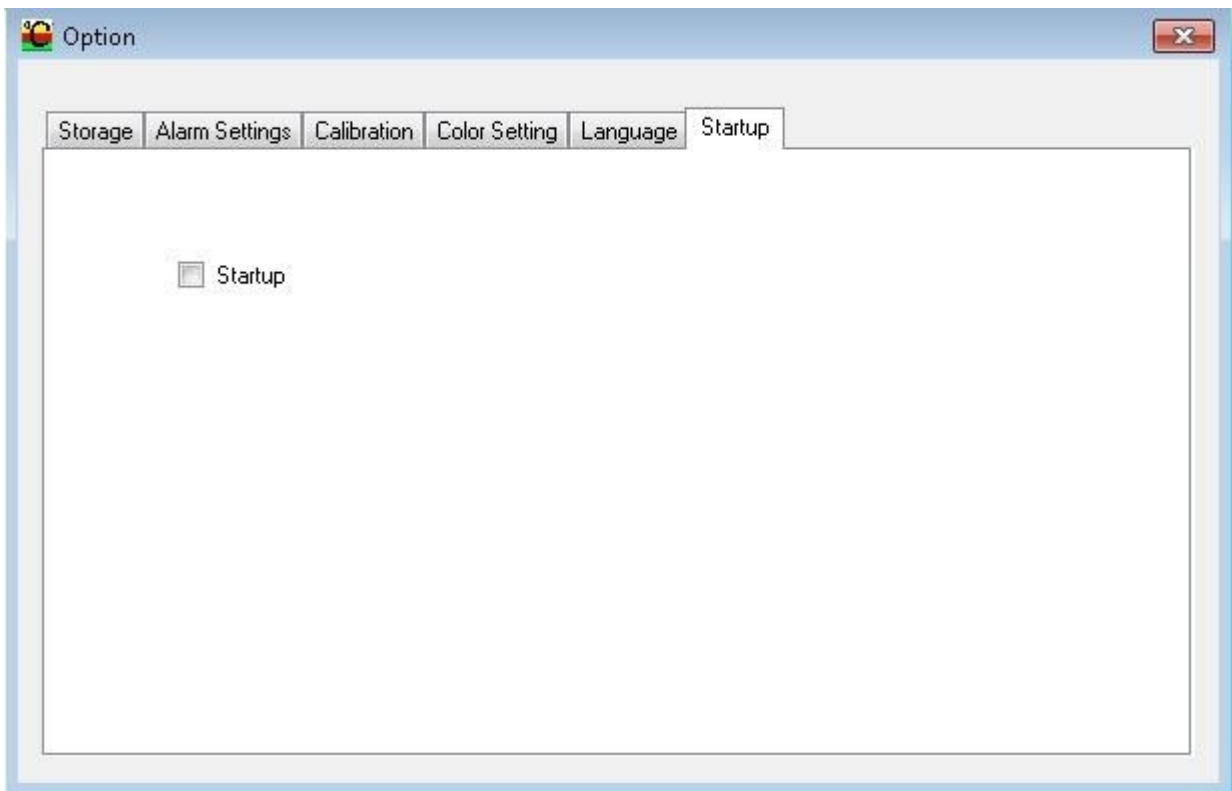
#### 10) CHANGE LANGUAGE

Select “Tool->Select->Language, then Choose English or Chinese” (see picture 12)



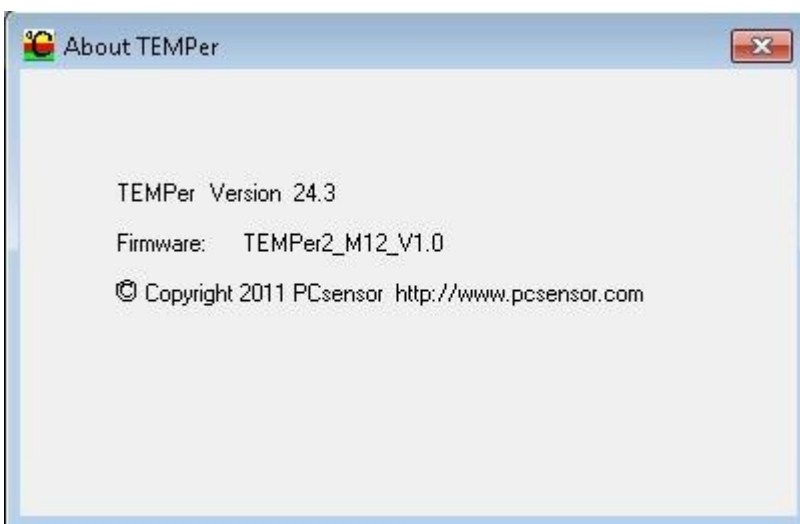
see picture 12

#### 11) STARTUP



see picture 13

## 11) ABOUT



see picture 14

## NOTE

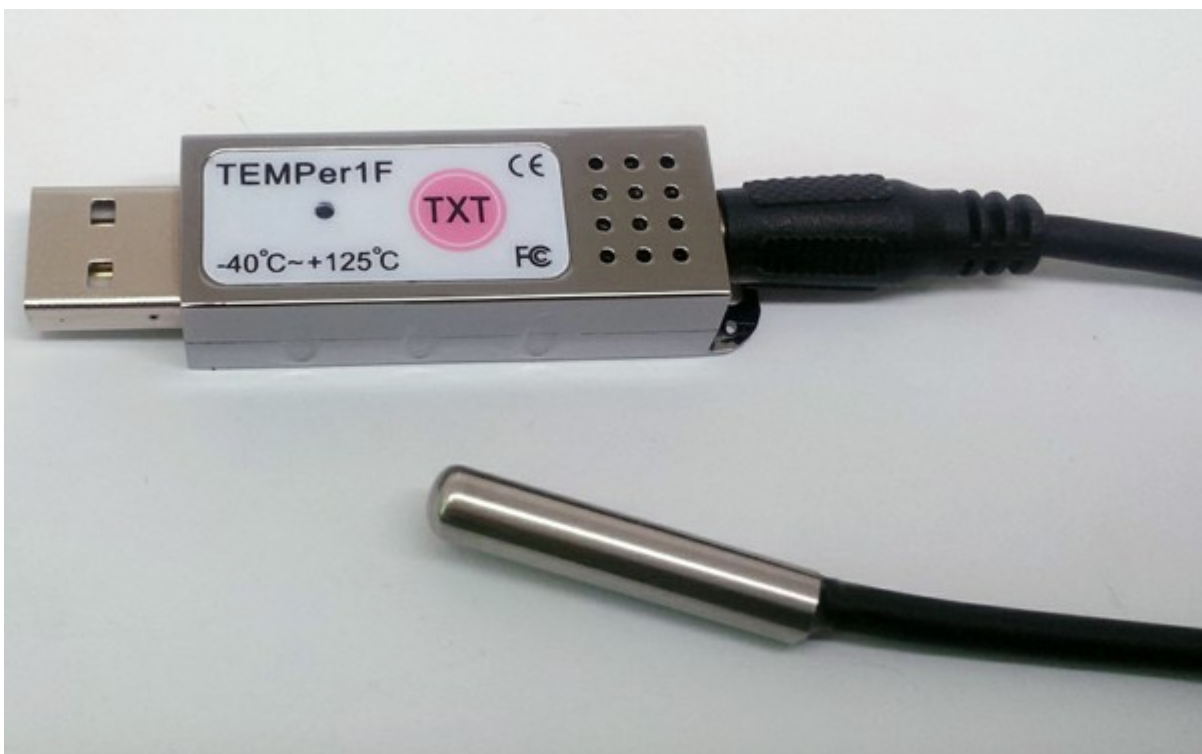
1. We suggest you to Reboot Software after Changing "Memory Setting" or "Unit Setting". It will make sure your Setting can Take Effect.
2. If the Curves Fluctuate greatly, it maybe you do not Reboot Software in Time after

Setting Unit.

### 5. Packing specification

Name of the part	Specification	Quantity
TEMPer1F	70*10*18mm; 30g	1
Driver CD	3.5inch	1
Sensor	cable length : 1m	1
Product Verification Certificate	-	1

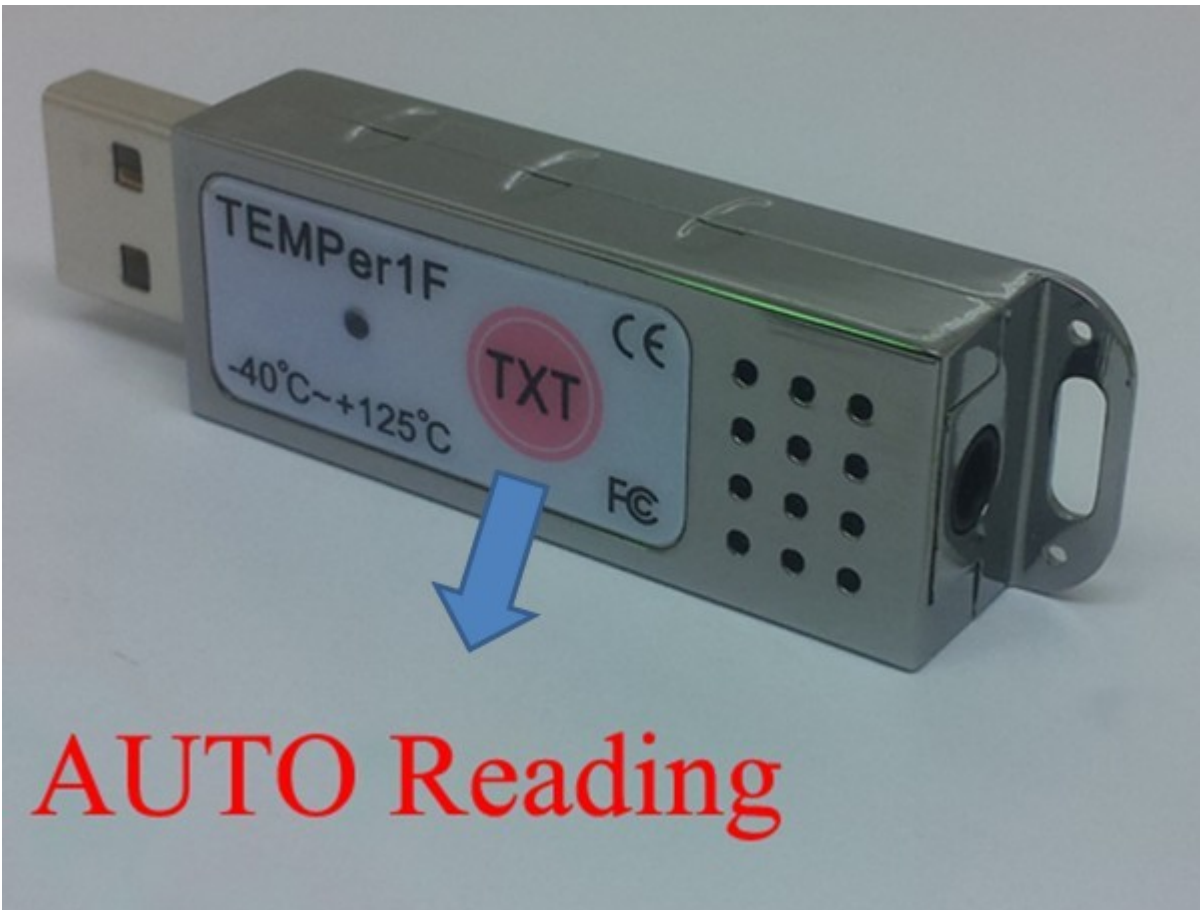
(Weight of TEMPer1F : 70g)



TEMPer1F



TEMPer1F (length of cable is 1meter)



TEMPer1F-----TXT AURO Reading





