

[Welcome](#)  
[I-System Introduction](#)  
[System Function Discription](#)  
[Running Enviroments](#)  
[II-System Installation](#)  
[Hardware Installation](#)  
[Product Introduction](#)  
[USB DVR System setup](#)  
[Software Installation](#)  
[How to get the software](#)  
[Driver Installation](#)  
[Server Software Installation](#)  
[III-Softare Usage](#)  
[Server](#)  
[How To Start Server](#)  
[Main Window Introduction](#)  
[Pop Menu Introduction](#)  
[Uninstall](#)  
[System configuration](#)  
[System setup](#)  
[Video Config](#)  
[Alarm Setting](#)  
[PTZ Setting](#)  
[Network Setting](#)  
[Network and Router Setting](#)  
[Remote login Setting](#)  
[Recode Plan Setting](#)  
[User Management](#)  
[Player](#)  
[Player Startup](#)  
[Main Window Function](#)  
[Remote Survilience](#)  
[IE browser](#)  
[Mobile Phone](#)  
[iPhone,iPad Software download and install](#)  
[Android software download and install](#)  
[FAQ](#)

What's the default password for Admin

System can not work when change the USB port

What's the user account for the mobile phone

# Welcom to use EASY DVR Software



EASY DVR is a PC based DVR surveillance software. It can run on Windows XP(32bit), Windows XP(64bit), WIN7(32bit) and WIN7(64bit).

EASY DVR adopt the best Video/Audio Compression technology, will get the maximin compression ratio and maintain the good video quality.

EASY DVR is simple and powerful. It's remote surveillance capability can support IE browser, iPhone, iPad and iPad well.

EASY DVR Current Version is V2.0.0.

## System Function Discription

- **OS requirements**

EASY DVR Server can work stably on Windows XP(32bit) , Windows XP(64bit) , 和 WIN7(32bit) , WIN7(64bit).

- **DirectX Enviroments**

Above Version 8.0, recommended using the latest vesrion.

---

Copyright 2003-2012 Your company name (Edit the text to change this template.)

## EASY DVR system requirements

- **CPU : Minimum** Intel P4 2.8G CPU(Or AMD CPU that can compare with).If you have 16 channel or more, you should have Intel P4 3.0G or above CPU(Or AMD CPU that can compare with).
- **Memory** : 512MB or above. 1MB recommended.
- **Mainboard** : If you use USB 2.0 DVR, you should have USB 2.0 high speed host controller.
- **Display card** : All ok.
- Sound card : All ok.
- **Hardisck** : High volumn harddisk. 7200mrp is better.

---

Copyright 2003-2012 Your company name (Edit the text to change this template.)

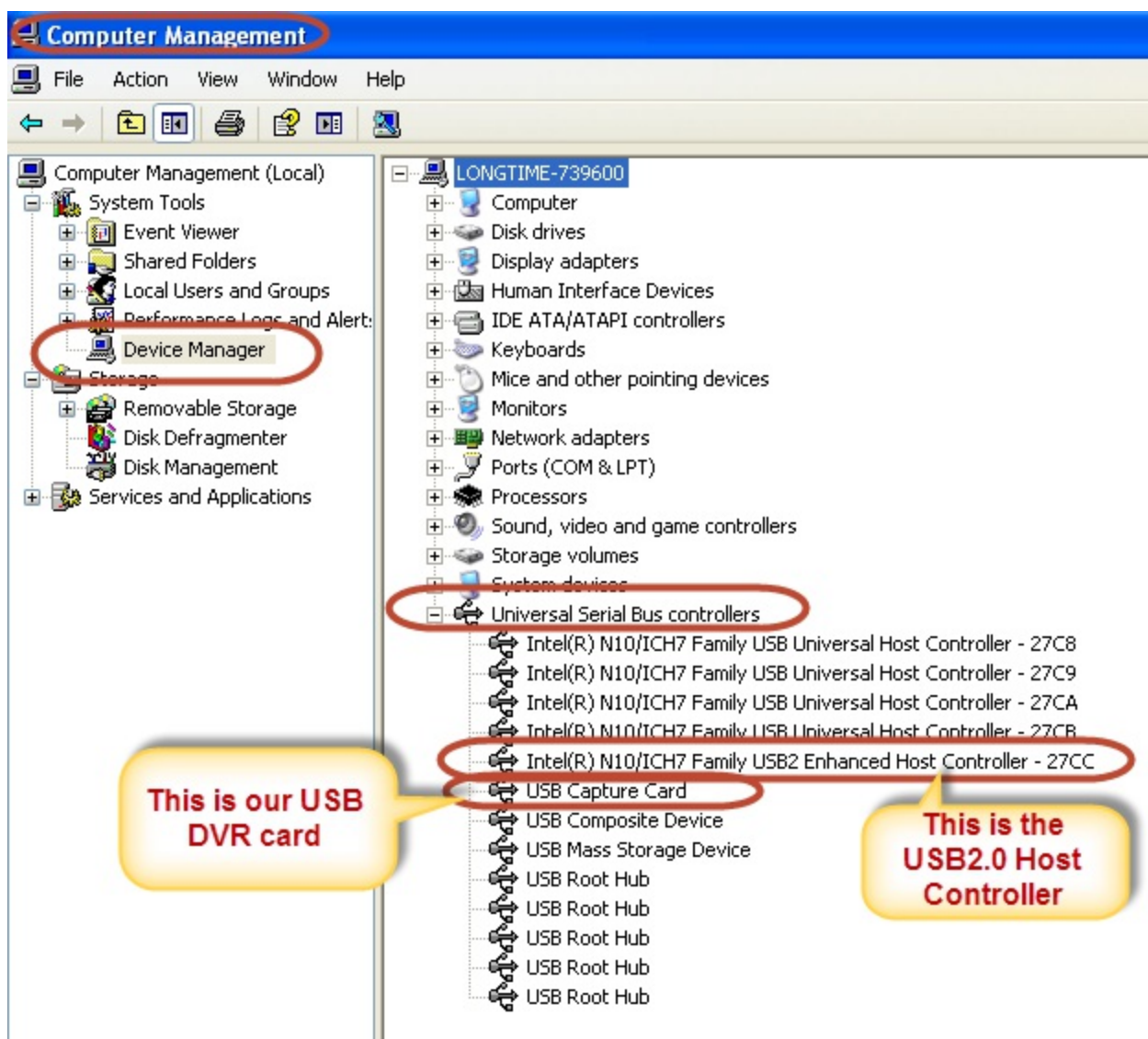
**Welcome to use our 4CH/8CH Realtime USB 2.0 video capture card.**

## **Introduction.**

USB2.0 High speed USB DVR adopts the newest technology. It's powerful and easy to use. It's support PNP. It's very convenient for the customer to setup their own surveillance system. Especially for the laptop. It can used widely, such as home, small shop, kindergarten and so on.

## **Attention.**

1. How to use our device, please refer the help documents in the CD or get the help from the software after it was installed.
2. How device requires your PC has high speed USB 2.0 (480Mbps) support. Please help to check if your PC has this capability before using this device. You can check this way.
2. Make sure your computer has USB 2.0 high speed (480Mbps) support. You can check whether your computer has this capability the hardware management. Open "Control Panel->Administrative Tools->Computer Management"



If you found the "Enhanced Host Controller" in the list, your PC has the USB2.0 high speed support. Just like the picture above.

**Attention: If your PC has 2 or more USB2.0 Enhanced Host Controller, your PC can support multiple USB DVRs and all the DVRs can run realtime.**

3. To prevent non-image display, please connect cameras to our USB device and power on the cameras, before installing USB device to your computer.
4. If you need to remove the USB device, please plug out the device directly, our and device support hot plug and play.
5. In case of problems, please contact with Local Technical Support for professional help.



4CH/CH Realtime USB2.0 DVR hardware setup is very simple is very simple.

- Connecting USB2.0 interface to USB2.0 port on your PC.
- Connecting 4CH/8CH video BNC port to your camera.
- Connecting 4 audio RCA to your MIC or other sound collection equipments.



(Edit the text to change this template.)

# You can get our software by 2 ways.

## 1. Software CD

All software and help documents are in the CD we provided.

## 2. Download from our website

You can also download our software on our website (<http://www.mv360.net>) Click the download link to get the software.

### Software Download List


- Server for USB 2.0.0
- Server for PCI 1.2.3
- IE Active X Control 1.1.0
- Client for Android 1.1.0
- System Help Docs

## System Login

Account :

Password:

Remember Pwd:

**Login** 

Mobile View 360 System  
Updated on 2012-06-21

Let's take installation from CD as an example. First, please insert the software CD in the CD-ROM driver. Then, run the "DVR\_Setup.exe" program in the root directory. An installation wizard window will be displayed.



We have 3 installation option in the wizard.

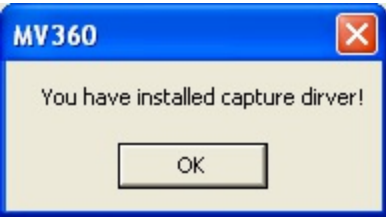
1. Install DVR Driver
2. Install MV360 Server
3. Install MV360 Client (Option to install)

We can only need to install the first 2 of the program (Driver and Server software). And we can install thest 2 without order. You can install server first or you can install the server first.

Click" Install DVR Driver", the installation wizard will help us to find the USB DVR insert our PC. Below figure shows it found 1 USB DVR connecting our PC. And then click the installation.

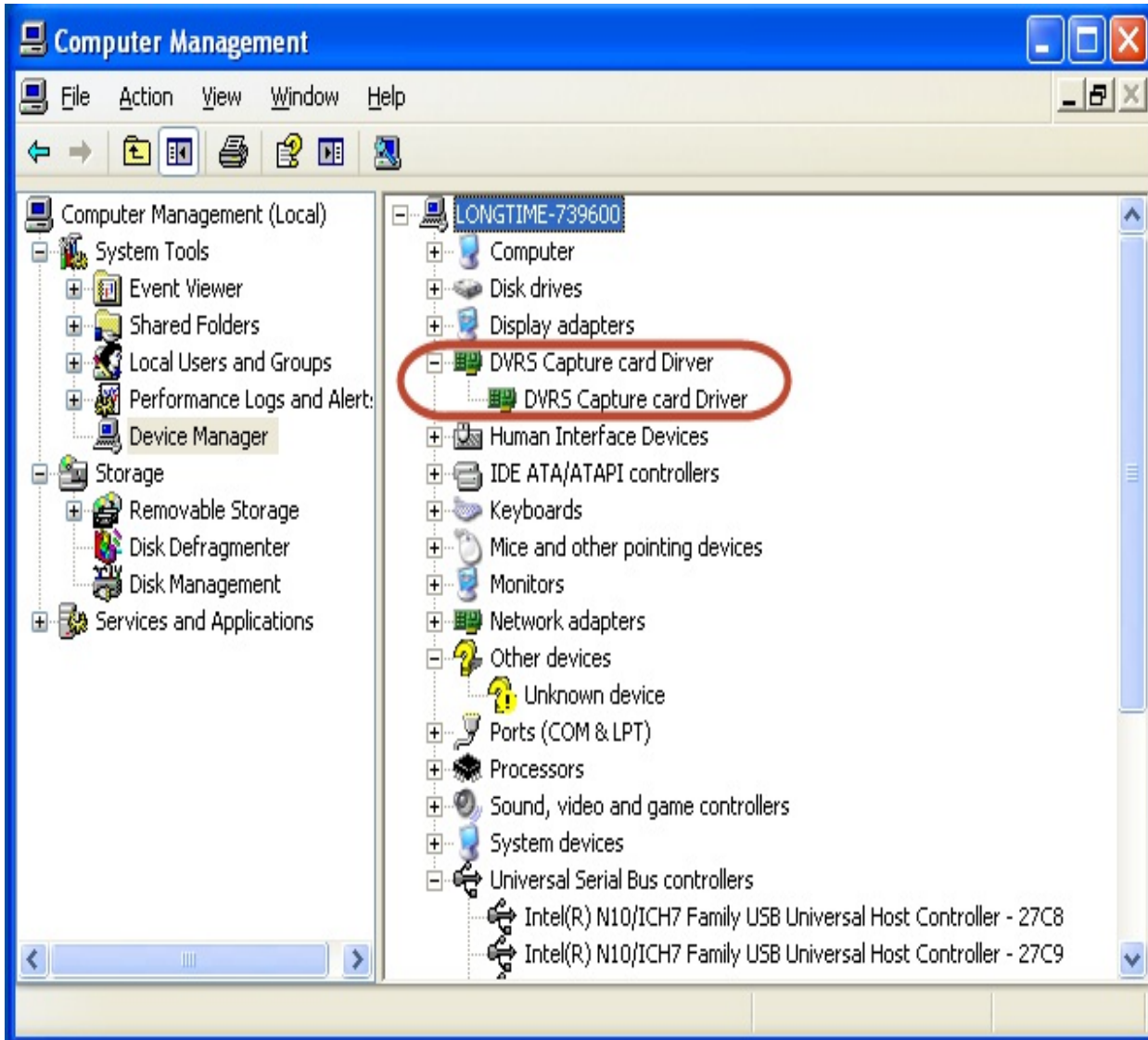


It will take seconds for the PC to install the driver. Finally, below window will be displayed. Click "OK" to finish driver installation.



How to know whether you have the driver installed correctly? We open the "Computer Management->Device Management->Universal Serial Bus controllers" to check it.

You will find a USB2.0 Host controller and our USB DVR device in the Universal Serial Bus controllers list.

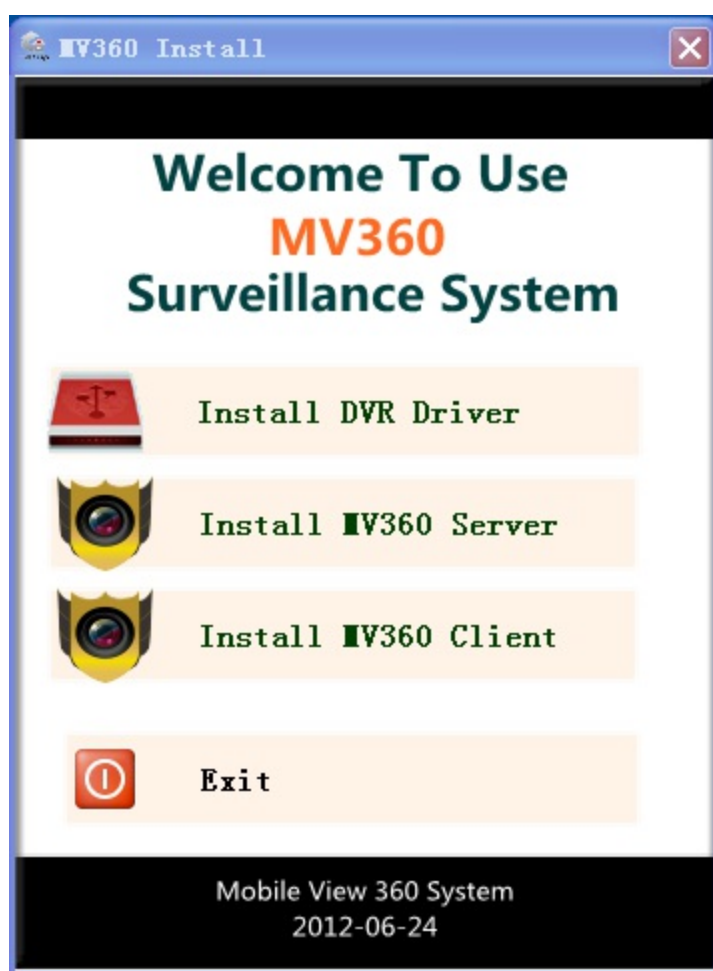


After the driver installation , we can install the EASY DVR Server software.

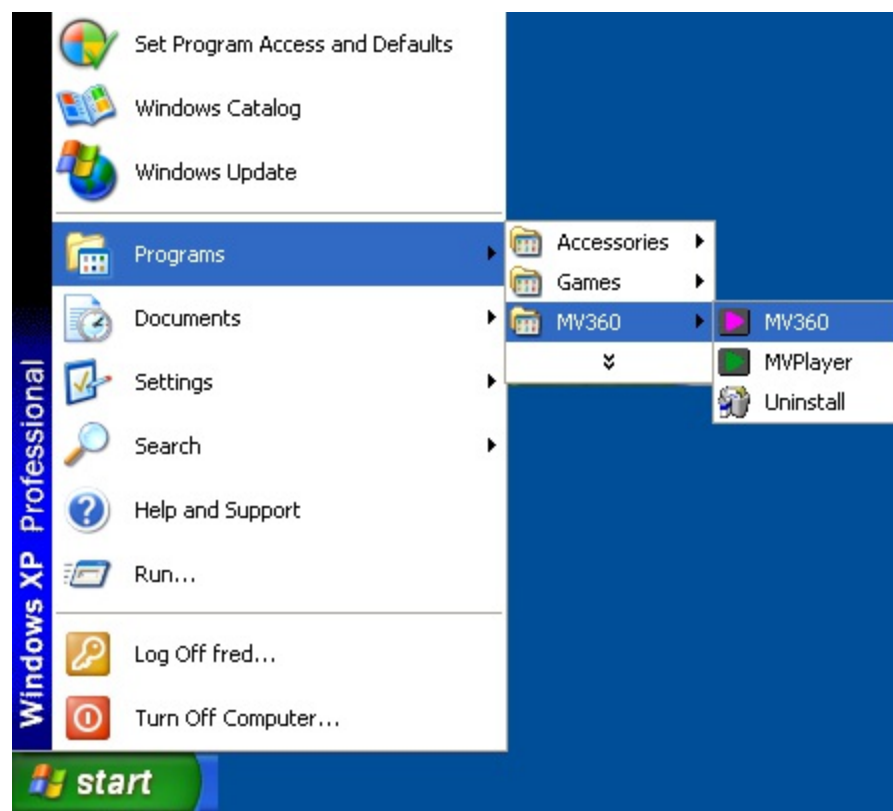
Copyright 2003-2012 Your company name (Edit the text to change this template.)

## Server Installation

After the driver was installed successfully, we continue to install the server program. Return to the installation wizard, Click "Install MV360 Server" button



The server installation program will be launched. You only need to click the "Next" button and adopt the default configuration. After it was installed, you will find a program group like below.



"MV360" is the server program  
"MVPlayer" is the record file player program.  
"Uninstall" is the uninstall program.

And also, the installation program will create a shortcut on your desktop



Now you have finished the software installation. Congratulations, please go ahead to run the program.





---

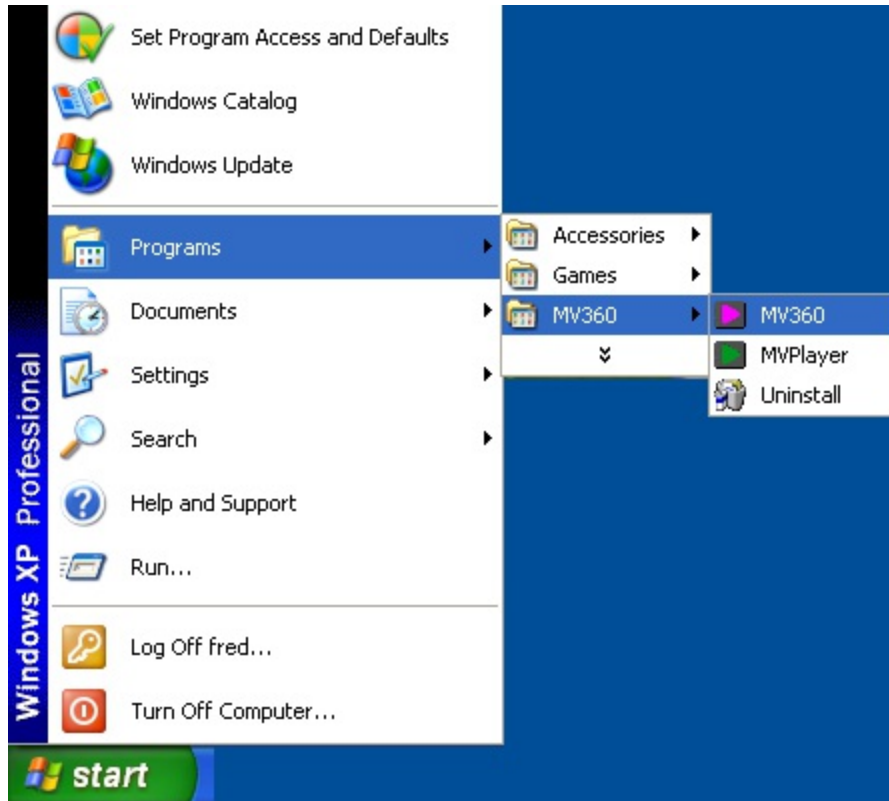
Copyright 2003-2012 Your company name (Edit the text to change this template.)

# EASY DVR Server start up

After EASY DVR server software installed correctly, it will make a shortcut on the desktop of your PC. Double click it to run the software.



All you can run the "MV360" software in the program group "MV360".



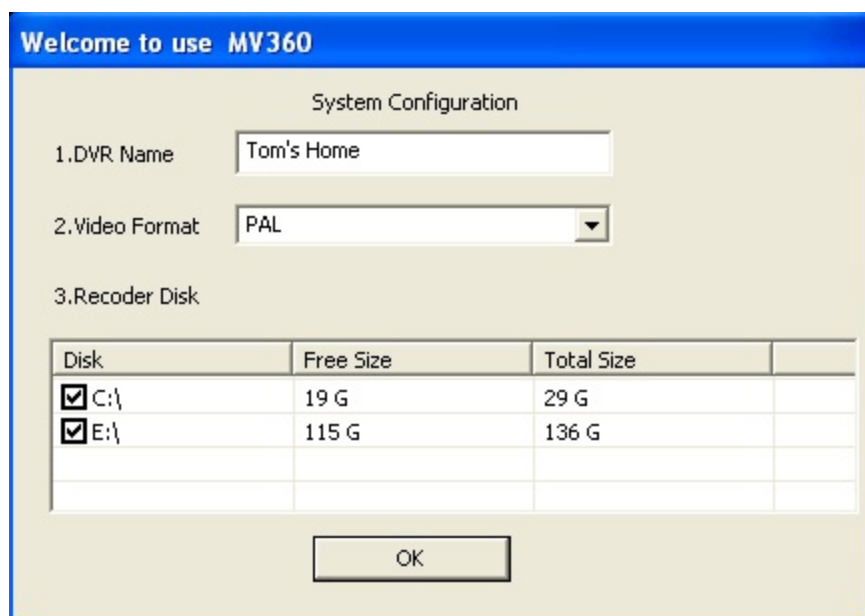
Below picture is the flash window.



# EASY DVR SYSTEM

# DVR

If it's the first time you run the software, a configuration window will be displayed. You need to input the "Server Name", Video Format(PAL/NTSC) and the harddisk to save the record file. Then click the "OK" to continue.



Welcome to use MV360

System Configuration

1.DVR Name

2.Video Format

3.Recorder Disk

Disk	Free Size	Total Size	
<input checked="" type="checkbox"/> C:\	19 G	29 G	
<input checked="" type="checkbox"/> E:\	115 G	136 G	

After the main form showed, if you want to do any setup, eg, click the function button, you will be needed to login.

The default account is:

User: admin

Password is empty. (We set the default password empty. It's for convenience.)

**SYSTEM LOGIN**

User:

PWD:

Auto Login     

So click ok to continue for the default password is empty. If you want to change the password for the account, you can change it in the configuration window.




## I. Main Display Window :

Display the video from the cameras. We can have 1, 4, 9, 16, 36 split window for cameras.

## II. Camera Status:

Show the camera running status.

 : Gray, Current channel has no camera connect or camera does not output the video signal.

 : Blue, Current channel has the camera video input, but not in recoder status.

 : Red, Current camera has video input and in recoder status.

### III. Main functional button

#### 1. Split window config



Click the button will pop up below menu to select between, 4、 9、 16、 36 split window

4 Screen  
9 Screen  
16 Screen  
36 Screen

#### 2. Full Screen button



Full screen display the video.

#### 3. System configuration button.



Open the system configuration window.

#### 4. Player button



Open the recode file player program.

#### 5. Previous/Next Screen button

 Switch to the previous window  Switch to the next window

eg. If you have 8 cameras and in 4 window display mode, the first screen will display the CH1~4 video, Click the next button, the display window will show CH4~8. If you click the previous button, it will switch back.

## 6. Rolling show button



Rolling show the video channel.

## 7. System log memo



## 8. Snap button



Click to snap a picture for the current window. It will open a window to show the image you snapped.



## 9. Lock the window



If you click to lock the window, customer has to re-login by type in the correct user name and password.

## IV. Camera List

Here, the all camera input the system will show in the list. right click each channel, will popup a menu for more function.

## V. Video Recode control

 Enable to recode all video channel

 Disable to recode all video channel

## VI. PTZ Control Pannel

Here, we can control the PTZ connected to our system.

1. Focus control



2. Zoom in / Zoom out control



3. Aperture control, open or close



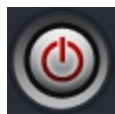
## VII. Audio volumn control and exit system button

1. Audio volumn control



To control the Audio volumn.

2. System logout.



Click to exit the system.

## VIII. Help

 Open the help documents.



## I. Mainform Pop Menu



Enable Current CAM Recorder  
Close Current CAM Recorder

---

Enable All CAM Recorder  
Close All CAM Recorder

---

TV OUT ▶

---

Full Screen

### 1. Enable Current CAM Recorder/Close Current CAM Recorder

Enable/Disable the current CAM recorder.

### 2. Enable All CAM Recorder/ Close All CAM Recorder

Enable/Disable All CAMs recorder.

### 3. TV out

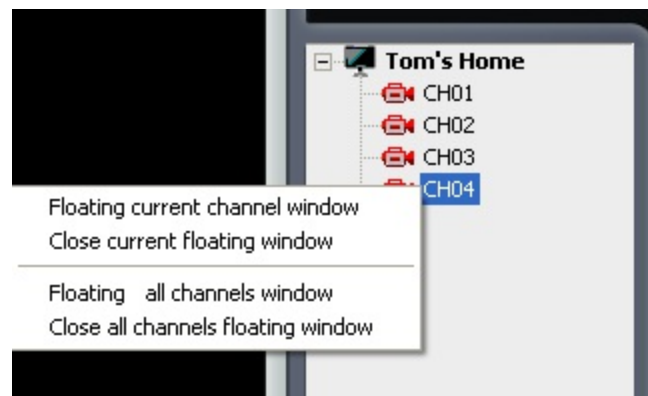
TV out function is an option. It's only work on some device with TV out function.

### 4. Full Screen

Enable/Disable Full Screen display.

## II. Camera List Pop Menu

In the Camra List, You can click the right key of the mouse to pop-up the menu.



### 1. Floating the current channel window

Click to floating the current video channel. What's the floating window. Pls check the below picture. If the video channel is showed in the floating window. It can be drag and pull across the whole window. And it's window size can be change by drag the boarder of the window. So that you can do anything else while monitoring the video camera.



## **2. Close current floating window**

It will close the floating window for the channel selected. The video will be displayed in the mainwindow instead.

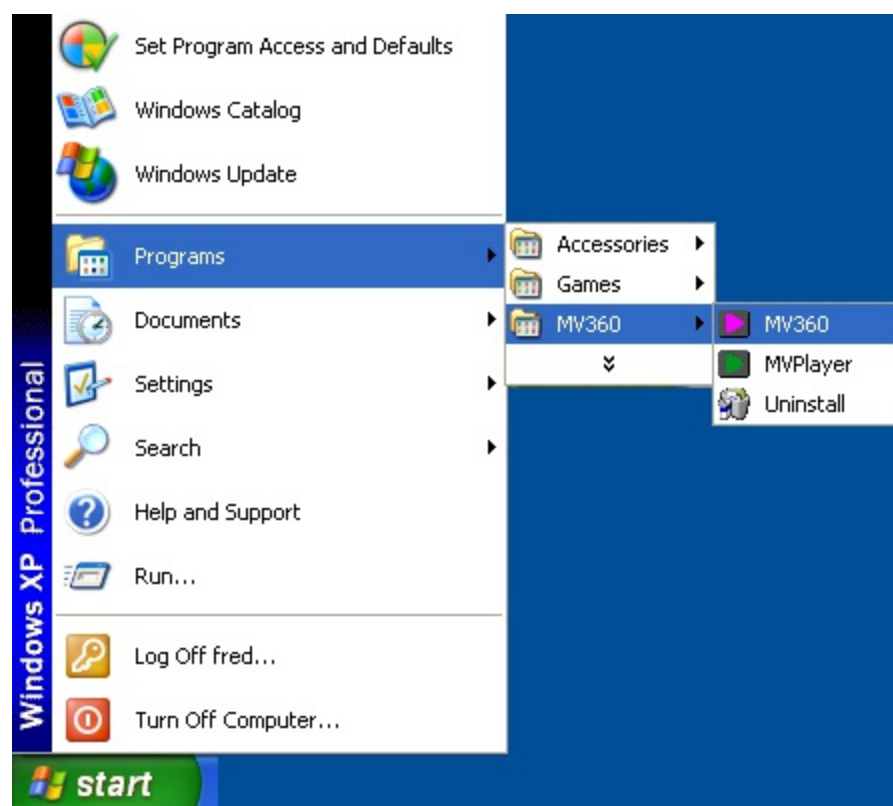
## **3. Floating all video channel window**

Click to floating all video channel.

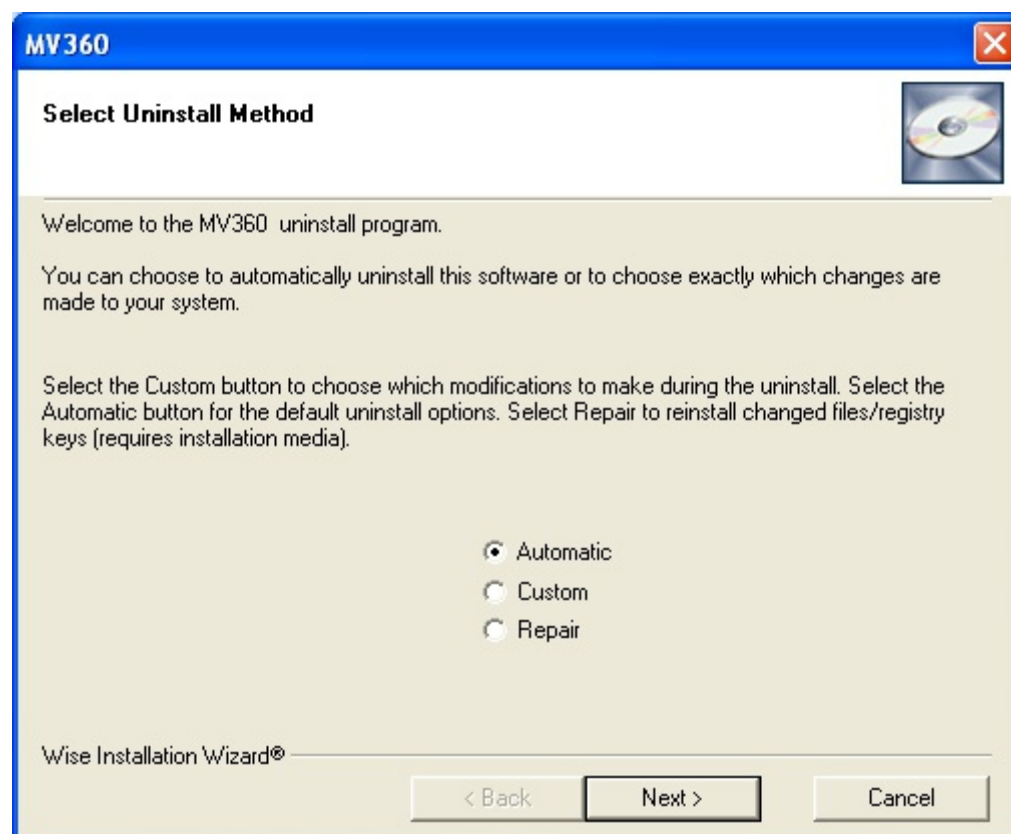
## **4. Close all channels floating window**

Click to close all video channel floating window. All video will be displayed in the main window.

To uninstall the software, you can run the uninstall software in the "MV360" program group.



Select "Automotion" and click "Next" to continue.



Click "Finish" to finish the unistallation.

**Perform Uninstall**

You are now ready to uninstall the MV360 from your system.

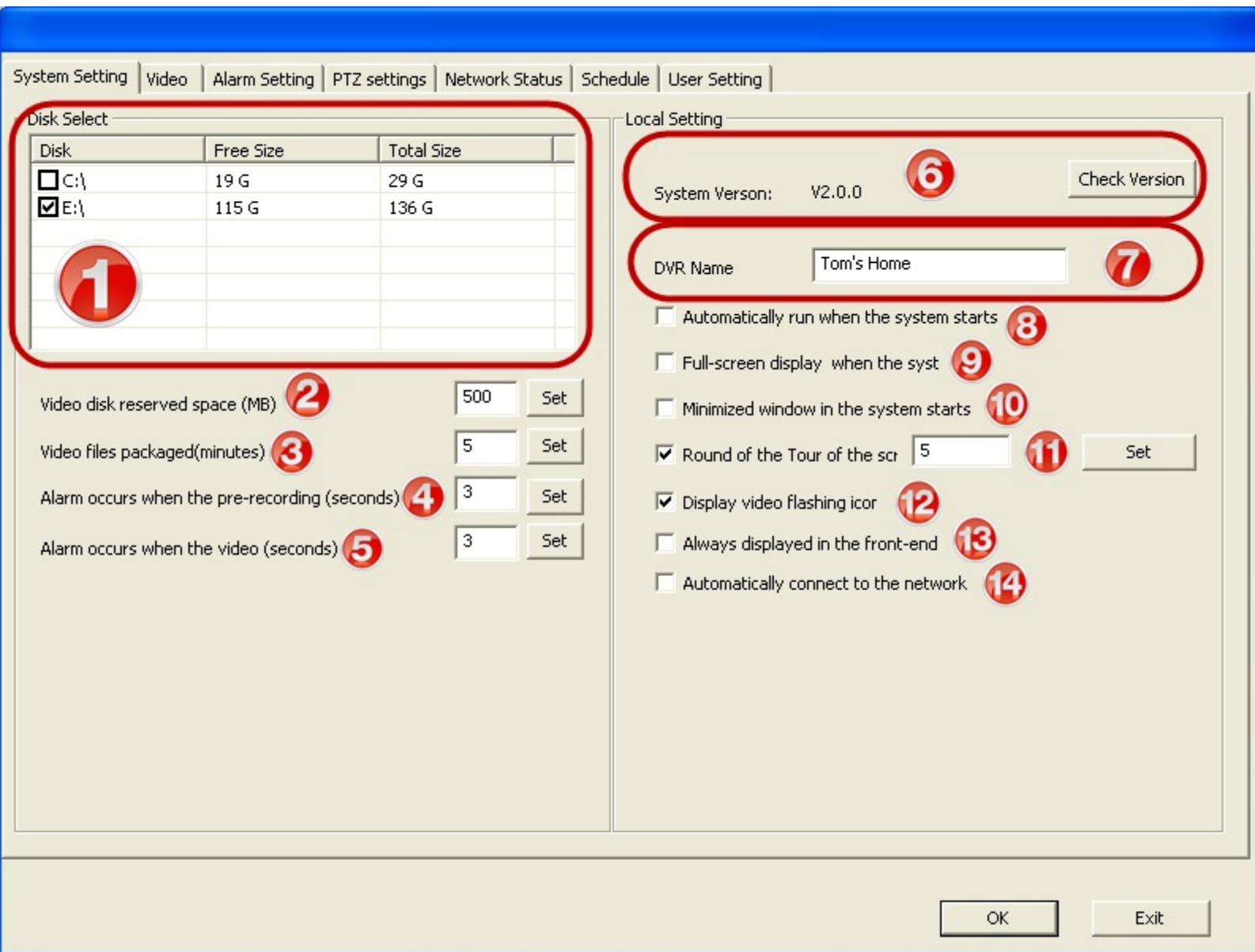
Click the Finish button to perform the uninstall. Click the Back button to change any of the uninstall options. Click the Cancel button to exit the uninstall.

Wise Installation Wizard®

< Back

Finish

Cancel



## 1. Recorder file disk selection.

Select the disk to save the recode file. System will create a "DVR\_Record\Video" in the disk you select.

## 2. Video disk reserved space.

Customer can set the disk space reserved for other function. If the current unused disk space is smaller than this number. The oldest recoder file will be eased and the newest one use that space. Default is 500MB.

## 3. Video file size.

Set the video recode file size. eg. 5 minutes a file, there will be 12 files for one channe in one hourl. 10 minutes a file, there will be 6 files in one hour.Default is 5 minutes a file.

## 6. Software version show

Show the software version that you're using. Click the "Check Version" button to check if

there is new version that can be downloaded.

## **7. DVR name**

Give a name for the DVR system.

## **8. Automatically run when system start**

If this option is checked. The server software will be run automotively when windows system start up.

## **9.Full-Screen when the server software start.**

If this option is checked. The server software will be run in full-screen at first.

## **10. Minimized window when the server software start.**

Minimized run when the software start.

## **11. Screen Rolling time set**

## **12. Display flash icon when recode.**

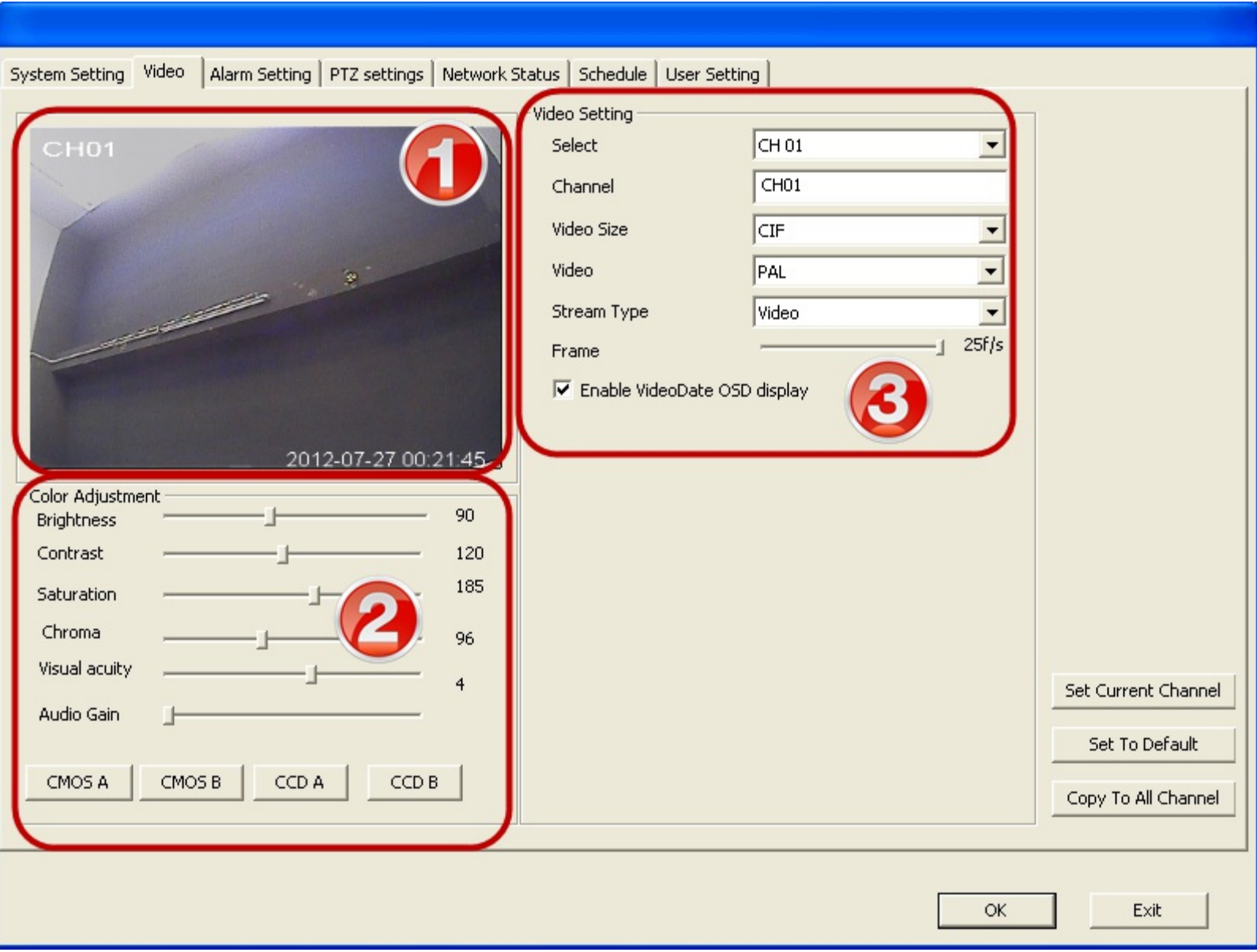
If this option is checked. Display the red round icon whe the video channel is in recode status.

## **13. Always displayed in the front-end**

If this option is checked. The software will run at the top of the window.

## **14.Automatic connect to the network.**

If this option is checked. The software will connect to the server automatically when start up.



**1. Image View frame** Show the current channel Video signal, you can revise the video parameter and see the video changes in this frame.

**2. Color Adjustment**

Customer can revise the video parameter such as brightness, contrast, Saturation and so on here. We also provide 2 default parameter group for CMOS and CCD.

**3. Video Setting**

- "Select"

Select the channel which you want to revise the parameter.

- "Channel"

Give a easy remember name for the channel. eg. Give a name "lobby" or "backdoor", this name will be added in the video stream for future reference.

- “Video Size”

You can change the video, such as "CIF" or "D1"

- “Video Format”

"PAL"/"NTSC"

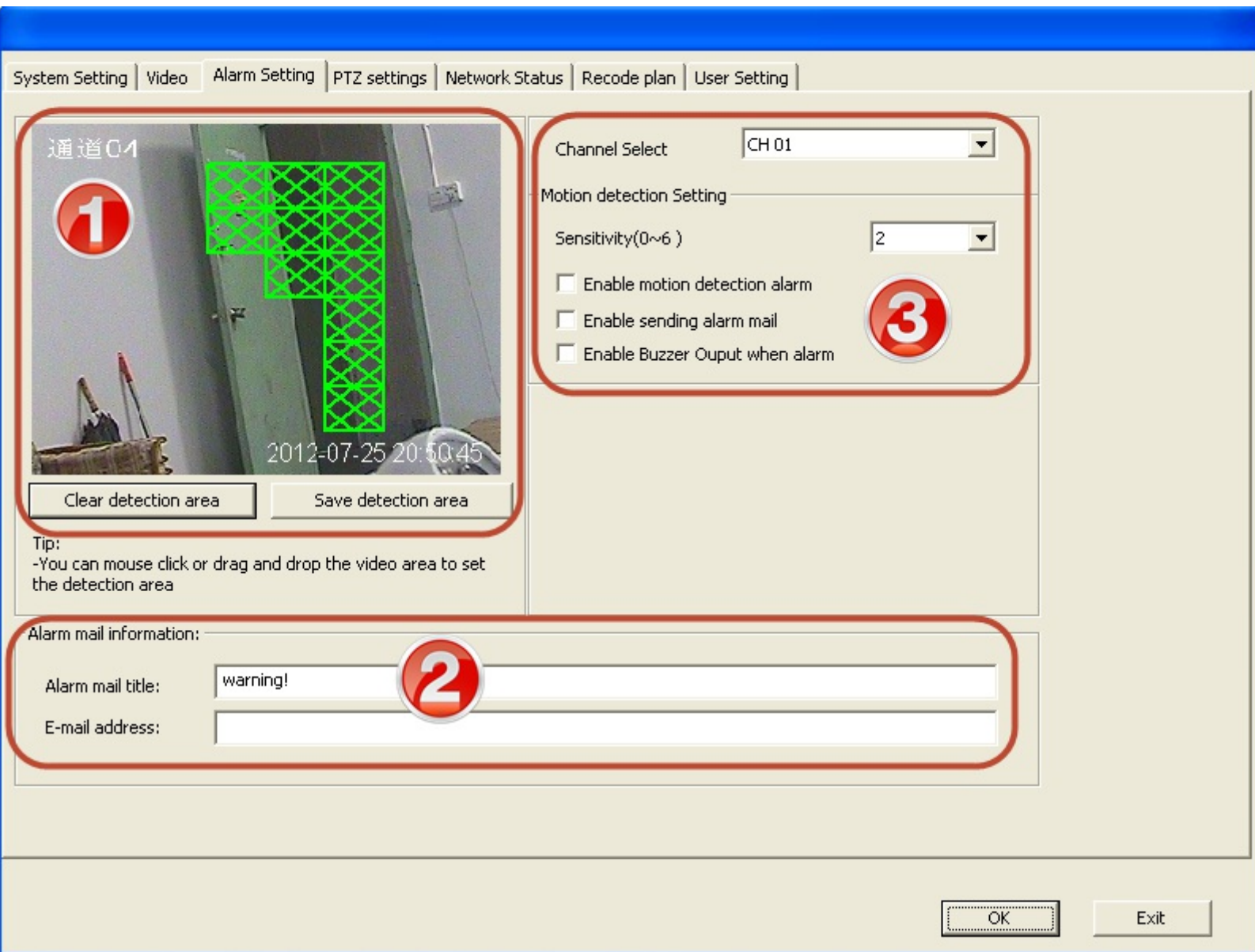
- “Stream type”

You can select between "Video" or "Video and Audio". If you don't have audio input, pls select "Video" only to avoid the noise in the remote surveillance terminal such as mobile phone.

- “Enable Video OSD”

Check this option to enable add the current date, time and channel name in the video stream.





## I. Set the detection area

We can set the detection area by click the mouse left button. The high light block in green is the area for motion detector. If you want to cancel the area, just click the block in high light.

## II. Set the email information for alarm

### 1. Alarm email title

Give a easy remembered email subject for the alarm email.

### 2. Email address

Give an email address which will receive the alarm email from the server when an alarm takes place.

## III. Alarm parameter setting

### 1. Channel select

Select the video channel which you want to add the motion detection to.

## 2. Sensitivity

We have 0~6 grade sensitivity for your choice for motion detection.

## 3. Enable motion detection alarm

Enable the motion detection function

## 4. Enable sending alarm mail

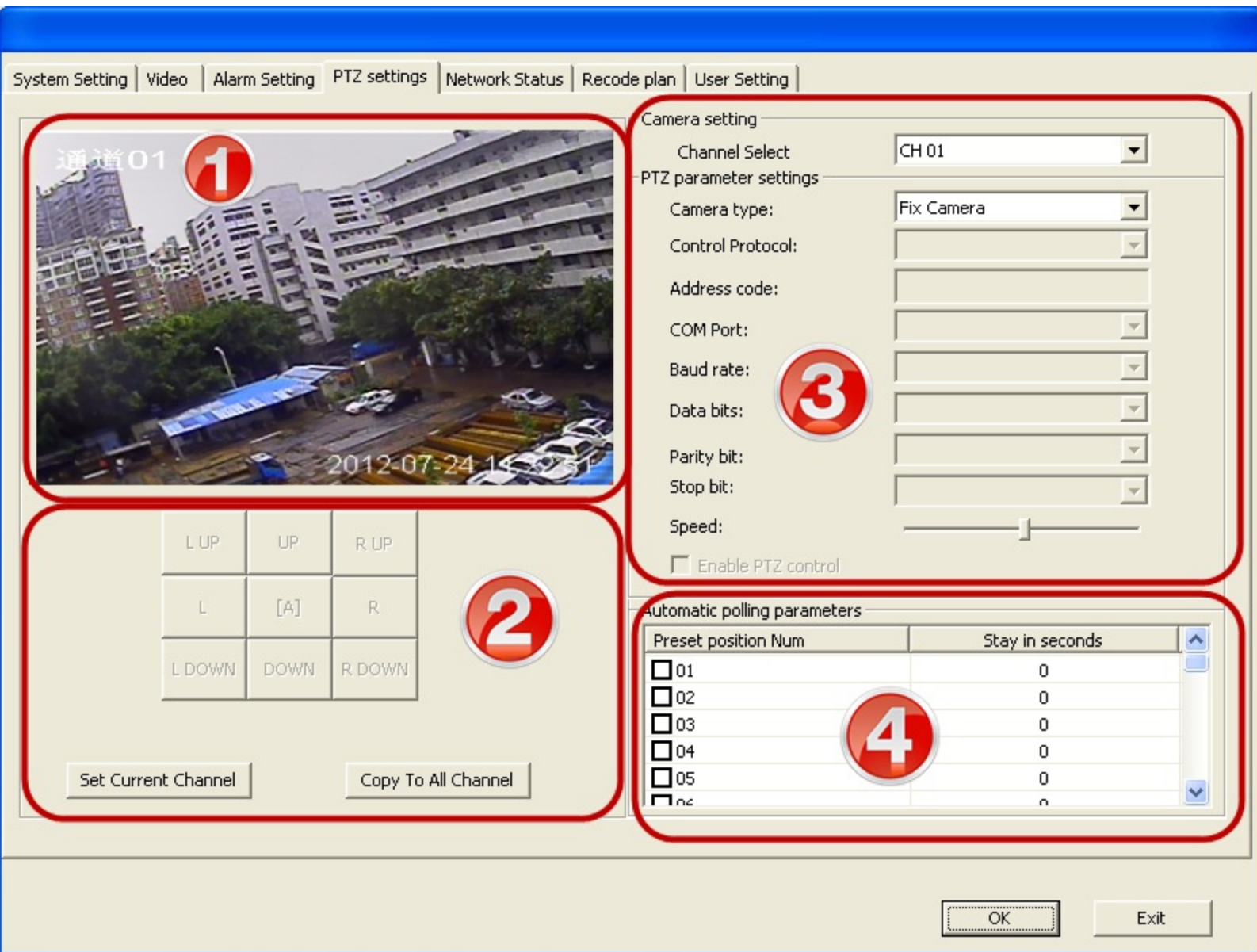
Enable sending an alarm email to your mailbox which you set in this page.

## 5. Enable buzzer output

Check this option which make the buzzer beep once when an alarm issue occur.

---

Copyright 2003-2012 Your company name (Edit the text to change this template.)



## 1. Video viewer

We can see the current video image here. It's very convenient for you to set the PTZ parameter.

## 2. PTZ control panel

You can control the PTZ freely here. And you can save the parameter or copy the parameter to other channel.

## 3. PTZ parameter setting

Here is parameter to control PTZ. Include which COM port to connect the PTZ, baud rate and so on.

## 4. PTZ Automotively polling setting

After you set a group of pre-setting position for the PTZ, give a stopping time for each one,

so the PTZ will automotively polling all the pre-set postion one by one.

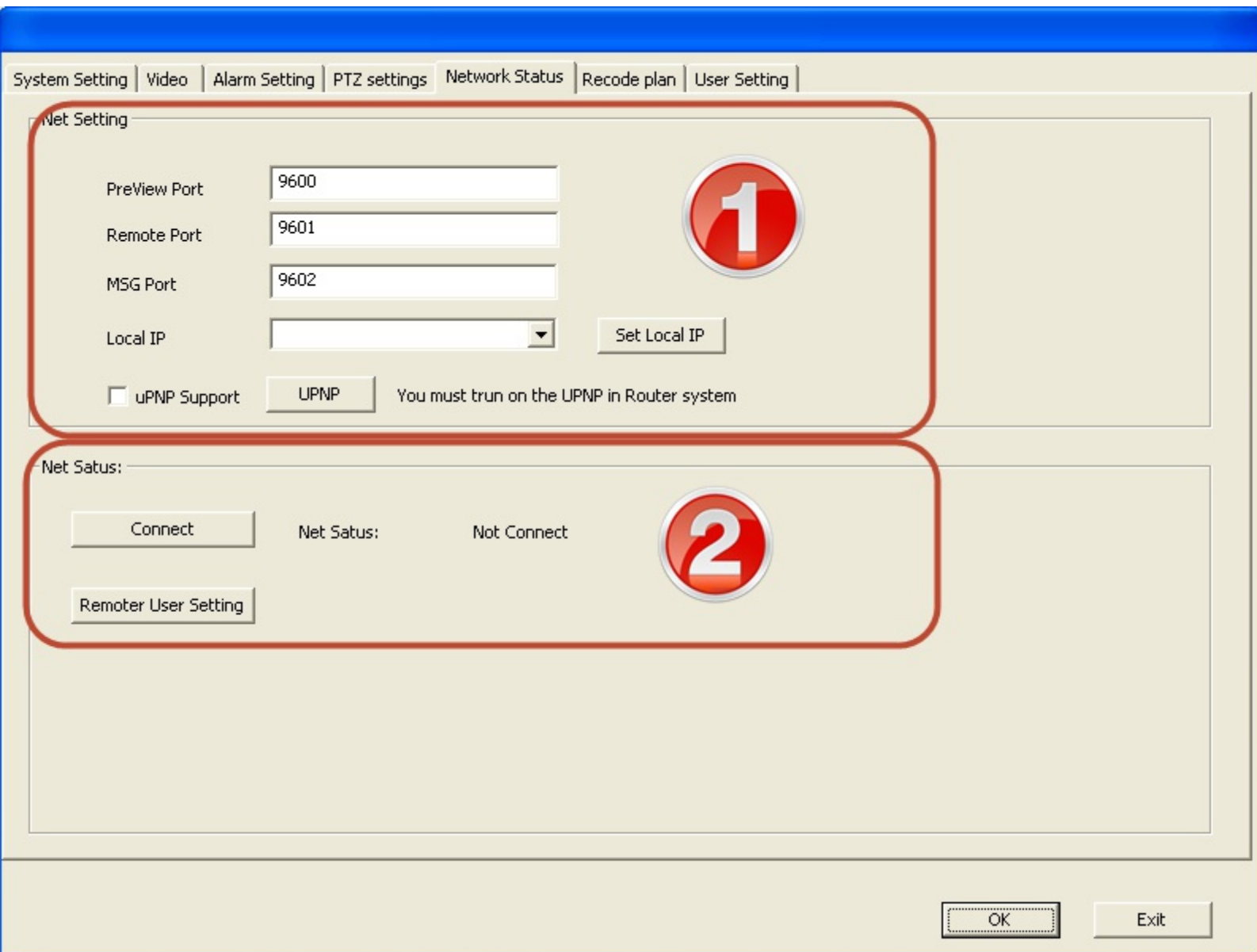
---

Copyright 2003-2012 Your company name (Edit the text to change this template.)

New Topic (*Press Shift-Enter to insert a line break. Press Enter to add a paragraph return.*)

---

Copyright 2003-2012 Your company name (Edit the text to change this template.)



## 1. Net parameter setting We need to set 3 part number

1. Preview Port (default = 9600)
2. Remote recode file view port (default=9601)
3. Message port ( default=9602 )

we have the default part number for them. You don't need to change them if there is no conflict.

In order to implement the remote surveillance, you have to config the router too if you have the access to the internet by router. If your PC connect to the internet directly, not by router. You don't need to config the router.

## 4. "uPNP support"

If you check this option, you should enable the "UPNP" function in your router, if you use a router to access the internet.

If you don't check this option, you have to add the port transfer table for the port to your local IP in your router.

## 2. Net status

You have to connect to our server before you can remote view. Here, click the "Connect" button to connect our server and you will have to register one remote user manager account before connect to our server.

---

Copyright 2003-2012 Your company name (Edit the text to change this template.)

Click "Connect" button to open the connection dialog.



1. DVR Name.

Give a DVR name. So that you can easy to find it on the remote survillience software. The default name is the one you provide at the first time you run the software.

2. Remote user management account create.

You should create a remote user management account before you connect to server. Click "Add user account" to create them. After you create the account, please click the "connect" button to connect to the network.

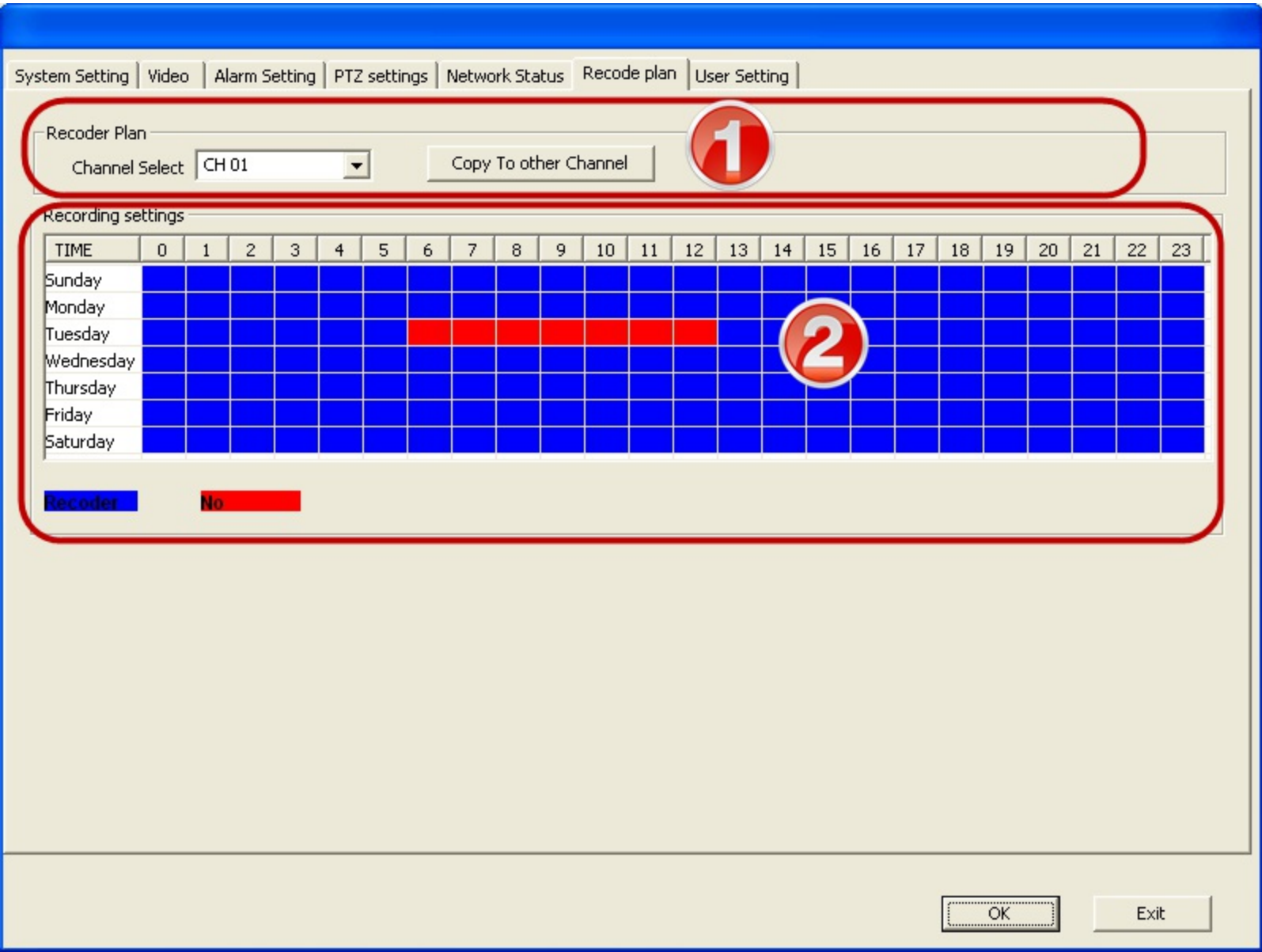
If you have the remote user management account already. System will fill in it in the form, you can revise the password by click "Edit user account" button.

After you connect to the server, you can remote survillicen by IE browser, iPhone, iPad and Android system.

You can use the remote user management account to log in in the remote terminal. Or you can create some remote user account to log in.



In the recode plan page, It's very easy for us to set the plan for recode.



### 1. Channel select

First, you need to select the channel to make the recode plan. If you have made an plan for one channel, you can copy the plan to other channel by click "copy to other channel" button.

### 2. Select the recode hour everyday

Swich the recode/no recode by click the left button of the mouse.

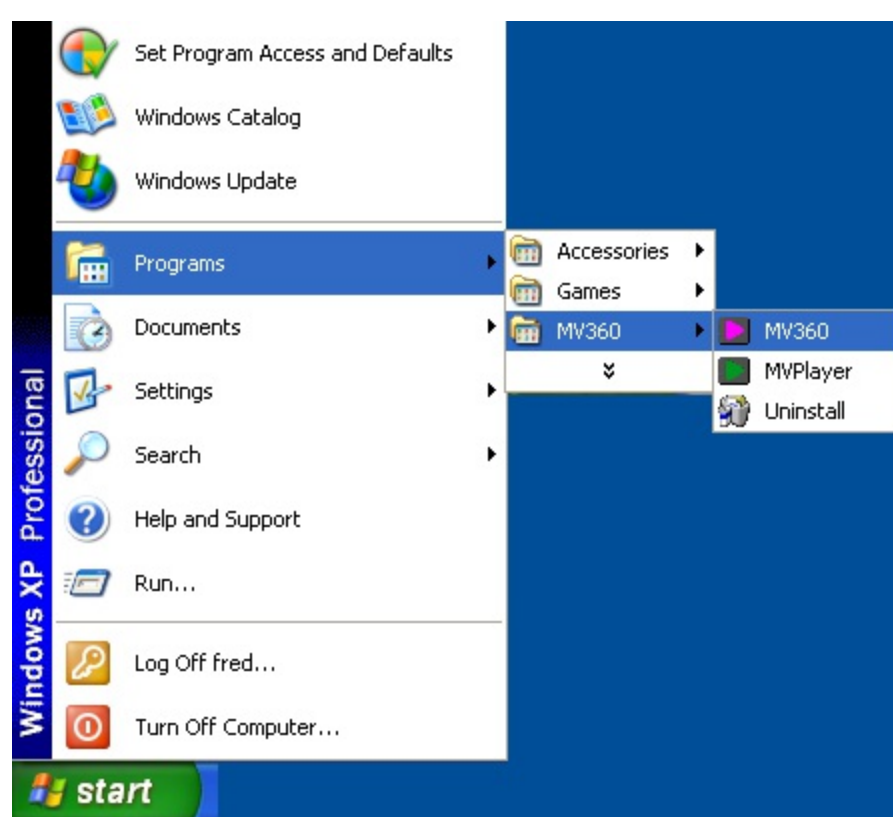


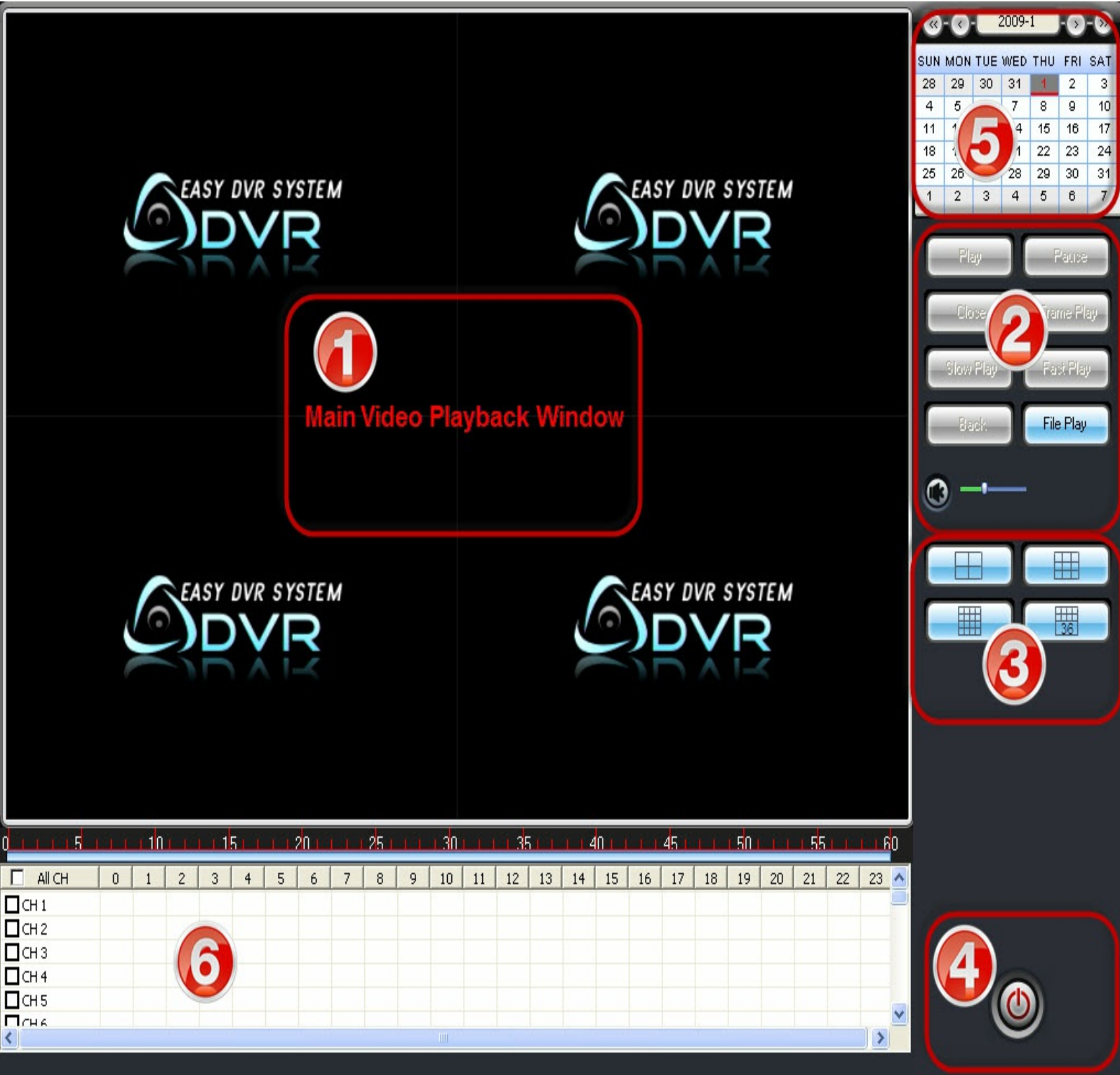
The player software has been installed together with the server. You can startup it by two ways.

1. In the server software, click the player button to launch the player.



2. In the "MV360" program group, run the "MVPlayer". The second one.





**1. Main display window** All the recode file will playback in this window. You can use spit the display window by 4, 9, 16, 36.

**2. Playback control pannel**  
 We support fast, slow, frame play and file play here. We can also control the audio volumn.

**3. Window split control**  
 You can use spit the display window by 4, 9, 16, 36.

## 4. Exit

Exit the player program.

## 5. Recode file date select

You can select the date you want to check the recode file. There is a blue dot in the date number if there is recode file that day.

## 6. Recode file select

Customer can playback anytime in the 24 hours in a day.

Customer can playback the file in 2 steps.

- 1st, select the date in the calendar.
- Double click in the recode file list and you will see the recode video.

---

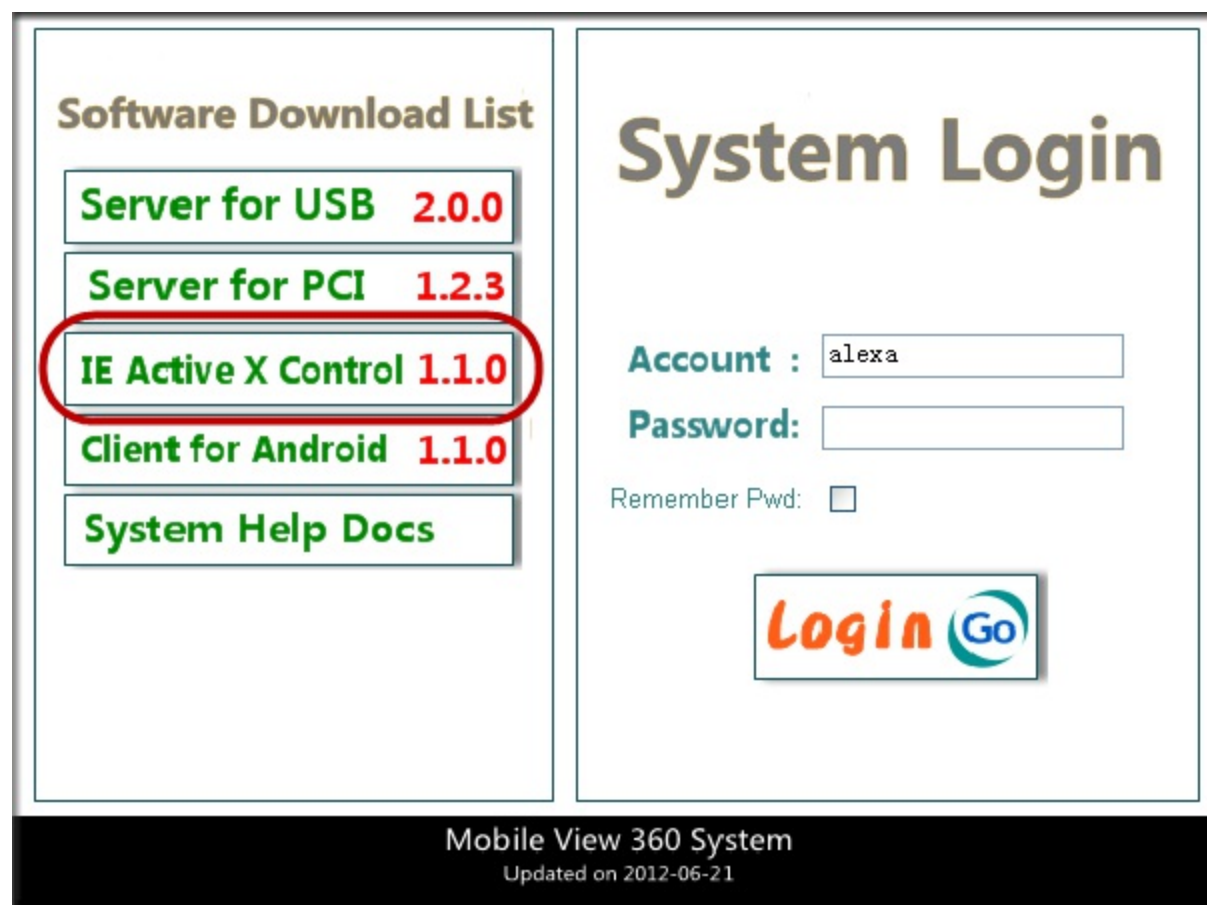
Copyright 2003-2012 Your company name (Edit the text to change this template.)

Mobile View360 Platform support IE browser viewer. It's very convenient and easy to use.

website: <http://www.mv360.net>

1st. Download and install the ActiveX controller.

Click "IE ActiveX Control" link to download the ActiveX controller first.



The screenshot displays the Mobile View 360 System interface. On the left, under the heading "Software Download List", there are five buttons: "Server for USB 2.0.0", "Server for PCI 1.2.3", "IE Active X Control 1.1.0" (circled in red), "Client for Android 1.1.0", and "System Help Docs". On the right, the "System Login" section contains an "Account" field with the text "alex", a "Password" field, and a "Remember Pwd:" checkbox. Below the login fields is a "Login Go" button. At the bottom of the page, it says "Mobile View 360 System Updated on 2012-06-21".

Eg. we download the ActiveX and put it on the desktop. We run it by double click it.



## 2nd, Log in

How to get the login account? The login account is created in the server software.

Blow picture shows the example.

You can use blew 4 account to log in in the remote terminal.

alex

alex  
vtest  
xyz



### **3rd, How to use**

After you log in succussfully, you can check the "help" link to get the help quickly.





Currently, MV360 System support below 3 remote terminals.

- iPhone ( iOS 4.2 or above )
- iPad ( iOS 4.2 or above )
- Android ( 2.2 or above )

After you install the software in your mobile phone or iPad, you need to provide the user name and password to log in.

The account is the same as the IE browser account. You can create them in the server program.

Let's take Android mobile phone as example.

After you the software runing, the login window will be displayed.



MV360

MV360

  
MV360  
www.mv360.net

User:

PS:


Save User and PS

Login Exit

V1.1.0

Input the User name and Password to login.

Back DVR SYSTEM LIST


 test-002

Click the Sever name to open the camera list.

Back CAMERA LIST

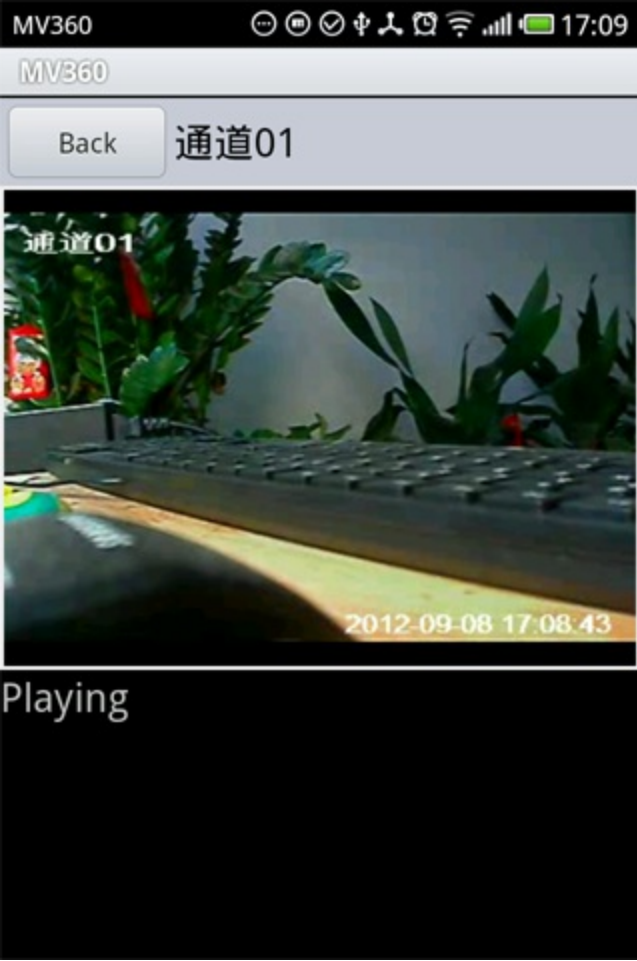
 通道01

 通道02

 通道03

 通道04

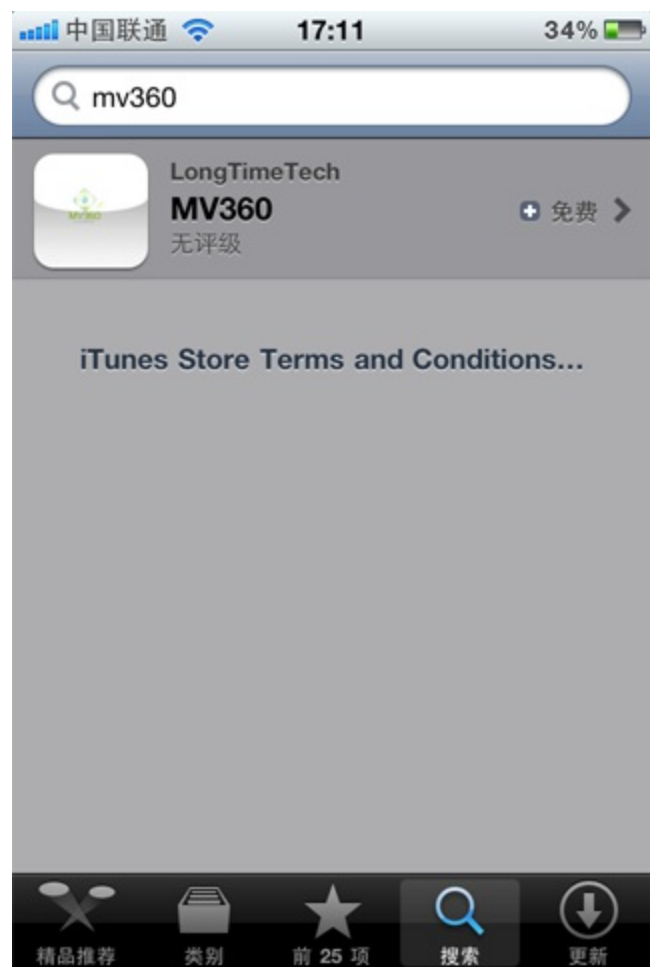
Click the camera to view the video.



Video show now.

How to get the software for your iPhone/iPad?

Pls log in the AppStore and search the keywordd "MV360". And you can download and install it freely.





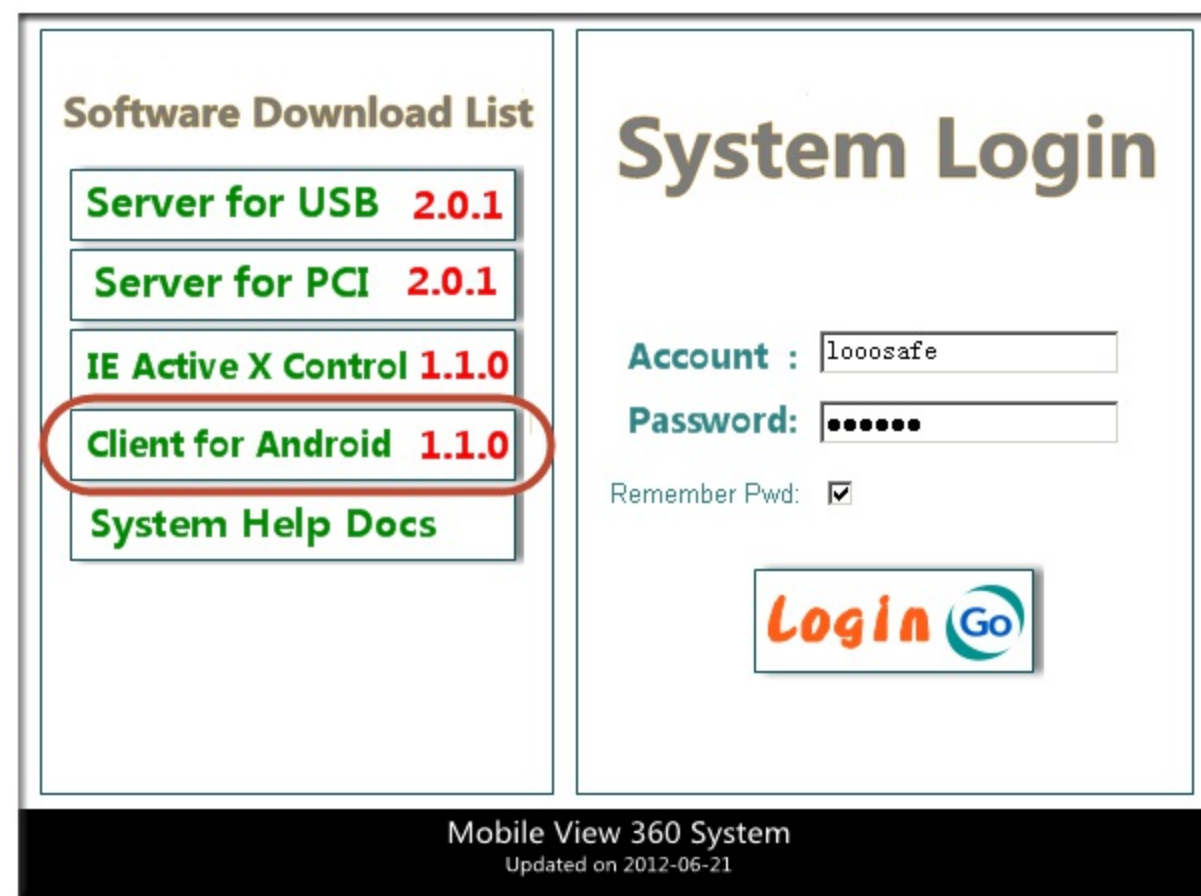
You can get the Android software packages by 2 ways.

## 1. Software CD

Android software packages is in the directory "Android Mobile Software".

## 2. Download from the website

You can also download it from <http://www.mv360.net>

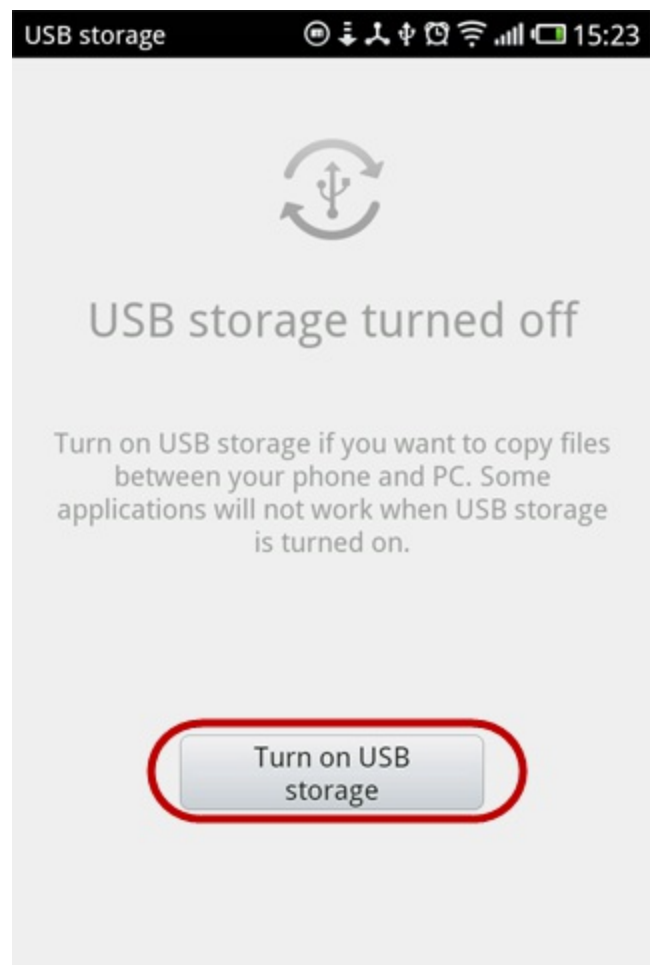
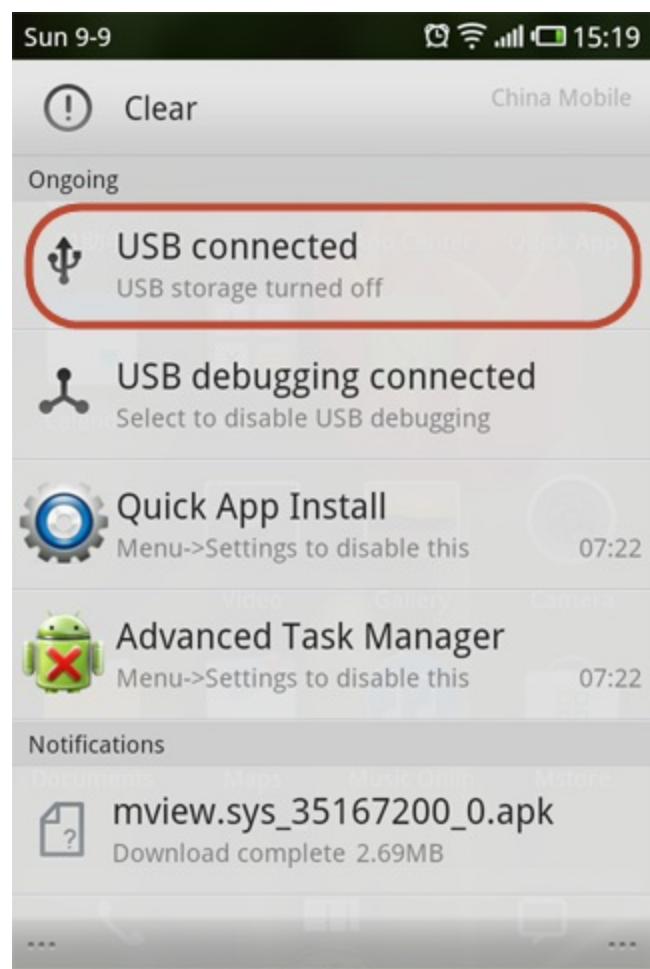


The screenshot displays a web interface with two main sections. On the left, under the heading "Software Download List", there are five buttons: "Server for USB 2.0.1", "Server for PCI 2.0.1", "IE Active X Control 1.1.0", "Client for Android 1.1.0" (which is circled in red), and "System Help Docs". On the right, under the heading "System Login", there are input fields for "Account" (containing "loosafe") and "Password" (containing six dots). Below these is a "Remember Pwd:" checkbox which is checked. At the bottom of the login section is a "Login Go" button. The footer of the page reads "Mobile View 360 System Updated on 2012-06-21".

Click the "Client for Android" to download the "apk" package for your Android system to your PC and then install them by the Mobile PC tools.

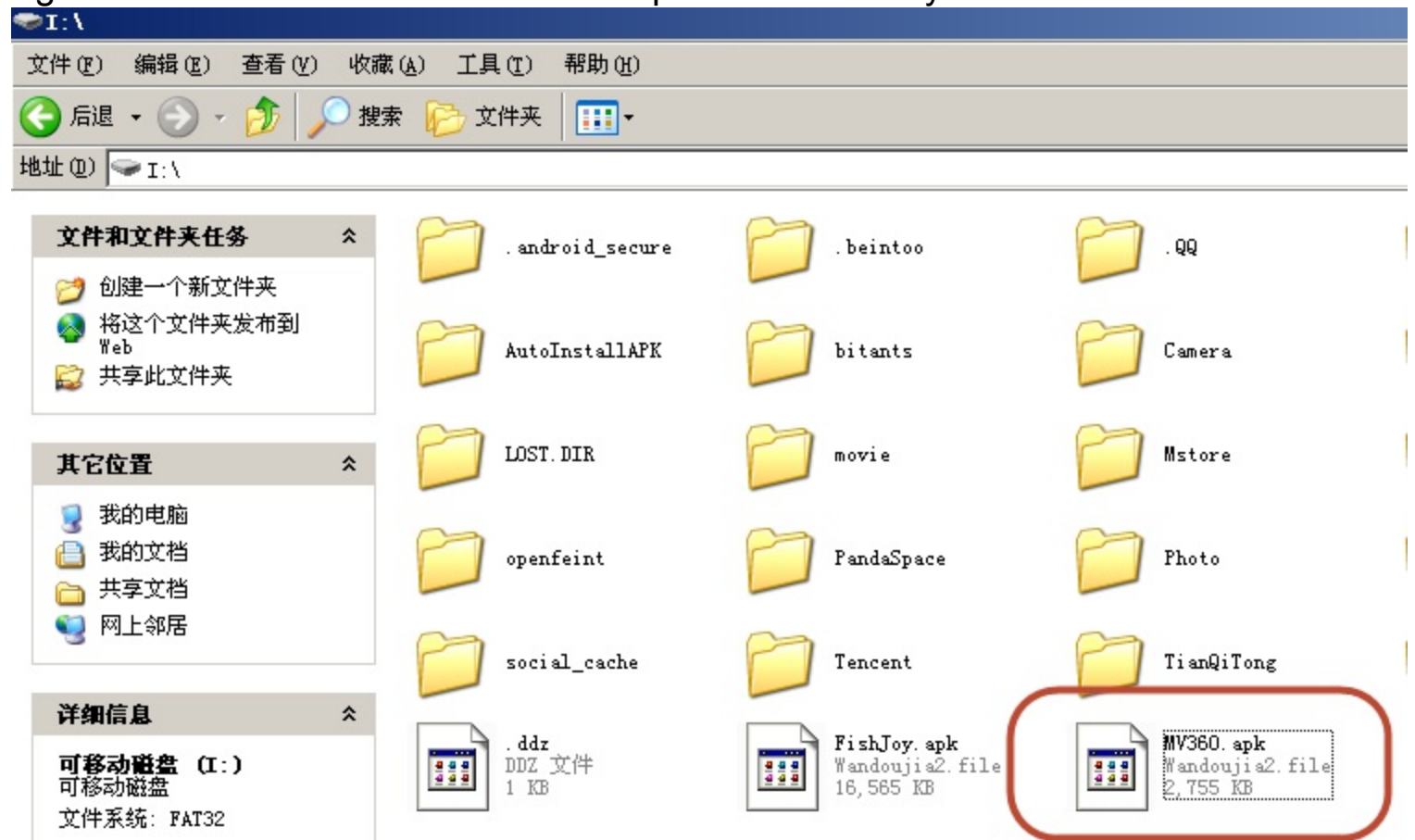
If you don't know how to install the apk package to you Android mobile, please read below carefully.

1. Connect your Android Mobile phone with the PC by the USB cable from the Android mobile phone supplier.
2. The Android mobile phone will notice you that USB connected, click to turn on the USB Storage.



Then, we copy the "MV360.apk" file to the root directory of the mobile phone.

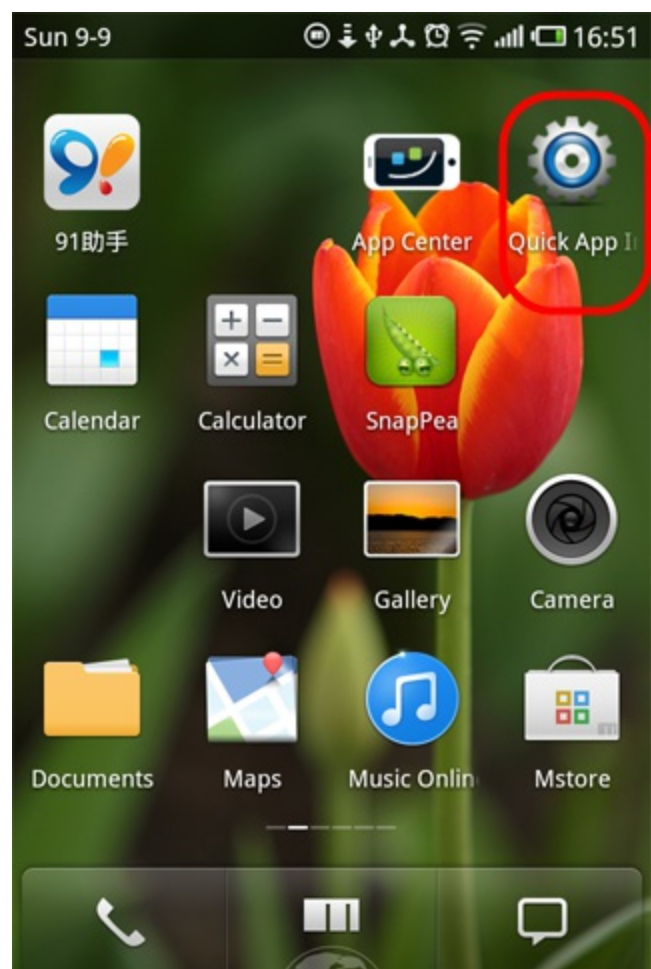
Eg. the usb disk for the Android mobile phone is "I:" in my PC.



After we copy the file to the root directory, we can use some tools in your Android mobile phone to install this apk file.

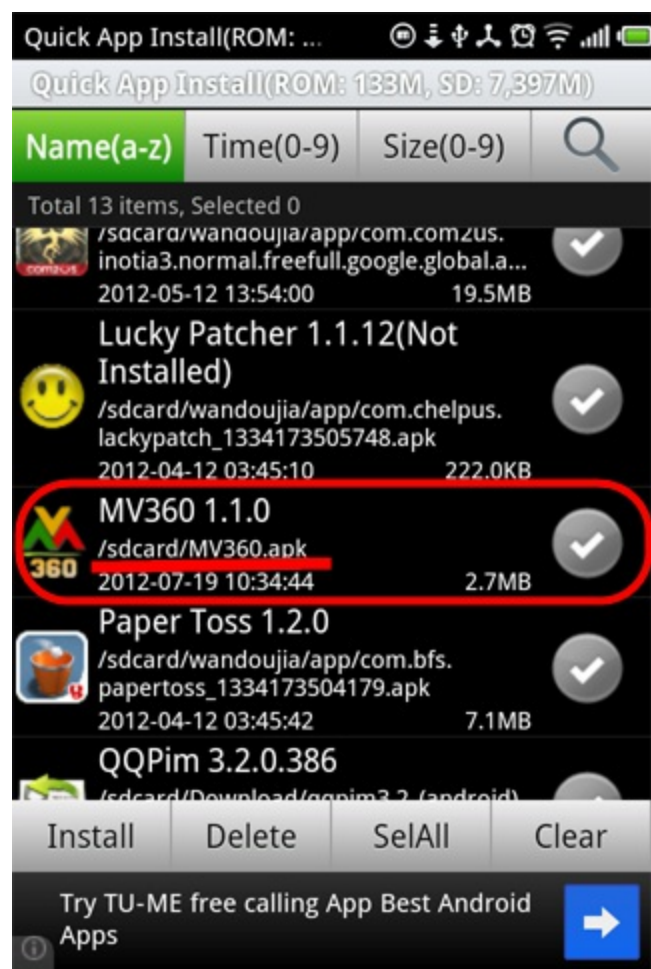
This time, we use the software "Quick App Install" to do it. If you don't have this tools, please download from the Google Android market and install it.





Attention: Before run the "Quick App Install" tools, please disconnect your Android mobile phone from PC.

Run the "Quick App Install" Tools, you will see below picture. You can find a list for MV360 1.0.0, the apk file is in the directory "/sdcard/MV360.apk"



Click this item to install the software, you will see below image and click the "Install" button to install this software.



The application you are installing will replace another application. All previous user data will be saved.

Allow this application to:

-  **Your personal information**  
read contact data
-  **Network communication**  
full Internet access
-  **Hardware controls**  
record audio, take pictures and videos
-  **System tools**  
prevent phone from sleeping

Back **Install**

Finally, you will see the file installation completed. You can click "Open" to run the software directly.



Application installed

Done

Open

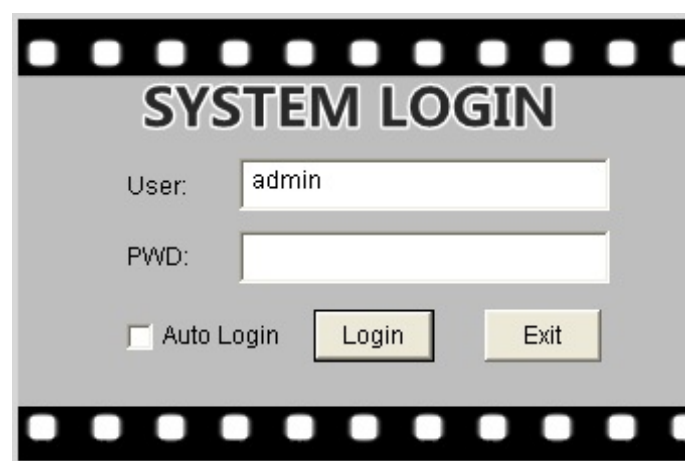
We will add the FAQ in future version. Thanks for choosing our products.

---

Copyright 2003-2012 Your company name (Edit the text to change this template.)

The default administrator user name : admin

Password is : empty



A screenshot of a web-based login form titled "SYSTEM LOGIN". The form has a grey background and is framed by a black border with white circular patterns at the top and bottom, resembling a film strip. It contains two input fields: "User:" with the text "admin" and "PWD:" which is empty. Below the fields are three buttons: a checkbox labeled "Auto Login", a "Login" button, and an "Exit" button.

Customer can change the password for "admin" in the "User management " form.

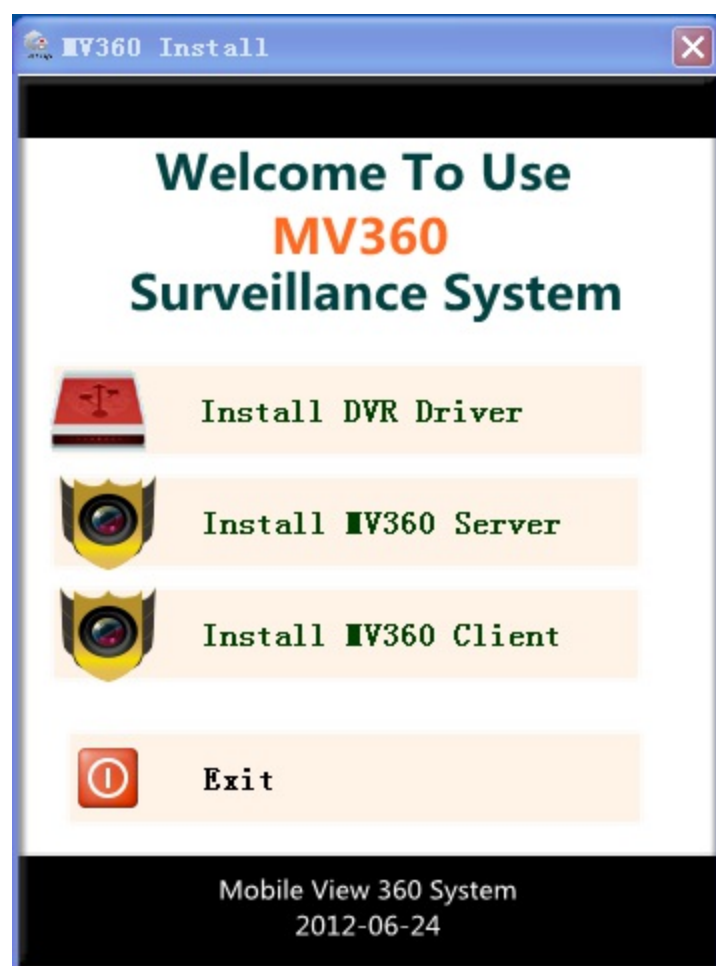
---

Copyright 2003-2012 Your company name (Edit the text to change this template.)

When we change our USB DVR from one USB port to another, the device can not work ?

Because the USB driver should be installed for each USB port before it can work properly. If we install the driver for one USB port and work properly, then we switch to another USB port, we should re-install the USB driver again to make the device work properly. If we do not re-install the driver for the new USB port, the MV360 software will show "can not find the device".

We can use the install wizard to install the USB driver easily. Just click the "Install DVR Driver" button to install the driver for the new USB port.



---

Copyright 2003-2012 Your company name (Edit the text to change this template.)