

AHD HVR User Manual

1 Turn on

1.1 Turn on

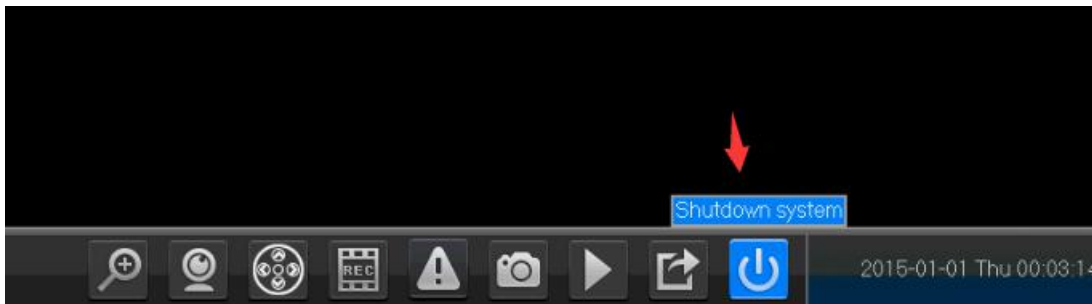
Plug the power supply, power supply indicator light will be on and you will hear “DI” sound, the DVR will turn on after self-test.

Note: pls use the enclosed power supply, in case DVR can't work normally or broke. For the power with switch, pls make sure it's close.

1.2 Shutdown

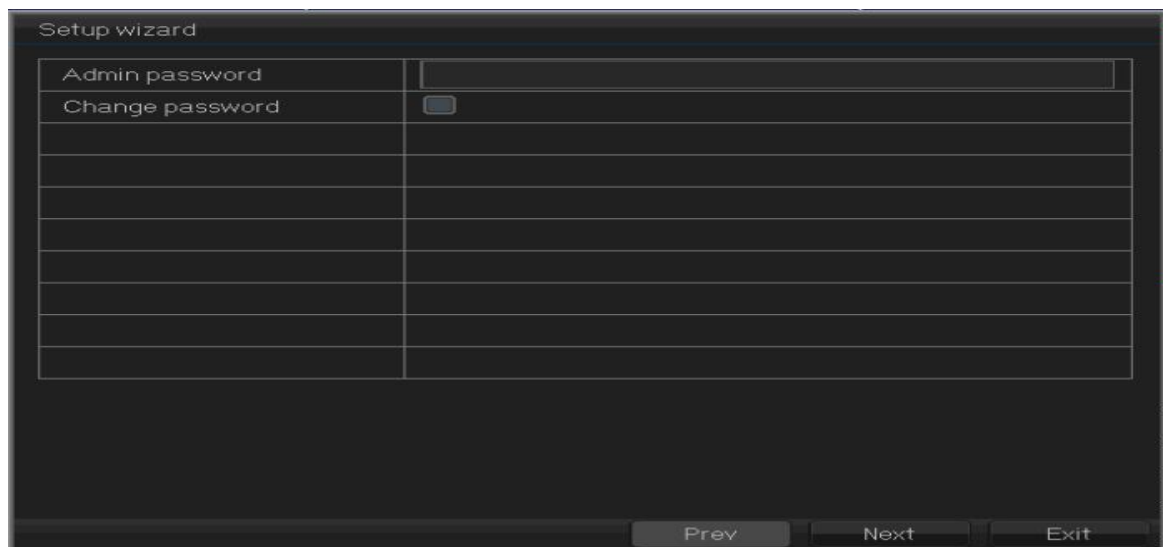
There are two methods to turn off the DVR. One is soft closedown: Right click to pop-up menu bar, Click the button marked by the red arrow in the following picture to shutdown the system; the other is hardware power off: plug off the power supply to shut down the device.

Note: Recovered after power off, If the device is shut off in improper way when it's in the working condition, after reboot, the record information before shut off will be saved and it will be back to the status before shutoff. Before you change the HDD, pls power off first.



2. Setup wizard

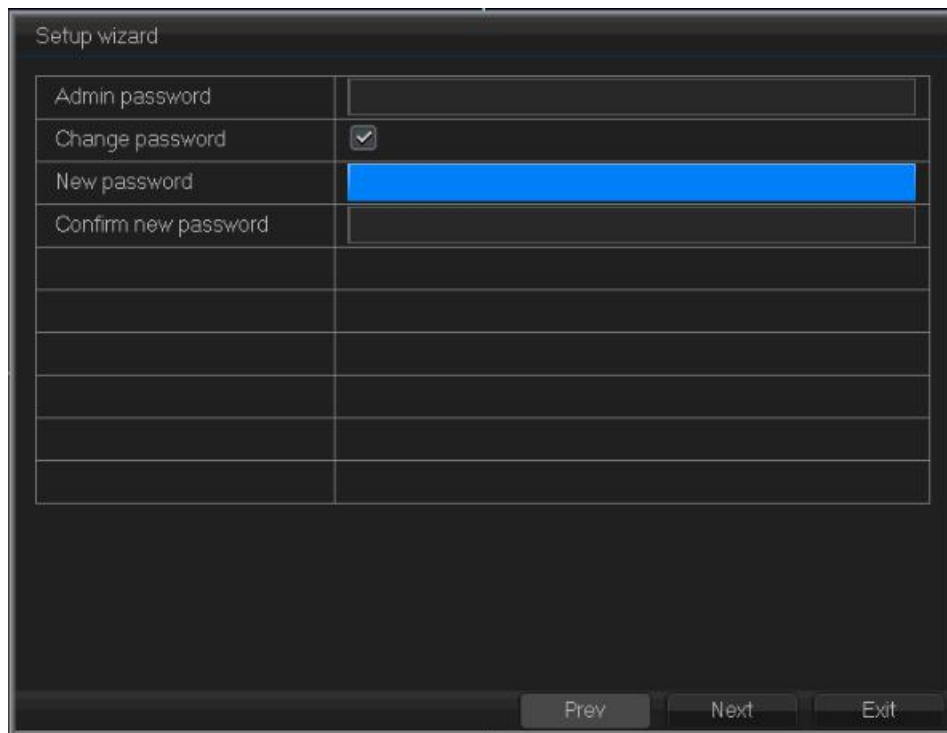
When the DVR boots up, the setup wizard will pop-up, for the first time, the user can follow the prompt message to configure.



3. Admin password setting:

After the device power on, pls set your password before operation and configuration, system will follow the corresponding commands according to the user authorization, there're 2 users as default, one is admin, and the other is guest. Password is Null for admin.

For your system security, please modify your password after first login, and in the future it won't have this prompt message again. After you set the password, pls enter the password to login



The image shows a 'Setup wizard' window with a dark background. It contains a table with four rows for password setup. The first row is 'Admin password' with an empty text box. The second row is 'Change password' with a checked checkbox. The third row is 'New password' with a blue highlighted text box. The fourth row is 'Confirm new password' with an empty text box. Below these are five more empty rows. At the bottom right are three buttons: 'Prev', 'Next', and 'Exit'.

Field	Value
Admin password	
Change password	<input checked="" type="checkbox"/>
New password	
Confirm new password	

Prev Next Exit

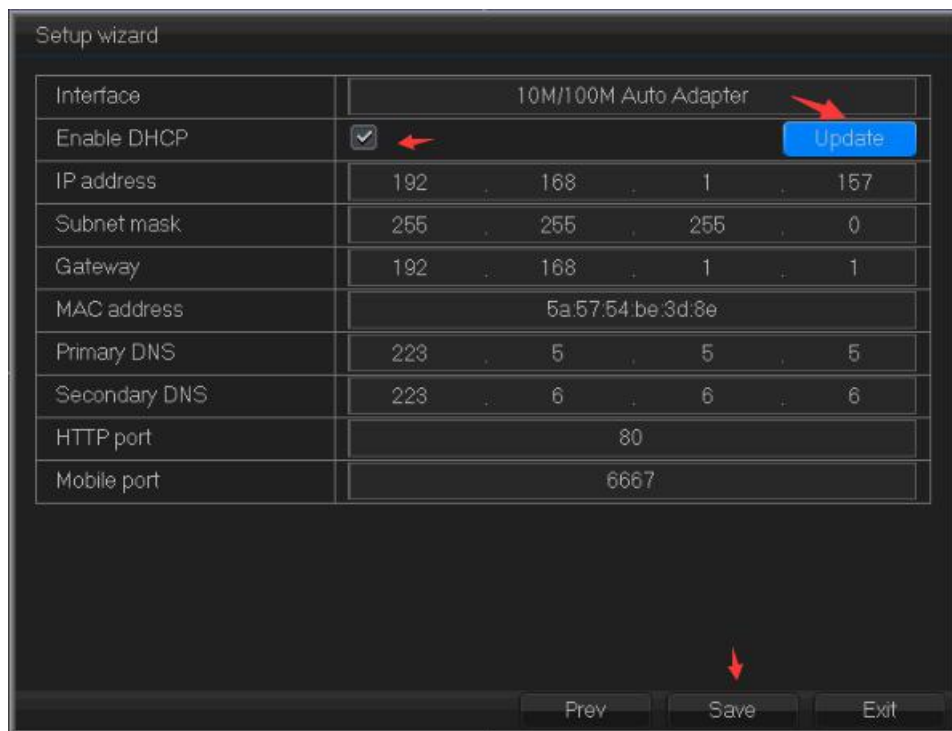
Click "Next" to enter P2P cloud service by scan the following QR.



Android, IOS: scan QR to download app.

SN: Find the Device ID

After that, click "Next", enter into the interface for configuring network.



【DHCP Enable】 Obtain IP address automatically.

【IP Address】 Default: 192.168.1.10

【Subnet Mask】 Default: 255.255.255.0

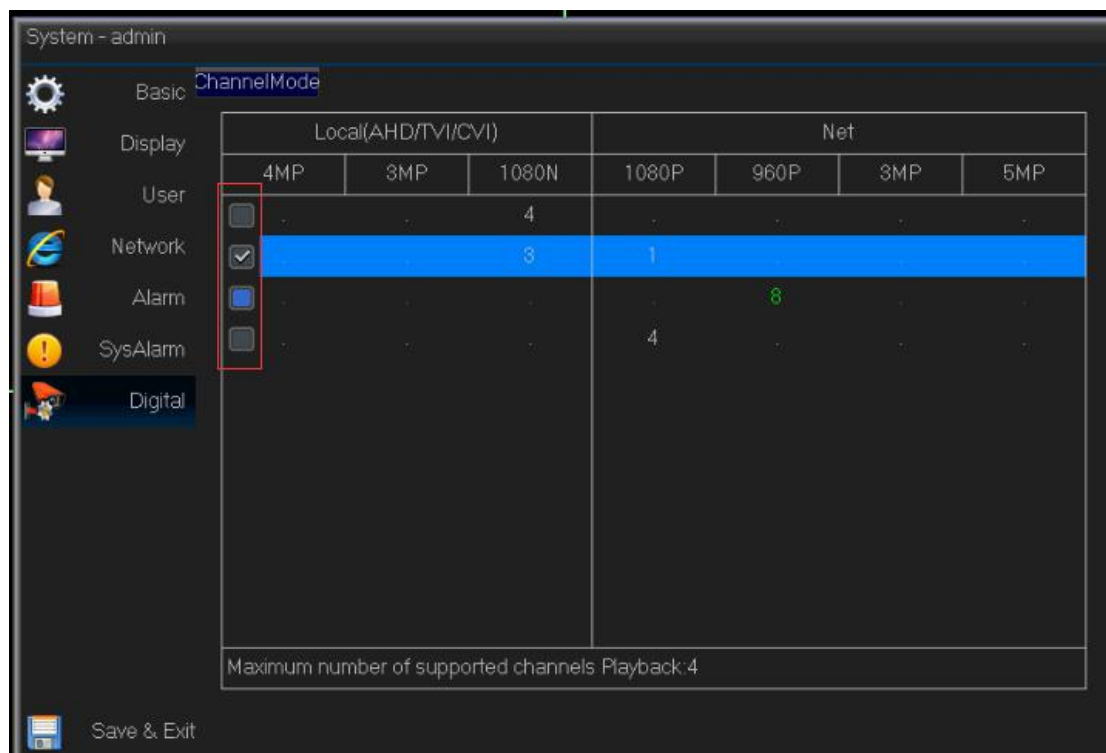
【Gateway】 Default: 192.168.1.1

If you want to make DVR connect with network, pls make the device's IP address is in the same

network segment with the router and it should conform to router's IP rules. It can't conflict with other devices IP in the LAN. Or you can also chose "DHCP Enable" to get an IP address automatically (router should have DHCP service). Click "Save" to finish the whole wizard configuration.

4. Channel mode


The chancel modes supported by the device can be viewed and configured via 【main menu】 > 【system configuration】> 【channel management】, there're several modes: Local (AHD/TVI/CVI): the number under the resolution is the channel numbers. You can choose the channel number according to your requirement. The right side is for IP (for example: 4+4= 4 channel analog channels (AHD/TVI/CVI/CVBS) + 4 channel IP).








Note: High resolution modes can be compatible with lower resolution cameras; lower resolutions can't be compatible with higher solutions cameras. For examples: analog channel 4*1080P can connect with 1080P cameras and also 720P cameras.

5. Coaxial control

Function: set AHD camera's configuration

Choose the channel with coaxial camera, and then right click main menu to choose  to get coaxial control menu.



Click **CH. Channel01** to enter into camera configuration interface. Use  or  to switch between the camera menu. Use  or  choose the specific parameters, and after switch to “exit”, click  to exit.

Coaxial control menu including: AF Zoom **+ -**; Focus **+ -**; Iris **+ -**; UTC control etc..

6. Encode

Go to **【main menu】 > 【Record】 > 【setup】**, Go to encode configuration interface



Main stream is used for local record, playback. Sub-stream is used for remote surveillance, such as: mobile surveillance. Dual stream technology can make playback and remote surveillance more smooth and clear.

Note: Different products have different encode resolution options. Both video and audio icon displayed means record files including video and audio.

7. Record

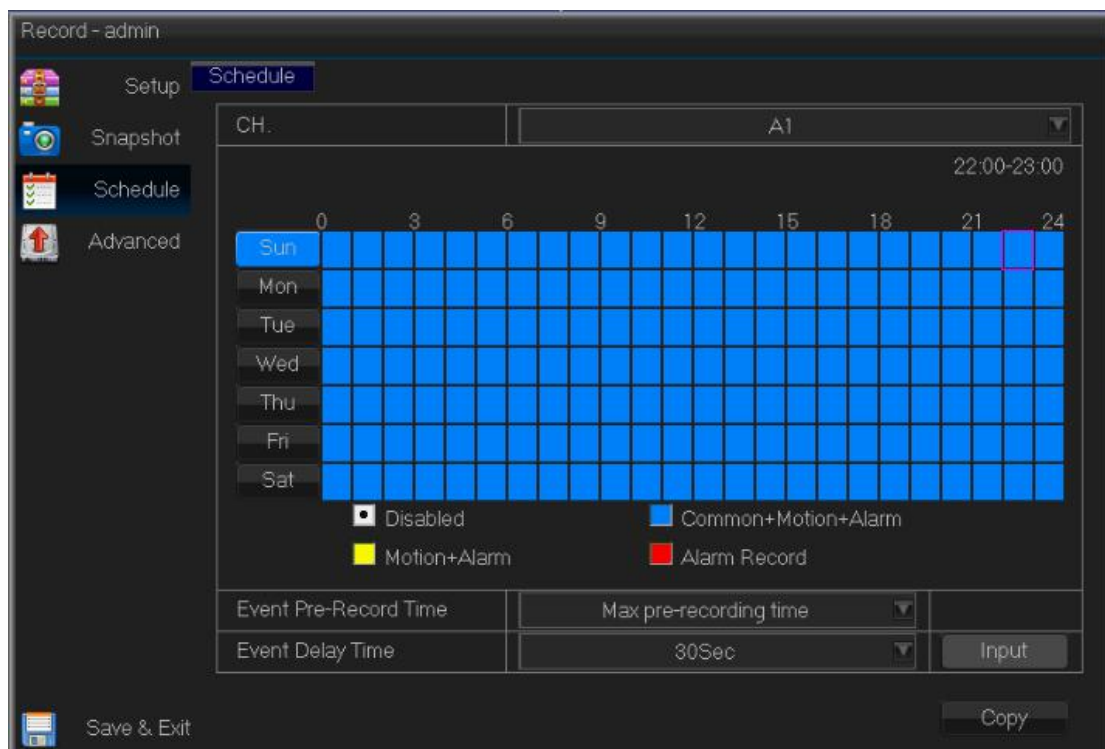
7.1 hard disk setting

Format when first log in By [main menu]>[HDD Manage]>[setup]. After formatting, pls set the hard disk as read-write hard disk via 【read-write hard disk setting】

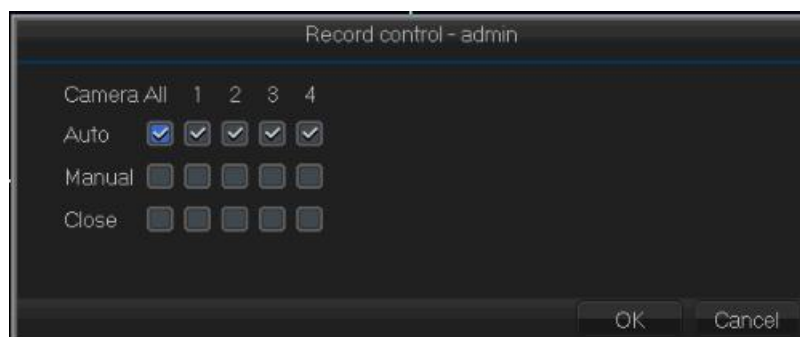
There is at least one read-write hard disk.


7.2 Record settings

Click [main menu]>[Record]>[Schedule] to set recording



[Channel] Choose the corresponding channel number to set the channel. Choose the all option to set the entire channels.



[Record Mode] Click  when preview to set video status, there're 3 status: Schedule, manual or stop.




Schedule: Record according to video type or time section.

Manual: After changing to manual, the corresponding channel will be recorded the whole day 24 hours.

Stop: The corresponding channel will stop recording.


After you choose the configuration mode, you can set the recording type and time section.

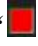
[Time section] The recording will start only in the set time range.

[Recording type] set recording type, there're 4 types: No record , Regular , detection ,

Alarm 

Regular: Regular recording is arranged in the setting time section. The video file type is “” .

Detect: Trigger the “motion detect”, “video mask” or “video loss” signal, when above alarm is set as opening recording, the “detection recording” state is on. The video file type is “”

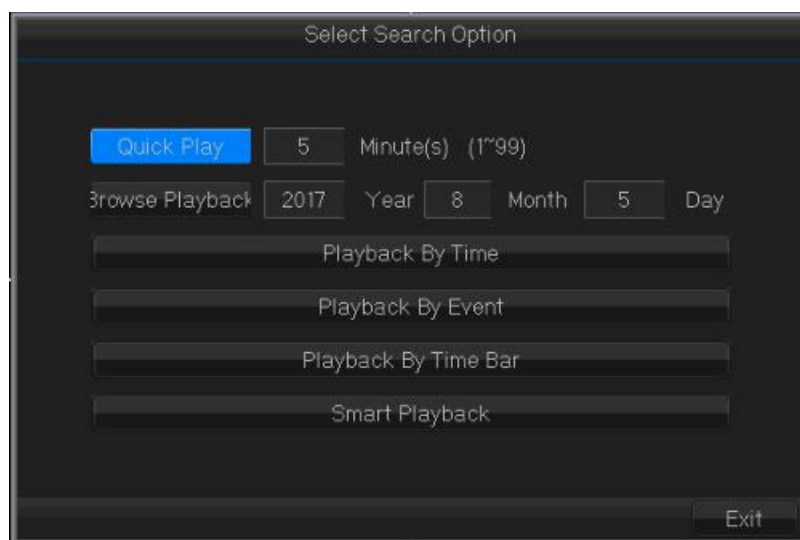
Alarm: Trigger the external alarm signal in the set time section, and the alarm is set as opening recording, the video file type is “” .

7.3 Record query and playback

Play the record video in the hard disk: right click menu to get “record playback”, choose



to playback.



Quick playback: Quick play the record in the corresponding time section

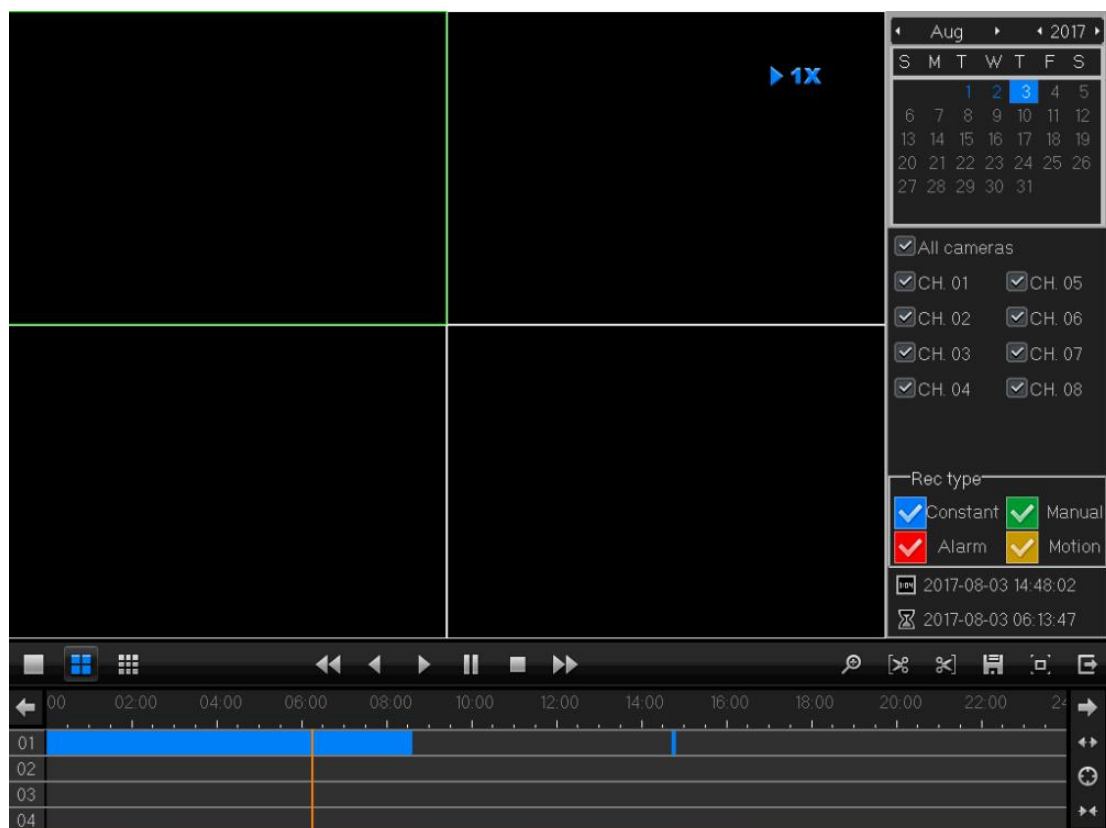
Browse playback: browse the corresponding record




Playback by time: It will show the earliest time and the latest time in the hard disk. You can playback quickly.

Playback by event: browse quickly, choose alarm/motion detection playback

Playback by time bar: Choose the date, and check the corresponding record in the time section. Multi-channel playback is supported.

Smart playback: choose the date, and skip the video you don't follow.



Record backup: Choose the storage location, Click  to cut  to finish cut. Click  to backup. Click detection (read-write or device backup) to choose recording time and channel. Under the channel, you can check the cut video file's size. Click start to check the time column. There will be tick after finishing backup.

Record playback: Double click the files in the list to playback, or playback by time in the time column.

Playback all channel: Before playback, pls choose all channel and then playback all the channels.

Zoom: Click playing video, drag mouse left to chosen the area, and then move mouse into the zoom +/- area, right click to exit zoom.

8. Alarm

Take motion detection as example

8.1 Alarm setting (main menu-channel configuration-motion detection)

The functions include: open/close, sensitivity, detection area, defense time, trigger mode.

8.2 Motion detection Linkage setting

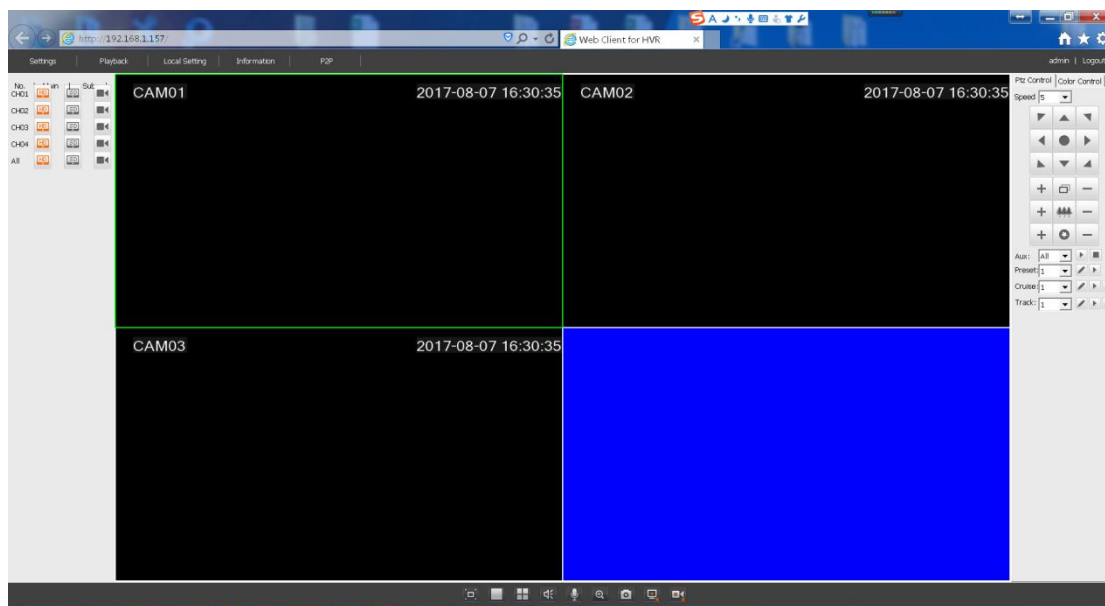
Include: (screen prompt, buzzer, trigger channel recording (need to set), snapshot, alarm output, trigger PTZ, and some Motion detection Linkage setup need combine with other function (such as linkage videos recording, send Email), that is how to deal with when it is generate an alarm. You can copy all the channel setting by chose (Copy) in the right button, and then save & exit-ok to exit.

9. LAN access

After network is connected, you can login IE browser for remote monitor.

10.1 Open IE browser, enter device IP in address bar. For example: default IP is 192.168.1.10, then enter <http://192.168.1.10> into the address bar to connect.

10.2 Enter user name and password, default user name is admin, no password. For safe reason, please modify the password. After log in successfully, it will pop up the monitoring interface as below.



Note: when first log in, you need install ActiveX, IE default stop the ActiveX, so please go to <internet option>---<safe>---<custom level>---<ActiveX>, and enable all ActiveX.

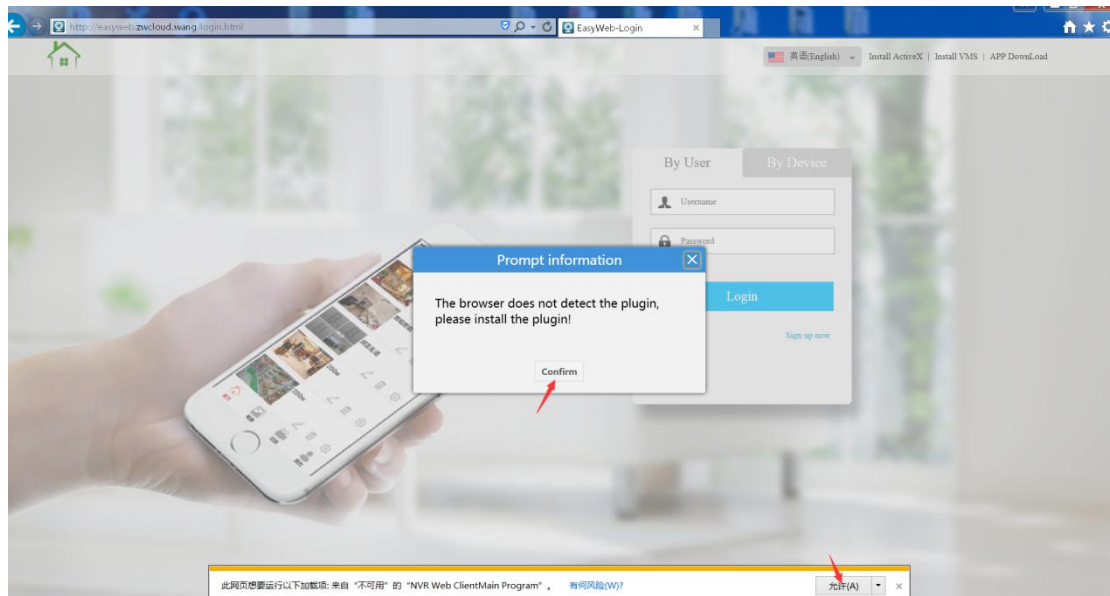
10. Public network access

Cloud technology makes access device in public network easily and conveniently.

10.1 Access by PC

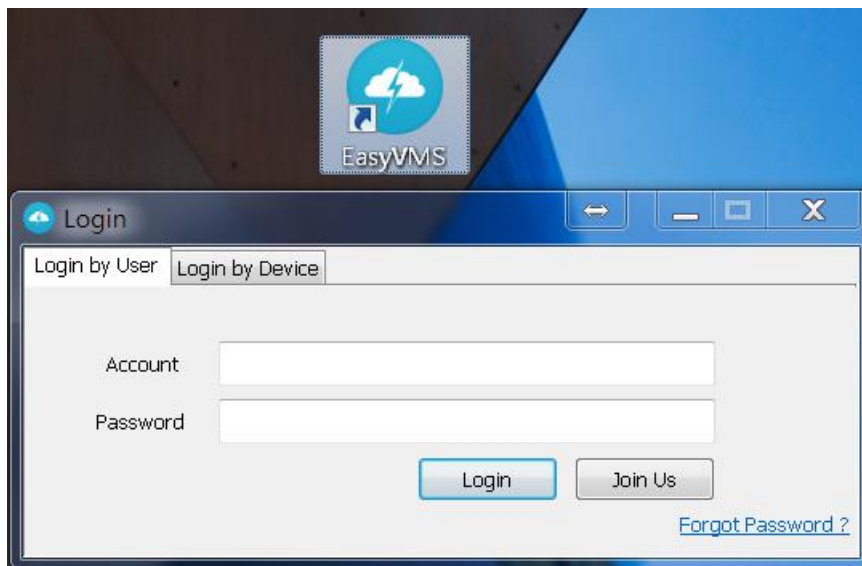
Open IE browser, enter into <http://easyweb.zwcloud.wang/login.html> to log in Cloud service

network website.



There're 2 login methods: login by user (App registered user) and login by device's UID. User can manage multiple devices simultaneously if you login by users. If you login by device's UID, you can only access one device.

10.2 EasyVMS, you can install EasyVMS on PC, use login account to use cloud service.



There're 2 login methods: login by user (App registered user) and login by device's UID. User can manage multiple devices simultaneously if you login by users. If you login by device's UID, you can only access one device.

10.3 Access by mobile

Network environment: WIFI, 3G, 4G

Terminal system : Android, IOS

APP: P2PViewCam / P6SPro

Downloading place: Google play, APP Store.

10.4 Download app locally (easiest way),

Enter main menu-system –network-P2P on the top right corner.



Scan to download App, after that, login by the account, and click “+” on top right corner and scan UID to get the preview.