

Megapixel IP Camera

Browse

Setting

System

Network

Camera

Video&Audio

PTZ Function

Alarm

Record

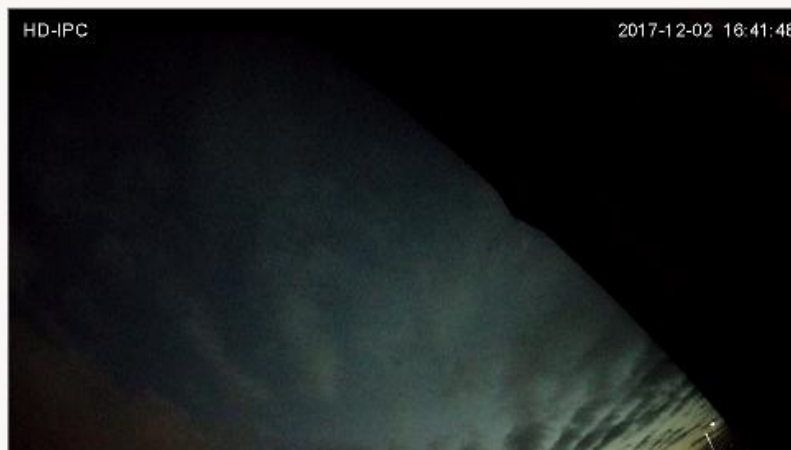
Manage Users

Log

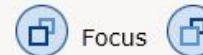
Preset

Auto tour

PTZ protocol



Iris



Focus



Zoom

Pan speed 6

Tilt speed 6

Tour No: 2

Action No: 0

Set

Call

Megapixel IP Camera

Browse

Setting

System

Network

Camera

Video&Audio

PTZ Function

Alarm

Record

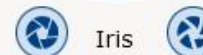
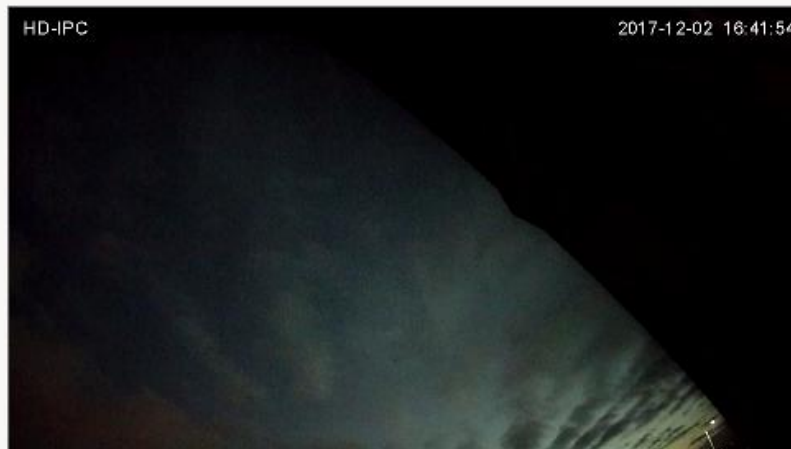
Manage Users

Log

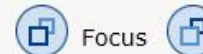
Preset

Auto tour

PTZ protocol



Iris



Focus



Zoom

Pan speed 6

Tilt speed 6

No.: 1

Title:

Set

Call

Delete



Zapisano zrzut ekranu

Dodano zrzut ekranu do usługi OneDrive.
OneDrive

Megapixel IP Camera

Browse

Setting

System

Network

Camera

Video&Audio

PTZ Function

Alarm

Record

Manage Users

Log

Alarm configuration

I/O Input 1:
Alarm out contact:
Alarm server 1 IP:
Alarm server 2 IP:
Alarm server 3 IP:

Save

Alarm out relay

	I/O out 1	Mail	SD card	FTP	TCP	Select all
I/O Input 1	<input type="checkbox"/>	<input type="checkbox"/>	<input type="checkbox"/>	<input type="checkbox"/>	<input type="checkbox"/>	<input type="checkbox"/>
Motion area	<input type="checkbox"/>	<input type="checkbox"/>	<input type="checkbox"/>	<input type="checkbox"/>	<input type="checkbox"/>	<input type="checkbox"/>

Save

Alarm schedule

	Start time	End time
<input type="checkbox"/> Sun.	<input type="text" value="00 : 00"/>	<input type="text" value="23 : 59"/>
<input type="checkbox"/> Mon.	<input type="text" value="00 : 00"/>	<input type="text" value="23 : 59"/>
<input type="checkbox"/> Tue.	<input type="text" value="00 : 00"/>	<input type="text" value="23 : 59"/>
<input type="checkbox"/> Wed.	<input type="text" value="00 : 00"/>	<input type="text" value="23 : 59"/>
<input type="checkbox"/> Thu.	<input type="text" value="00 : 00"/>	<input type="text" value="23 : 59"/>
<input type="checkbox"/> Fri.	<input type="text" value="00 : 00"/>	<input type="text" value="23 : 59"/>
<input type="checkbox"/> Sat.	<input type="text" value="00 : 00"/>	<input type="text" value="23 : 59"/>
<input checked="" type="checkbox"/> Everyday	<input type="text" value="00 : 00"/>	<input type="text" value="23 : 59"/>

Save

Megapixel IP Camera

Browse

Setting

System

Network

Camera

Video&Audio

PTZ Function

Alarm

Record

Manage Users

Log

Settings

Playback

Recording Control

When SD card is full:

Overwrite

Stop

Manual recording control:

Start

Stop

Auto-record when network is abnormal:

Start

Stop

Recording StreamType:

Major

Minor

Save

Peripheral equipment management

SD Card status: State: Disconnected write-protect: Off
Occupied space: 0KB Total size: 0KB

SD card operation: [Mount](#)

[Format](#)

Megapixel IP Camera

Browse

Setting

System

Network

Camera

Video&Audio

PTZ Function

Alarm

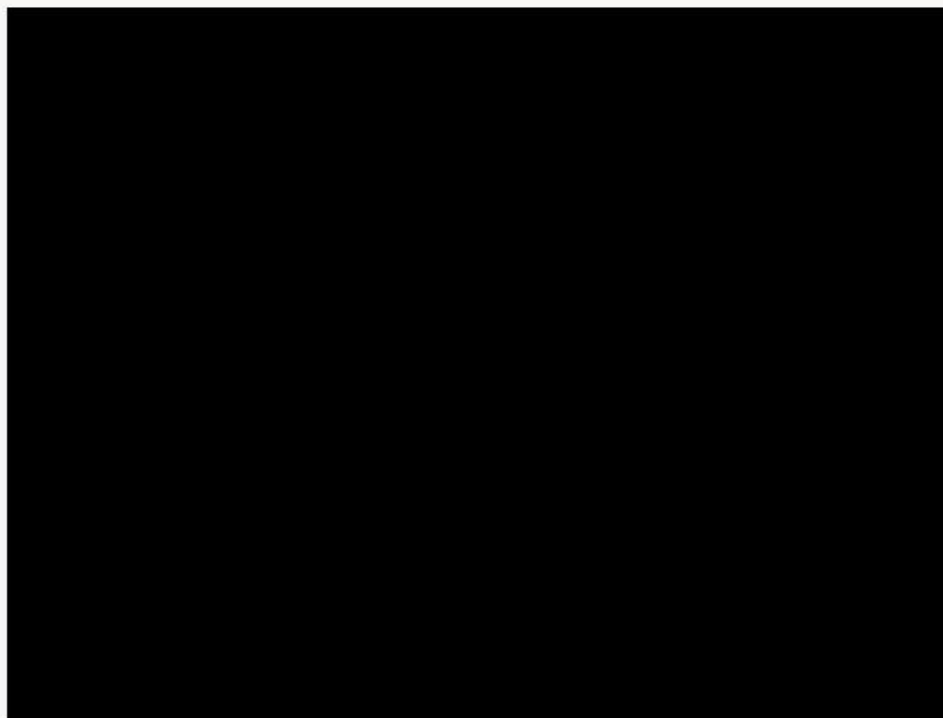
Record

Manage Users

Log

Settings

Playback



2017-12-01 16:43:19

2017-12-02 16:43:19

Search



Download



Megapixel IP Camera

Browse

Setting

System

Network

Camera

Video&Audio

PTZ Function



Alarm

Record

Manage Users

Log

Add user 

Num	User name	Property	Operation
1	admin		

Megapixel IP Camera

Browse

Setting

System

Network

Camera

Video&Audio

PTZ Function

Alarm

Record

Manage Users

Log

User name:

Password:

Confirm password:

OK

Cancel



Zapisano zrzut ekranu

Dodano zrzut ekranu do usługi
OneDrive.
OneDrive

Megapixel IP Camera

Browse

Setting

System

Network

Camera

Video&Audio

PTZ Function

Alarm

Record

Manage Users

Log

Date	Time	Log
2017 - 10 - 18	02 : 00 : 28	app: change timezone to +01:00
2017 - 10 - 18	08 : 44 : 28	app: Net up!!
2017 - 10 - 18	08 : 21 : 41	app: Net down!!



Page 1 of 1



Goto



Delete logs

Zapisano zrzut ekranu

Dodano zrzut ekranu do usługi
OneDrive.
OneDrive

Megapixel IP Camera

Browse

Setting



view

- Stream type: Main stream
- Video size: Auto
- Play mode: Live
- Color mode: Fresh

PTZ control



- PanSpeed: 6
- TiltSpeed: 6
- FocusSpeed: Fast
- ZoomSpeed: Fast

PTZ function

HD-IPC

2017-12-02 16:44:00



Megapixel IP Camera

Browse

Setting



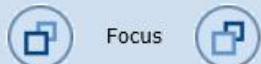
English

Color mode Fresh

PTZ control



Iris



Focus



Zoom

PanSpeed 6

TiltSpeed 6

FocusSpeed Fast

ZoomSpeed Fast

PTZ function

Preset 1 Set Mov Call

Tour 1 Call

Auto-pan

HD-IPC

2017-12-02 16:44:04



Zapisano zrzut ekranu

Dodano zrzut ekranu do usługi OneDrive.

OneDrive

Megapixel IP Camera

Browse

Setting

Control icons: Zoom in (+), Camera, Video recording, Microphone, Mute, Language: English

View

- Stream type: Main stream
- Video size: Auto
- Play mode: Live
- Color mode: Fresh

PTZ control



Iris, Focus, Zoom

- PanSpeed: 6
- TiltSpeed: 6

HD-IPC

2017-12-02 16:36:10



Megapixel IP Camera

Browse

Setting

System

Network

Camera

Video&Audio

PTZ Function

Alarm

Record

Manage Users

Log

System Time Advanced

Basic information

Version:	V1.04.10-170701	Time zone:	GMT+01:00
Product info:	IPD-E14T08 series	SerialNum:	071D3E1F8327

Network settings

MAC address:	00-2A-2A-12-80-2A	IP address:	192.168.0.200
Default gateway:	192.168.0.1	Subnet mask:	255.255.255.0

Alarm settings

Alarm server 1 IP:	0.0.0.0
Alarm server 2 IP:	0.0.0.0
Alarm server 3 IP:	0.0.0.0

NTP settings

NTP server :	192.168.1.100
--------------	---------------

video settings

Public video parameters:

Brightness:	128	Contrast:	128
Saturation:	128	Sharpness:	128

Main stream parameters:

Resolution:	1920x1080	Frame rate:	15
Bit rate:	VBR(upper limit: 3072Kbps)	I/P rate:	30

Sub stream parameters:

Resolution:	640x480	Frame rate:	15
Bit rate:	VBR(upper limit: 1024Kbps)	I/P rate:	30

Megapixel IP Camera

Browse

Setting

System

Network

Camera

Video&Audio

PTZ Function

Alarm

Record

Manage Users

Log

System

Time

Advanced

Time zone

Time zone: (GMT+01:00) Amsterdam, Berlin, Bern, Rome, Stockholm, Vienna, E ▼

Daylight saving time: On Off

Save

Cancel

NTP

On Off

NTP server : 192.168.1.100

Sync time: 23 : 59 : 00

Sync interval(hours): 24 ▼

Save

Cancel

Sync now

Device time: 2017-12-02 16:37:35

Local PC time: 2017-12-02 16:37:36

NTP

PC

Megapixel IP Camera

Browse

Setting

System

Network

Camera

Video&Audio

PTZ Function

Alarm

Record

Manage Users

Log

System

Time

Advanced

Firmware upgrade

Przeglądaj... (Please choose upgrade file.)

Keep current config unchanged:

Submit

Factory settings

Press the button to reset all the parameters to the factory default settings.

Keep current IP unchanged:

Reset

Reboot

Press the button to reboot the system, the window will reload after it.

Reboot

Megapixel IP Camera

Browse

Setting

System

Network

FTP

SMTP

QoS

IGMP

PORT

DDNS

CloudLens

Network

Network

Camera

Video&Audio

PTZ Function

Alarm

Record

Manage Users

Log

DHCP: On Off

IP address:

Subnet mask:

Default gateway:

Primary DNS server:

Secondary DNS server:

Save

Cancel

Megapixel IP Camera

Browse

Setting

System

Network

Camera

Video&Audio

PTZ Function

Alarm

Record

Manage Users

Log

Network

FTP

SMTP

QoS

IGMP

PORT

DDNS

CloudLens

FTP

Server :

Port : (1-65535)

User name:

Password:

Server Path :

FileName :

Snap Number :

Snap Interval : s

Save

Cancel

Megapixel IP Camera

Browse

Setting

System

Network

Camera

Video&Audio

PTZ Function

Alarm

Record

Manage Users

Log

Network

FTP

SMTP

QoS

IGMP

PORT

DDNS

CloudLens

SMTP

Server :

Port :

SSL: On Off

SSL Port:

From:

To:

CC:

Authentication: On Off

User name:

Password:

SnapShot:

Save

Cancel

Megapixel IP Camera

Browse

Setting

System

Network

Camera

Video&Audio

PTZ Function

Alarm

Record

Manage Users

Log

Network

FTP

SMTP

QoS

IGMP

PORT

DDNS

CloudLens

QoS

QoS option:

Normal service ▼

Save

Cancel

Megapixel IP Camera

Browse

Setting

System

Network

Camera

Video&Audio

PTZ Function

Alarm

Record

Manage Users

Log

Network

FTP

SMTP

QoS

IGMP

PORT

DDNS

CloudLens

IGMP

Stream type:

Main Stream

State:

On Off

MultiCast IP address:

224.0.1.88

RTP port:

8888

Save

Cancel



Zapisa

Dodane

OneDrive

OneDrive

Megapixel IP Camera

Browse

Setting

System

Network

Camera

Video&Audio

PTZ Function

Alarm

Record

Manage Users

Log

Network

FTP

SMTP

QoS

IGMP

PORT

DDNS

CloudLens

PORT

RTSP Port:

Onvif Port:

Http Port:

Video Port:

Record Port:

Save

Notes: Settings are invalid while the ports are repeat!
Please reboot the device and refresh the page after changing the ports.

Megapixel IP Camera

Browse

Setting

System

Network

Camera

Video&Audio

PTZ Function

Alarm

Record

Manage Users

Log

Network

FTP

SMTP

QoS

IGMP

PORT

DDNS

CloudLens

DDNS

DDNS Status:

On Off

Method:

CamAnywhere

Server Address:

QDNS

DYNDNS

NO-IP

Server Port:

UserName:

ipcamera2014

Password:

••••••••

Domain:

ipcamera2014.xicp.net

Save

Megapixel IP Camera

Browse

Setting

System

Network

Camera

Video&Audio

PTZ Function

Alarm

Record

Manage Users

Log

Network

FTP

SMTP

QoS

IGMP

PORT

DDNS

CloudLens

CloudLens

P2P:

ON OFF

ID:

HK0000071D3E1F8327Kf

Reset:

Reset



Megapixel IP Camera

Browse

Setting

System

Network

Camera

Video&Audio

PTZ Function

Alarm

Record

Manage Users

Log

Basic settings

Exposure settings

Effect settings

White balance

Reset



FlickerFrequency: 50Hz 60Hz

CVBS Output: PAL

Vertical Mirror: On Off

Horizontal Mirror: On Off

Back Light: On Off

Digital WDR: On Off

WDR Level: 85

AntiFalse Color: On Off

AntiFog: On Off

Dig-ImgStabilize: On Off

LensShadeCorr: On Off

LensDistortCorr: On Off

LDCLevel: 0

Megapixel IP Camera

Browse

Setting

System

Network

Camera

Video&Audio

PTZ Function

Alarm

Record

Manage Users

Log

Basic settings

Exposure settings

Effect settings

White balance

Reset



Exposure mode:

IR mode:

Scene:

IR enable:

Slow Shutter:

Switch time:

AGC:

Color mode:

Shutter speed:

HiLightCompress:

Manual AGC:

ExposureTarget:

Megapixel IP Camera

Browse

Setting

System

Network

Camera

Video&Audio

PTZ Function

Alarm

Record

Manage Users

Log

Basic settings Exposure settings **Effect settings** White balance Reset



General Mode

Brightness: 128

Sharpness: 128

Hue: 128

Contrast: 128

Saturation: 128

3D denoise: 128

Gamma:

Megapixel IP Camera

Browse

Setting

System

Network

Camera

Video&Audio

PTZ Function

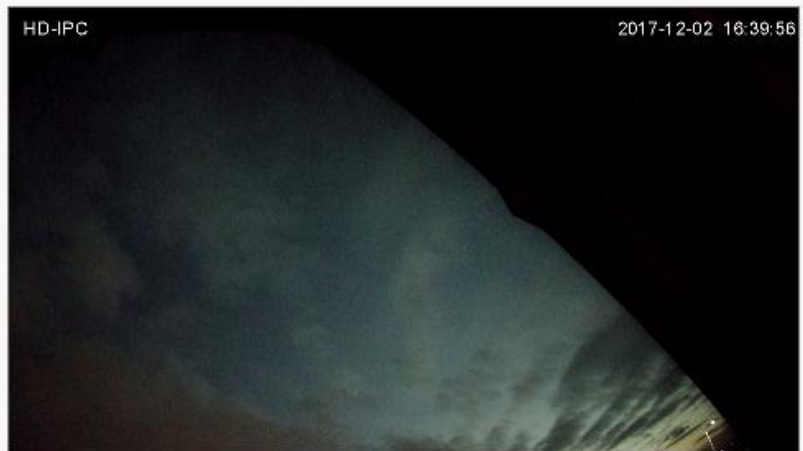
Alarm

Record

Manage Users

Log

Basic settings Exposure settings Effect settings White balance Reset



Mode:

Red gain:

Blue gain:

Megapixel IP Camera

Browse

Setting

System

Network

Camera

Video&Audio

PTZ Function

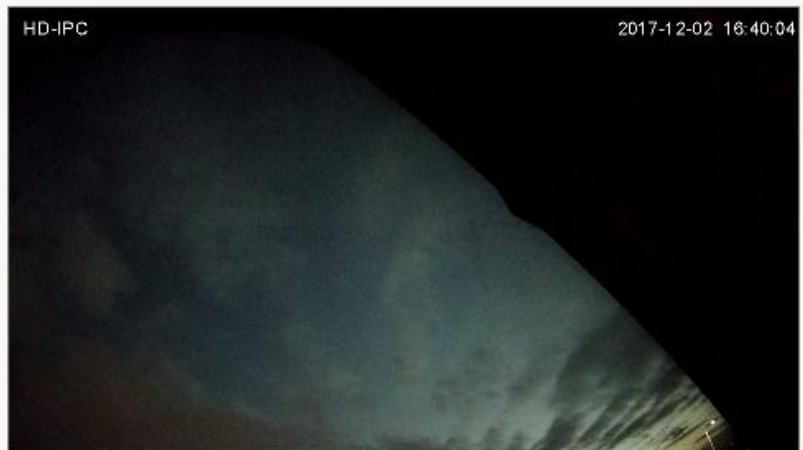
Alarm

Record

Manage Users

Log

Basic settings Exposure settings Effect settings White balance Reset



Reset

Megapixel IP Camera

Browse

Setting

System

Network

Camera

Video&Audio

PTZ Function

Alarm

Record

Manage Users

Log

Video

Character display

Motion detection

Privacy mask

ROI

Path

Audio



Main stream

Sub stream

MJPEG

Resolution: 1920x1080
Frame rate: 25
I/P rate: 30
BitRate type: VBR
Image quality: Average
BitRate: 3072 Kbps
(128~5120)

Save

Resolution: 640x480
Frame rate: 15
I/P rate: 30
BitRate type: VBR
Image quality: Average
BitRate: 1024 Kbps
(32~2000)

Save

Resolution: 1280x720
Frame rate: 1
Image quality: Average

Save

Megapixel IP Camera

Browse

Setting

System

Network

Camera

Video&Audio

PTZ Function

Alarm

Record

Manage Users

Log

Video

Character display

Motion detection

Privacy mask

ROI

Path

Audio



Text 1: On Off X/Y(0-99):

Font size: ▼

Content: Total:36.Remain:30.

Text 2: On Off X/Y(0-99):

Font size: ▼

Content: Total:36.Remain:36.

Text 3: On Off X/Y(0-99):

Font size: ▼

Content: Total:36.Remain:36.

Text 4: On Off X/Y(0-99):

Megapixel IP Camera

Browse

Setting

System

Network

Camera

Video&Audio

PTZ Function

Alarm

Record

Manage Users

Log

Video

Character display

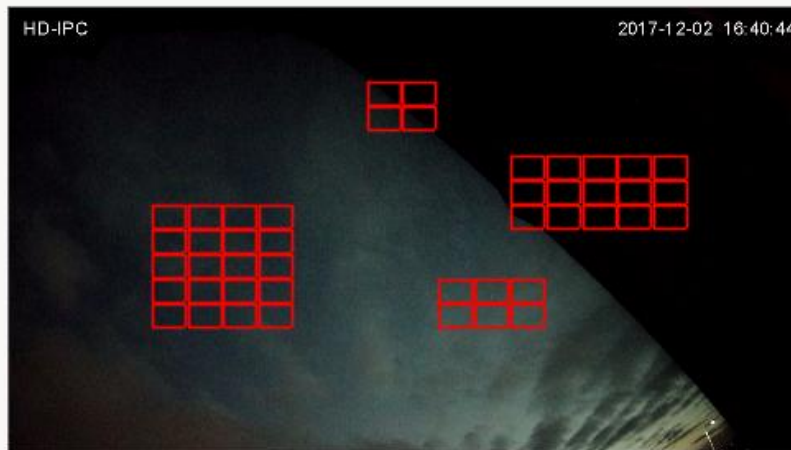
Motion detection

Privacy mask

ROI

Path

Audio



Drag scope

Clear all

sensitivity



(Most sensitive)

Enable motion detect

save

Megapixel IP Camera

Browse

Setting

System

Network

Camera

Video&Audio

PTZ Function

Alarm

Record

Manage Users

Log

Video

Character display

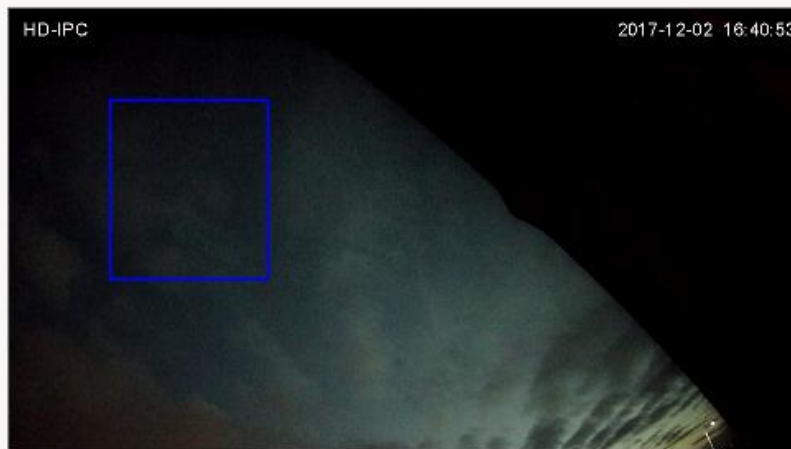
Motion detection

Privacy mask

ROI

Path

Audio



Zone 1: Name:

Zone 2: Name:

Zone 3: Name:

Zone 4: Name:

Megapixel IP Camera

Browse

Setting

System

Network

Camera

Video&Audio

PTZ Function

Alarm

Record

Manage Users

Log

Video

Character display

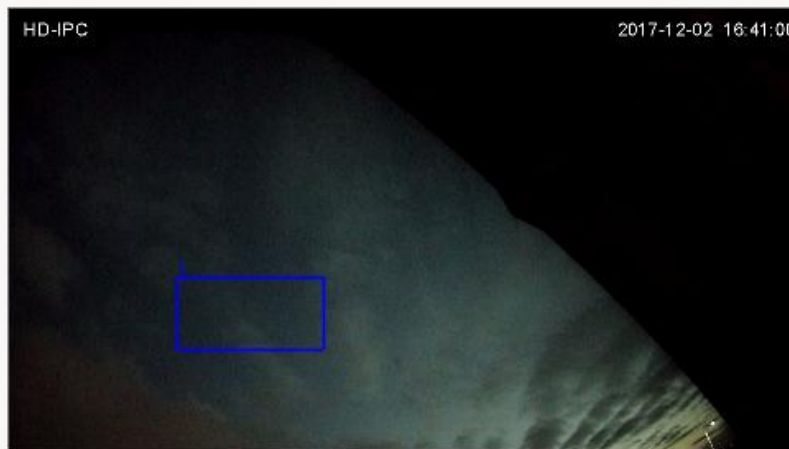
Motion detection

Privacy mask

ROI

Path

Audio



<input checked="" type="checkbox"/> Zone 1:	<input type="button" value="Draw"/>	Level:	<input type="text" value="Middle"/>	<input type="button" value="Save"/>	<input type="button" value="Cancel"/>
<input type="checkbox"/> Zone 2:	<input type="button" value="Draw"/>	Level:	<input type="text" value="Middle"/>	<input type="button" value="Save"/>	<input type="button" value="Cancel"/>
<input type="checkbox"/> Zone 3:	<input type="button" value="Draw"/>	Level:	<input type="text" value="Middle"/>	<input type="button" value="Save"/>	<input type="button" value="Cancel"/>
<input type="checkbox"/> Zone 4:	<input type="button" value="Draw"/>	Level:	<input type="text" value="Middle"/>	<input type="button" value="Save"/>	<input type="button" value="Cancel"/>



Zapisano zrzut ekranu

Dodano zrzut ekranu do usługi
OneDrive.
OneDrive

Megapixel IP Camera

Browse

Setting

System

Network

Camera

Video&Audio

PTZ Function

Alarm

Record

Manage Users

Log

Video

Character display

Motion detection

Privacy mask

ROI

Path

Audio



Photo saving path: [Browse...](#)

Format: ▾

Video saving path: [Browse...](#)

Format: ▾

Save

Megapixel IP Camera

Browse

Setting

System

Network

Camera

Video&Audio

PTZ Function

Alarm

Record

Manage Users

Log

Video

Character display

Motion detection

Privacy mask

ROI

Path

Audio



Switch:

SampleRate: 8K

Format:

InputVolume:

Note: Audio config will take effect after reboot.



Zapisano zrzut ekranu

Dodano zrzut ekranu do usługi

OneDrive.

OneDrive

Megapixel IP Camera

Browse

Setting

System

Network

Camera

Video&Audio

PTZ Function

Alarm

Record

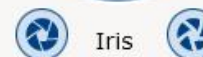
Manage Users

Log

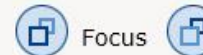
Preset

Auto tour

PTZ protocol



Iris



Focus



Zoom

Pan speed 6

Tilt speed 6

Address: 1

Protocol: Pelco-D

Baud rate: 2400

3D Protocol: Pelco-DH

User mode: HK-TST